

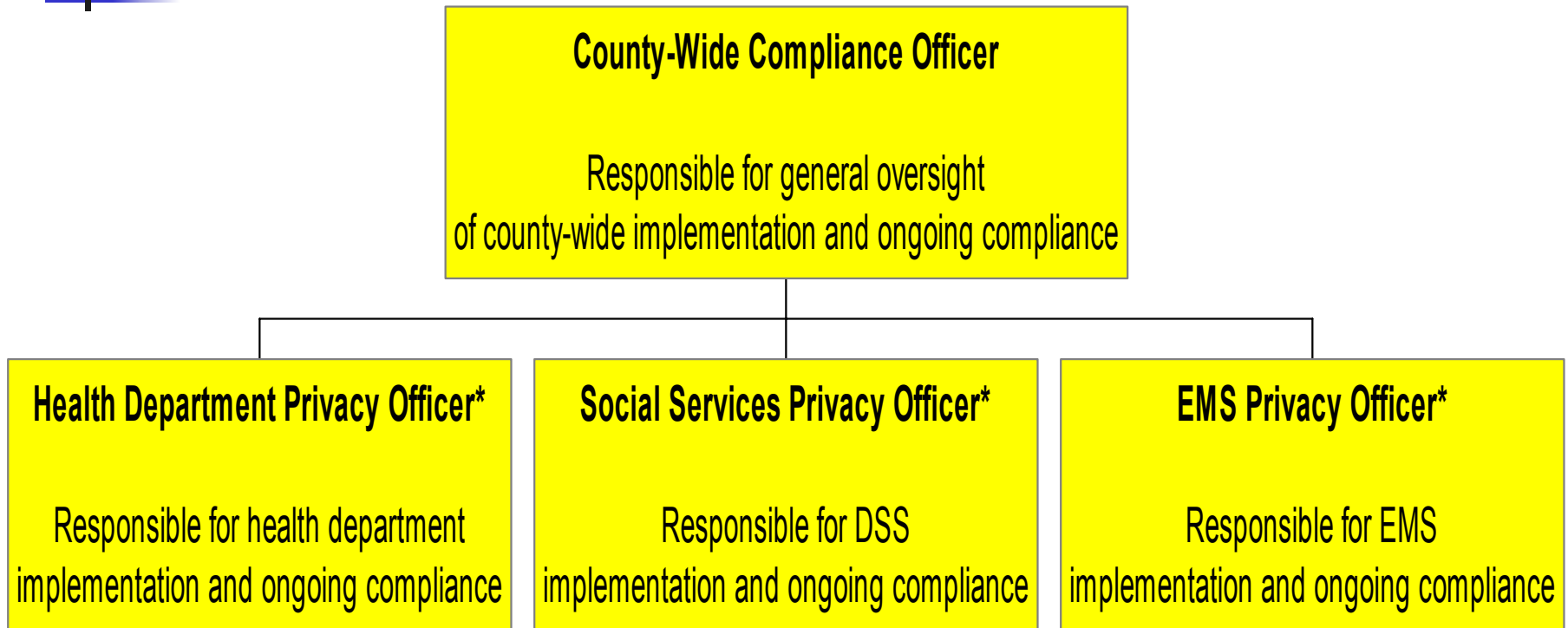
# Sample County Organizational Charts



---

HIPAA Medical Privacy Rule:  
Update for Public Agencies  
October 21, 2002

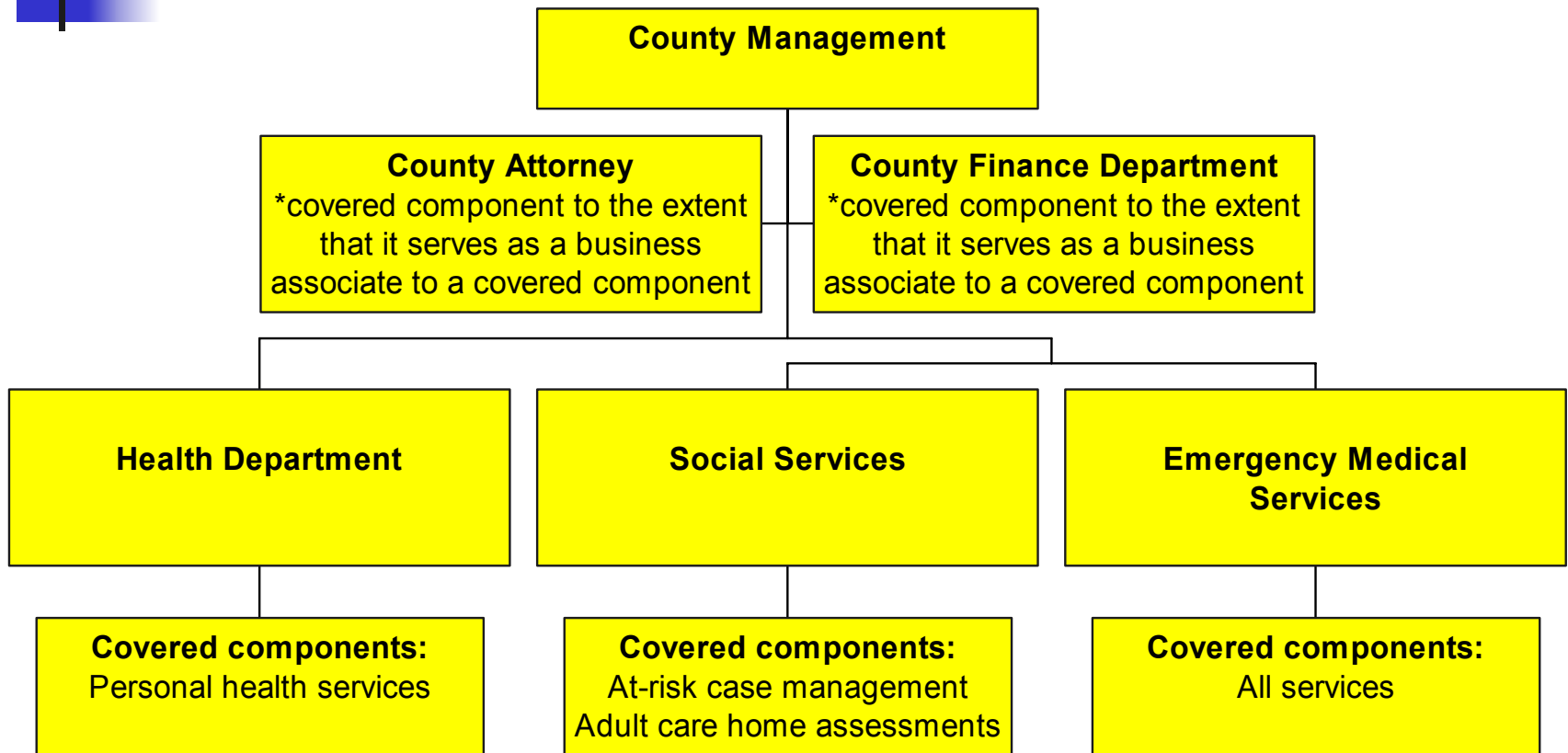
# Sample Compliance Responsibility†



† Please note that counties may have covered health care components other than those identified above (such as a health plan, jail health program, etc.)

\* Privacy officers are responsible for coordinating compliance with their internal business associates (such as county attorney and finance office)

# Sample County Hybrid Entity†



† Please note that counties may have covered health care components other than those identified above (such as a health plan, jail health program, etc.)