



CRISIS AND ASSESSMENT

Insight, Bridges, Western Area Multi-purpose Center

GOALS: PROTECT COMMUNITIES, RE-DIRECT LIVES, AND REDUCE RE-OFFENDING

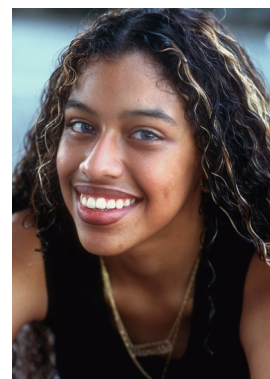
These centers provide short-term residential crisis intervention and assessment for youth known to the court system who are struggling in their communities. The centers provide a safe and supportive environment that produces a data-driven assessments and detailed recommendations for services that are actionable and easily understood by the youth, family, and court services.

- Left untreated, common risk factors such as mental illness, neglect, trauma, or substance abuse can lead to higher rates of recidivism and increased risk to communities.
- Centers seek the right service for the right youth in the right time frame to transform lives and protect communities

DESIGN A 14- to 30-day residential placement allows the centers' highly trained staff to assess each youth's strengths and areas of concern through:

- Psychometric testing
- Monitoring of daily functioning
- An evidence-based model of care using cognitive/behavioral techniques designed specifically for the juvenile population.

From data and observations, staff produce a comprehensive assessment report and an actionable Plan of Care for the family and court services staff.



- Capacity of 29
- Male and female
- Ages 10-17
- 14- to 30-day stay
- Evidence-based practices
- Psychometrics
- Detailed plan of care

ACCREDITATIONS

Methodist Home for Children holds both national and international accreditations:

COA and TFA



ASSESSMENT DATA

TESTING:

Primary Domains:

- Education
- Environment/social
- Intellectual functioning
- Personality

Specialized: (examples)

- Sexual behavior
- Substance abuse
- Trauma
- Pathology
- Criminogenic risk

OBSERVATION:

Daily Functioning:

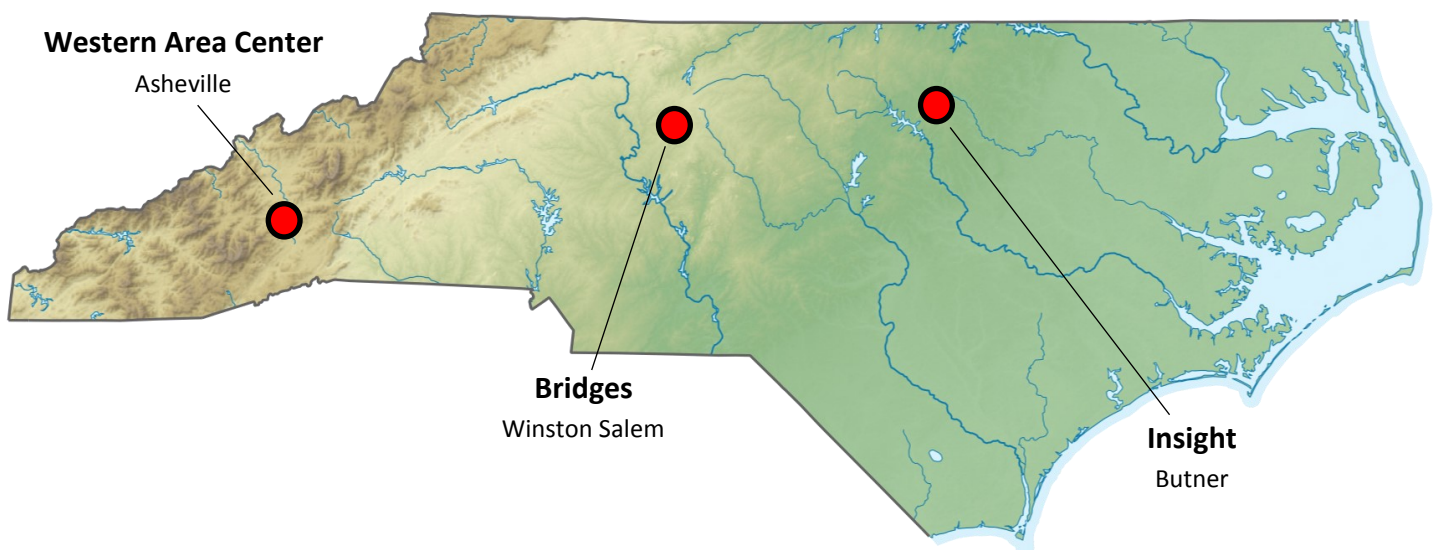
- School (academics & behavior)
- Meals
- Groups
- Recreation
- Talents—art, music, etc.
- Receiving reward
- Receiving consequence
- Social skill ability
- Learning ability
- Receptivity to treatment

STAFF

- Director of Operations
- Psychologist
- Licensed mental health professionals
- Assessment counselors
- Assessment managers
- Nursing staff
- Certified Teacher



LOCATION



A partnership between
The NC Department of Public Safety and
Methodist Home for Children