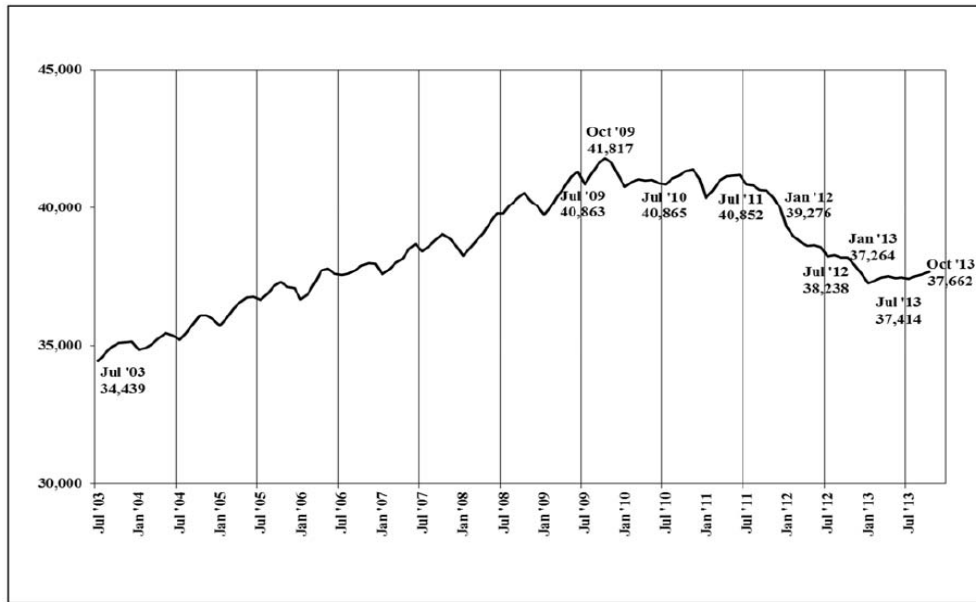


**PRISON POPULATION TRENDS: JULY 2003 – OCTOBER 2013
AVERAGE POPULATION BY MONTH**



NOTE: Vertical lines separate each fiscal year.

SOURCE: NC Department of Public Safety, Daily Unit Population (DUP) Reports and Inmates on Backlog Reports

Prison Population: October 31, 2013

37,697

Projected Prison Population

Projected Population: June 2014 36,967

Estimate of Expanded Operating Prison Capacity: 40,970

Projected Population: June 2022 37,680

Estimate of Expanded Operating Prison Capacity: 40,970

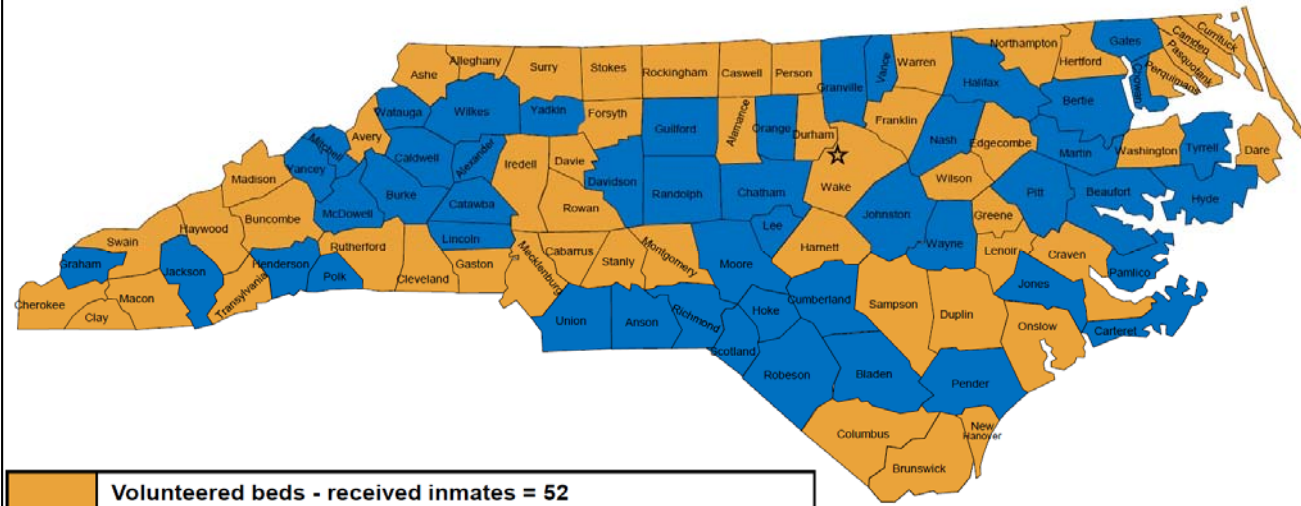
*Prison population figures include jail backlog, if any.

SOURCE:

NC Sentencing and Policy Advisory Commission, Prison Population Projections, February 2013

NC Department of Public Safety, Daily Unit Population (DUP) Reports and Inmate on Backlog Reports

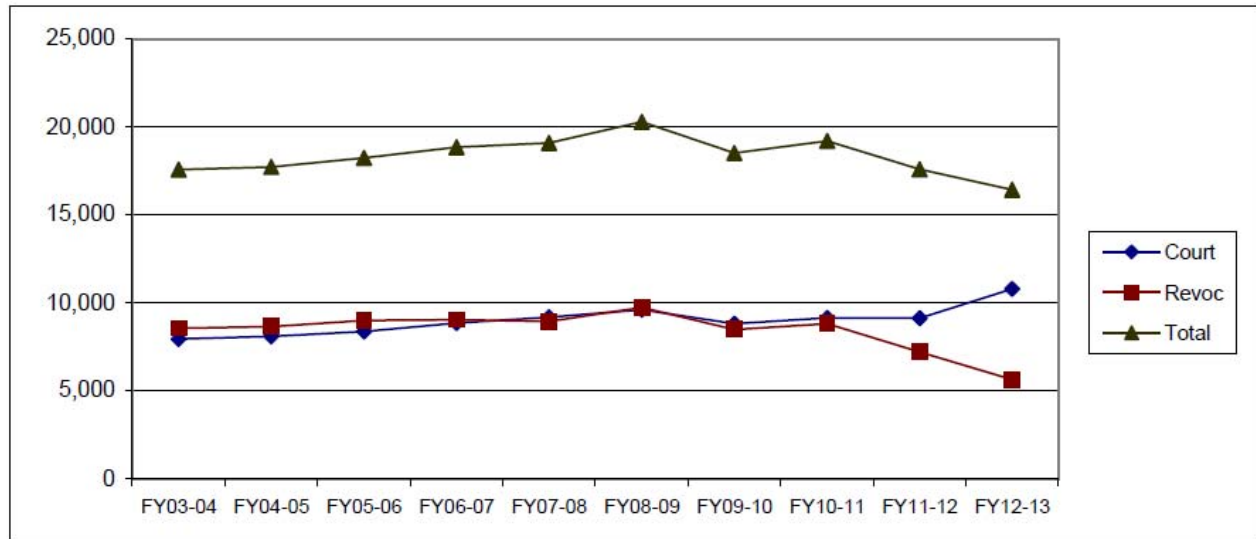
Counties that have Volunteered Beds to the Statewide Misdemeanant Confinement Program (SMCP)



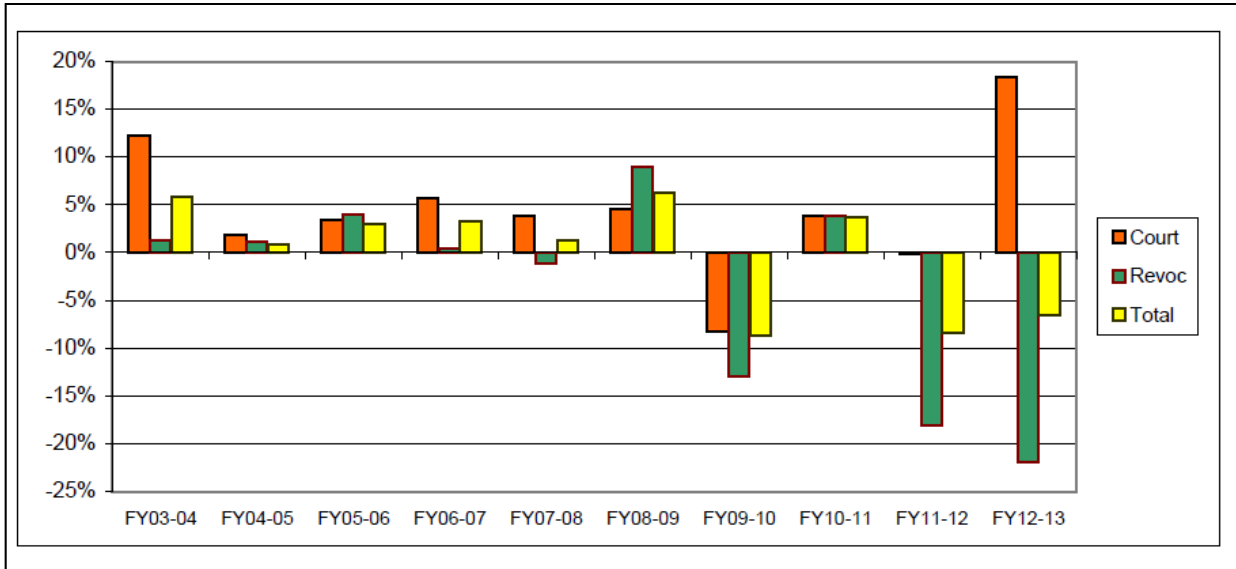
	Volunteered beds - received inmates = 52
	Not volunteered beds = 48

Misdemeanant Confinement Program	
Inmate Capacity:	1666
Approximate Daily Population:	690

Ten-year Trends for Felony Entries to Prison



Felony Entries			
	Court	Revoc	Total
FY03-04	7,954	8,562	17,567
FY04-05	8,096	8,653	17,722
FY05-06	8,369	8,998	18,241
FY06-07	8,845	9,039	18,847
FY07-08	9,187	8,936	19,091
FY08-09	9,605	9,740	20,281
FY09-10	8,809	8,480	18,506
FY10-11	9,142	8,805	19,194
FY11-12	9,128	7,206	17,584
FY12-13	10,798	5,629	16,427



Rate of Change for Felony Entries			
	Court	Revoc	Total
FY03-04	12.28%	1.28%	5.85%
FY04-05	1.79%	1.06%	0.88%
FY05-06	3.37%	3.99%	2.93%
FY06-07	5.69%	0.46%	3.32%
FY07-08	3.87%	-1.14%	1.29%
FY08-09	4.55%	9.00%	6.23%
FY09-10	-8.29%	-12.94%	-8.75%
FY10-11	3.78%	3.83%	3.72%
FY11-12	-0.15%	-18.16%	-8.39%
FY12-13	18.30%	-21.88%	-6.58%