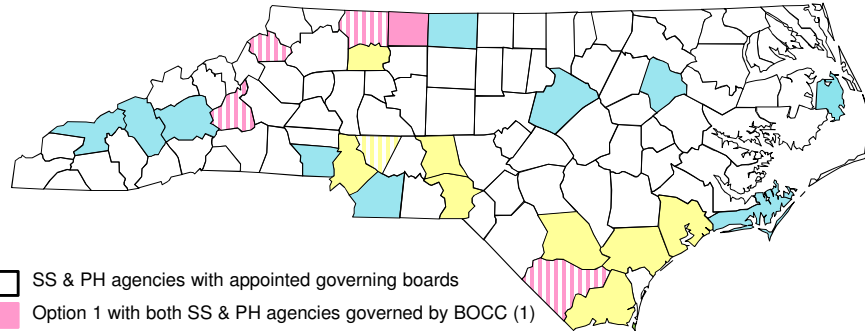
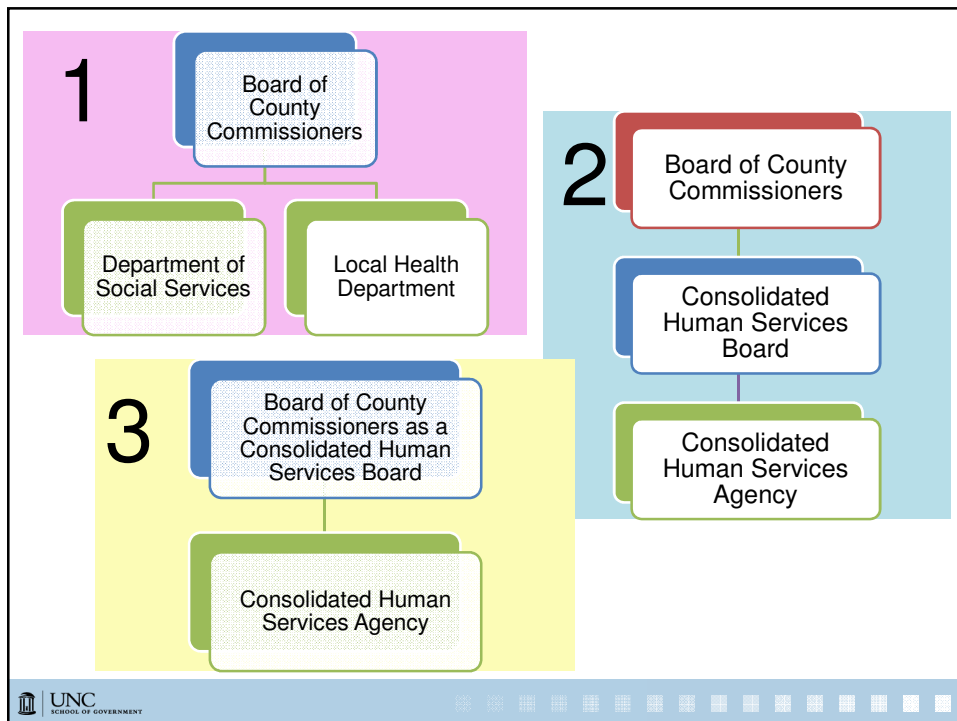


HS Organization and Governance

January 2015



- SS & PH agencies with appointed governing boards
 - Option 1 with both SS & PH agencies governed by BOCC (1)
 - Option 1 with SS agency governed by BOCC, PH agency with appointed governing board (4)
 - Option 2 with CHSA including SS & PH, appointed CHS board (10)
 - Option 3 with CHSA including SS & PH, governed by BOCC, health advisory committee (8)
 - Option 3 with CHSA including SS & other human services but not PH, governed by BOCC (1)
- * Other counties may have also changed. The changes above have been confirmed by SOG.



Key Differences

	Board	Hire Agency Director	HR
DSS	Appointed; 3-5 mem.	Board hires	SHRA
PH	Appointed; 11 mem.	Board hires	SHRA
One	Elected*	BOCC hires	SHRA
Two	Appointed; up to 25 mem.	Manager hires with advice & consent of CHS board	SHRA Optional
Three	Elected*	Manager hires with advice & consent of BOCC	SHRA optional

* If public health affected, must appoint health advisory committee

CHS Organizations Vary

