

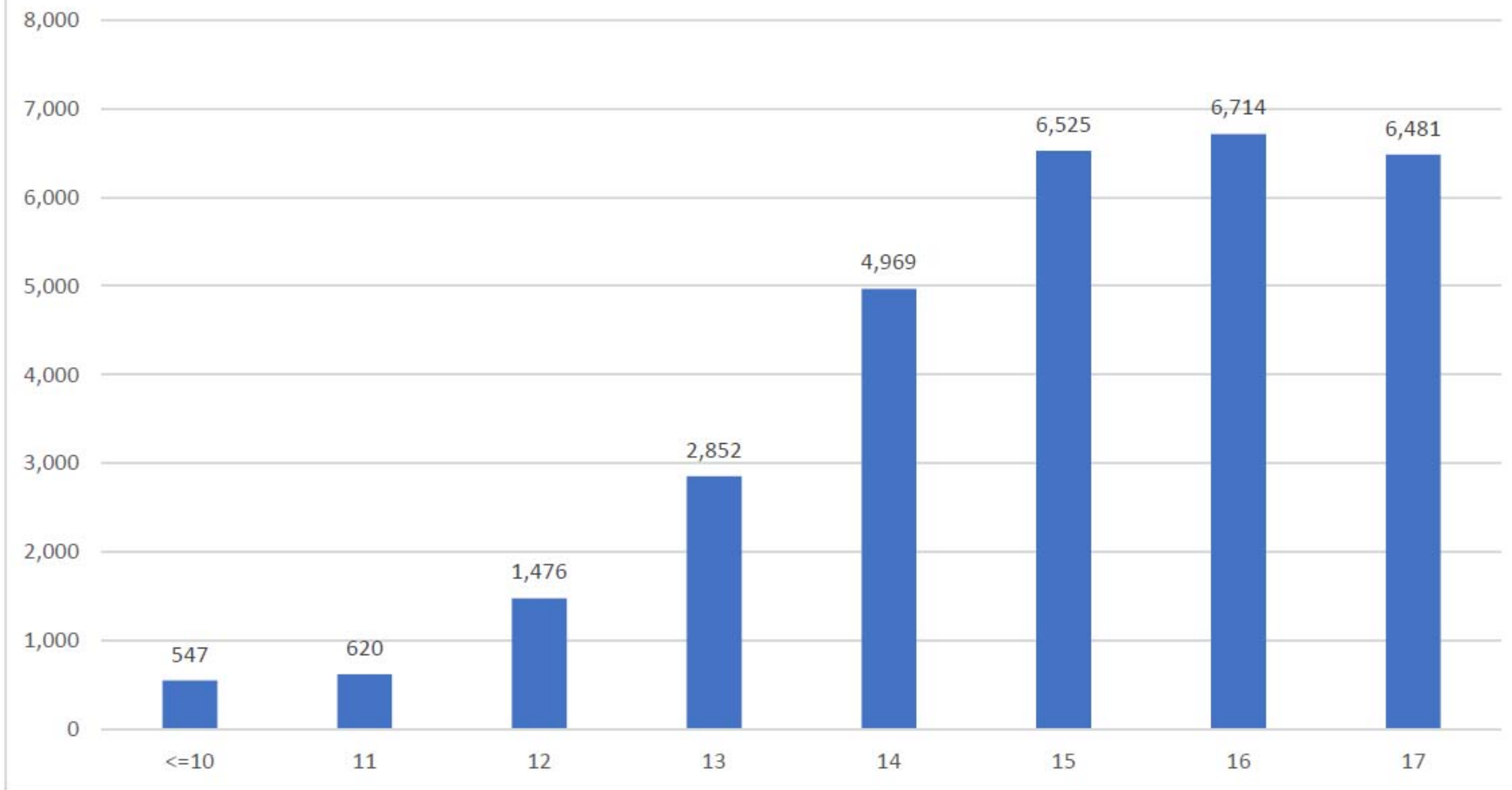


NORTH CAROLINA
DEPARTMENT OF PUBLIC SAFETY
PREVENT. PROTECT. PREPARE

Juvenile Justice: A Portrait of Our Youth

Kimberly L. Quintus, Juvenile Justice
Policy, Research, & Strategic Planning

Juvenile Complaints Received by Age CY 2020



Risk/Needs Assessments

RtA Youth- what sets these youth apart? There are 5 areas:

1. Higher % are **gang members/associates**
2. Higher % associate with **criminal/delinquent peers**
3. Significantly higher % with **substance abuse**
(61%, 33%, <1%)
4. Higher % need **mental health assessment/treatment**
5. Higher % are **runaways**

Almost half of juveniles across all ages had a household member that was currently incarcerated or had a record.



Sex

- ▶ Females make up:
 - 34% of youth served in a community program (at risk or court involved)
 - 19% of all complaints received
 - 17% of RtA complaints received
 - 17% of detention admissions
 - 6% of YDC Commitments
 - 100% of YDC females diagnosed with Disruptive/Conduct/Impulse Control Disorder
 - 100% of YDC females diagnosed with Trauma and Stress Related Disorder
 - 80% of YDC females diagnosed with Substance-related and addictive disorder

Race/Ethnicity

- ▶ Youth of color make up 46% of the youth population ages 6-17 in NC but accounted in FY 19-20 for:
 - 71% of complaints received
 - 81% of detention admissions
 - 80% of commitments to YDC

- ▶ Specifically concerning is that Black/African-American youth make up 24% of the youth population ages 6-17 in NC, but accounted in FY 19-20 for:
 - 55% of complaints received
 - 65% of detention admissions
 - 65% of commitments to YDC

JCPC Programs' Youth Served, FY 19-20

JCPC Youth Served by Race		
Race	Youth Served	% of Total
African-American	8,439	46.9%
American Indian	279	1.6%
Asian	72	0.4%
Hispanic/Latino	2,260	12.6%
Native Hawaiian	24	0.1%
Two or More Races	394	2.2%
White	6,154	34.2%
Unknown	375	2.1%
Total	17,997	



Mental Health and Ethnicity: the impact on individualized plans of care



Racial Disparities in Behavioral Health

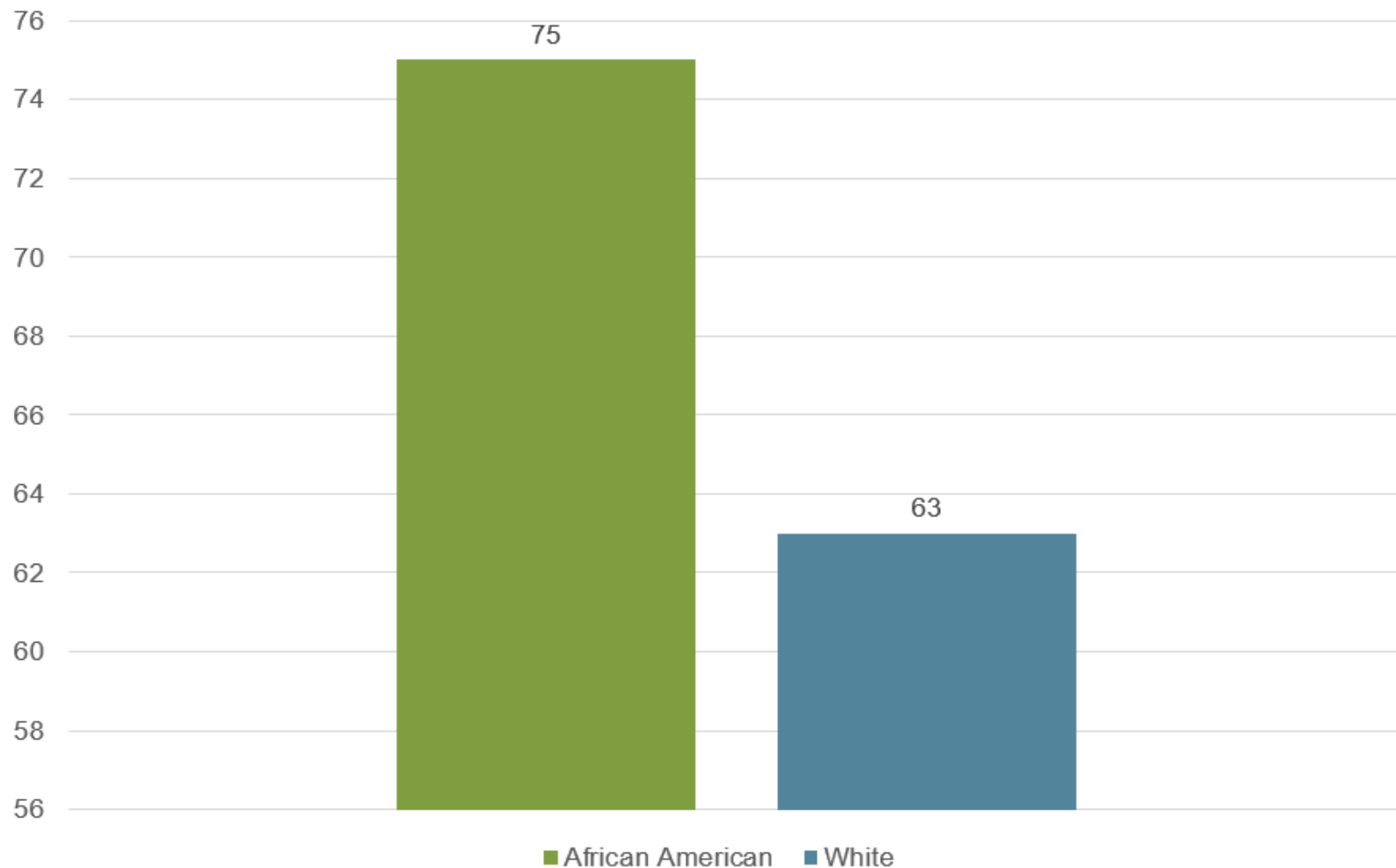
- ▶ White youth receive more services for diagnoses for depression, anxiety, and trauma/stress
- ▶ African American youth are more likely to receive an externalizing diagnosis (Oppositional Defiant, Conduct)

Tiered Care Coordination and NC TOPPS Data
NCSHHD, Mental Health Summit: September 24, 2020



North Carolina Department of Public Safety

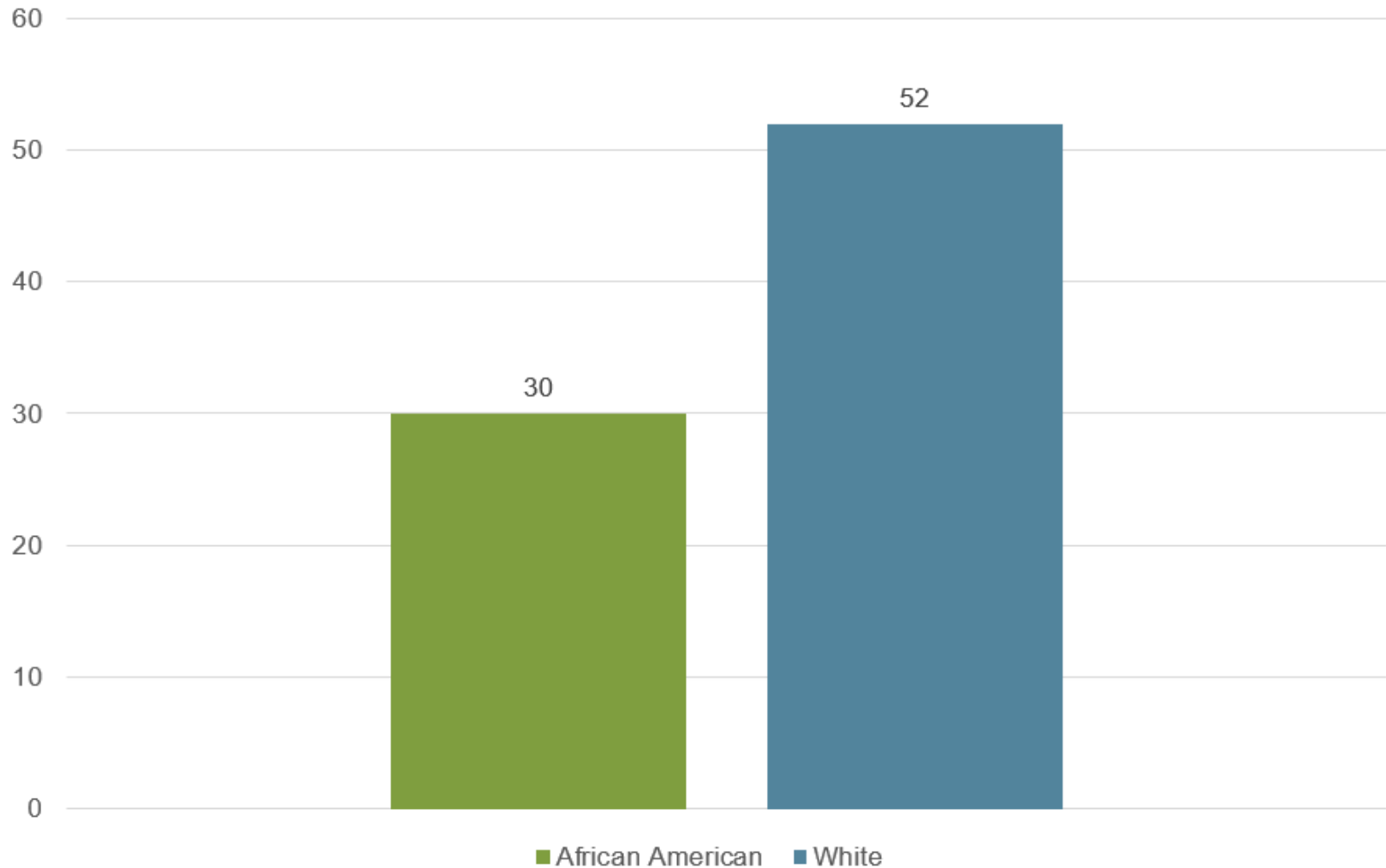
Percentage of Juvenile Justice Involved Youth with Externalizing Diagnoses by Race (NC TOPPS 2018-2019)



$\chi^2(2, N = 1749) = 32.49$ The p -value is < 0.00001 .

Cross Systems Assessment Workgroup Meeting-August 5, 2020

Percentage of Juvenile Justice Involved Youth with Internalizing Diagnoses by Race (NC TOPPS 2018-2019)



$\chi^2(2, N = 1749) = 86.18$ The p -value is < 0.00001 .

Cross Systems Assessment Workgroup Meeting-August 5, 2020

Policy and Research

- ▶ Research Collaboratives
- ▶ Diversion program expansion/access
- ▶ Minimum Age with implementation of services
- ▶ Implicit Bias training for all JJ staff
- ▶ Safer Schools Taskforce
 - Revise SRO training
 - SRO MOU's to delineate responsibility in schools

