

THE NCSTM

The National Citizen SurveyTM

Morrisville, NC

Technical Appendices
APRIL
2015



NRC
National Research Center Inc

2955 Valmont Road Suite 300
Boulder, Colorado 80301
n-r-c.com • 303-444-7863



Leaders at the Core of Better Communities

777 North Capitol Street NE Suite 500
Washington, DC 20002
icma.org • 800-745-8780

Contents

Appendix A: Complete Survey Responses	1
Appendix B: Benchmark Comparisons	21
Appendix C: Detailed Survey Methods	33
Appendix D: Survey Materials	38

Appendix A: Complete Survey Responses

Responses excluding “don’t know”

The following pages contain a complete set of responses to each question on the survey, excluding the “don’t know” responses. The percent of respondents giving a particular response is shown followed by the number of respondents (denoted with “N=”).

Table 1: Question 1

Please rate each of the following aspects of quality of life in Morrisville:	Excellent		Good		Fair		Poor		Total	
Morrisville as a place to live	45%	N=98	48%	N=104	6%	N=12	1%	N=2	100%	N=216
Your neighborhood as a place to live	41%	N=88	42%	N=91	16%	N=35	1%	N=2	100%	N=216
Morrisville as a place to raise children	47%	N=87	40%	N=74	10%	N=17	3%	N=6	100%	N=184
Morrisville as a place to work	39%	N=63	45%	N=71	14%	N=22	2%	N=3	100%	N=160
Morrisville as a place to visit	15%	N=29	30%	N=60	40%	N=79	15%	N=31	100%	N=199
Morrisville as a place to retire	27%	N=44	39%	N=64	22%	N=37	12%	N=19	100%	N=165
The overall quality of life in Morrisville	34%	N=73	56%	N=121	7%	N=15	3%	N=5	100%	N=214

Table 2: Question 2

Please rate each of the following characteristics as they relate to Morrisville as a whole:	Excellent		Good		Fair		Poor		Total	
Overall feeling of safety in Morrisville	47%	N=102	44%	N=96	6%	N=14	2%	N=5	100%	N=216
Overall ease of getting to the places you usually have to visit	30%	N=64	35%	N=76	25%	N=53	11%	N=23	100%	N=217
Quality of overall natural environment in Morrisville	24%	N=52	56%	N=121	17%	N=36	3%	N=7	100%	N=216
Overall "built environment" of Morrisville (including overall design, buildings, parks and transportation systems)	17%	N=37	33%	N=71	36%	N=78	13%	N=28	100%	N=213
Health and wellness opportunities in Morrisville	20%	N=39	46%	N=88	25%	N=49	9%	N=16	100%	N=192
Overall opportunities for education and enrichment	19%	N=35	47%	N=86	30%	N=54	3%	N=6	100%	N=181
Overall economic health of Morrisville	30%	N=56	54%	N=100	12%	N=23	4%	N=7	100%	N=186
Sense of community	12%	N=24	51%	N=101	31%	N=62	6%	N=11	100%	N=198
Overall image or reputation of Morrisville	29%	N=59	56%	N=114	13%	N=27	2%	N=4	100%	N=203

Table 3: Question 3

Please indicate how likely or unlikely you are to do each of the following:	Very likely		Somewhat likely		Somewhat unlikely		Very unlikely		Total	
Recommend living in Morrisville to someone who asks	58%	N=124	35%	N=75	5%	N=10	3%	N=6	100%	N=214
Remain in Morrisville for the next five years	57%	N=117	25%	N=50	13%	N=26	5%	N=11	100%	N=205

Table 4: Question 4

Please rate how safe or unsafe you feel:	Very safe		Somewhat safe		Neither safe nor unsafe		Somewhat unsafe		Very unsafe		Total	
In your neighborhood during the day	73%	N=157	23%	N=49	2%	N=4	1%	N=2	2%	N=4	100%	N=216
In Morrisville's business area during the day	77%	N=152	19%	N=37	2%	N=4	2%	N=3	0%	N=1	100%	N=198

The National Citizen Survey™

Table 5: Question 5

Please rate each of the following characteristics as they relate to Morrisville as a whole:	Excellent		Good		Fair		Poor		Total	
Traffic flow on major streets	3%	N=6	28%	N=61	36%	N=79	33%	N=72	100%	N=219
Ease of public parking	27%	N=53	47%	N=93	21%	N=42	5%	N=9	100%	N=197
Ease of travel by car in Morrisville	14%	N=31	41%	N=88	27%	N=59	17%	N=37	100%	N=215
Ease of travel by public transportation in Morrisville	3%	N=3	11%	N=12	14%	N=16	73%	N=84	100%	N=115
Ease of travel by bicycle in Morrisville	9%	N=13	29%	N=41	34%	N=49	27%	N=39	100%	N=143
Ease of walking in Morrisville	23%	N=46	32%	N=64	28%	N=56	17%	N=34	100%	N=200
Availability of paths and walking trails	25%	N=52	31%	N=66	30%	N=63	13%	N=28	100%	N=209
Air quality	32%	N=68	53%	N=112	14%	N=30	1%	N=1	100%	N=210
Cleanliness of Morrisville	29%	N=63	60%	N=131	11%	N=24	0%	N=1	100%	N=219
Overall appearance of Morrisville	26%	N=56	54%	N=119	16%	N=34	5%	N=10	100%	N=219
Public places where people want to spend time	17%	N=36	45%	N=95	28%	N=58	9%	N=20	100%	N=209
Variety of housing options	22%	N=46	42%	N=87	26%	N=54	9%	N=20	100%	N=207
Availability of affordable quality housing	14%	N=29	45%	N=91	25%	N=50	15%	N=30	100%	N=200
Fitness opportunities (including exercise classes and paths or trails, etc.)	19%	N=38	51%	N=102	23%	N=47	7%	N=14	100%	N=202
Recreational opportunities	12%	N=24	49%	N=100	32%	N=66	7%	N=14	100%	N=205
Availability of affordable quality food	28%	N=62	51%	N=111	17%	N=36	4%	N=8	100%	N=217
Availability of affordable quality health care	24%	N=46	50%	N=96	20%	N=37	6%	N=12	100%	N=191
Availability of preventive health services	23%	N=43	53%	N=96	16%	N=29	8%	N=14	100%	N=182
Availability of affordable quality mental health care	12%	N=10	47%	N=39	24%	N=20	18%	N=15	100%	N=83

Table 6: Question 6

Please rate each of the following characteristics as they relate to Morrisville as a whole:	Excellent		Good		Fair		Poor		Total	
Availability of affordable quality child care/preschool	19%	N=22	50%	N=56	27%	N=31	4%	N=4	100%	N=112
K-12 education	32%	N=40	48%	N=58	16%	N=20	4%	N=5	100%	N=123
Adult educational opportunities	18%	N=18	27%	N=27	36%	N=36	19%	N=19	100%	N=101
Opportunities to attend cultural/arts/music activities	9%	N=15	33%	N=58	43%	N=75	15%	N=26	100%	N=174
Opportunities to participate in religious or spiritual events and activities	22%	N=30	50%	N=68	21%	N=28	7%	N=10	100%	N=135
Employment opportunities	16%	N=26	49%	N=78	30%	N=48	5%	N=9	100%	N=161
Shopping opportunities	28%	N=61	44%	N=95	26%	N=57	1%	N=2	100%	N=215
Cost of living in Morrisville	12%	N=26	45%	N=97	35%	N=76	7%	N=16	100%	N=214
Overall quality of business and service establishments in Morrisville	17%	N=34	63%	N=128	18%	N=37	2%	N=5	100%	N=204
Vibrant downtown/commercial area	4%	N=7	27%	N=51	31%	N=58	39%	N=74	100%	N=190
Overall quality of new development in Morrisville	15%	N=31	45%	N=93	30%	N=63	10%	N=21	100%	N=209
Opportunities to participate in social events and activities	8%	N=14	45%	N=80	39%	N=70	8%	N=14	100%	N=179
Opportunities to volunteer	9%	N=11	47%	N=60	37%	N=47	7%	N=9	100%	N=128
Opportunities to participate in community matters	11%	N=17	46%	N=70	35%	N=53	7%	N=11	100%	N=151
Openness and acceptance of the community toward people of diverse backgrounds	29%	N=58	51%	N=102	18%	N=37	2%	N=4	100%	N=201
Neighborliness of residents in Morrisville	18%	N=38	44%	N=94	32%	N=68	7%	N=15	100%	N=215

The National Citizen Survey™

Table 7: Question 7

Please indicate whether or not you have done each of the following in the last 12 months.	No		Yes		Total	
Made efforts to conserve water	16%	N=36	84%	N=184	100%	N=219
Made efforts to make your home more energy efficient	19%	N=41	81%	N=178	100%	N=219
Observed a code violation or other hazard in Morrisville	75%	N=163	25%	N=55	100%	N=219
Household member was a victim of a crime in Morrisville	93%	N=200	7%	N=15	100%	N=216
Reported a crime to the police in Morrisville	90%	N=198	10%	N=21	100%	N=219
Stocked supplies in preparation for an emergency	57%	N=126	43%	N=93	100%	N=218
Campaigned or advocated for an issue, cause or candidate	84%	N=184	16%	N=35	100%	N=219
Contacted the Town of Morrisville (in-person, phone, email or web) for help or information	67%	N=147	33%	N=72	100%	N=219
Contacted Morrisville elected officials (in-person, phone, email or web) to express your opinion	89%	N=195	11%	N=23	100%	N=218

Table 8: Question 8

In the last 12 months, about how many times, if at all, have you or other household members done each of the following in Morrisville?	2 times a week or more		2-4 times a month		Once a month or less		Not at all		Total	
Used Morrisville recreation centers or their services	10%	N=21	17%	N=36	35%	N=75	39%	N=84	100%	N=216
Visited a neighborhood park or Town park	13%	N=28	32%	N=68	36%	N=77	19%	N=41	100%	N=214
Used Morrisville public libraries or their services	10%	N=22	27%	N=59	22%	N=47	41%	N=87	100%	N=215
Participated in religious or spiritual activities in Morrisville	8%	N=18	16%	N=35	9%	N=19	66%	N=143	100%	N=215
Attended a Town-sponsored event	2%	N=4	1%	N=3	35%	N=75	62%	N=135	100%	N=216
Used bus, rail, subway or other public transportation instead of driving	1%	N=2	1%	N=2	1%	N=3	97%	N=209	100%	N=216
Carpooled with other adults or children instead of driving alone	10%	N=21	6%	N=13	10%	N=23	74%	N=160	100%	N=216
Walked or biked instead of driving	9%	N=20	13%	N=29	25%	N=54	52%	N=113	100%	N=215
Volunteered your time to some group/activity in Morrisville	2%	N=3	4%	N=9	13%	N=27	81%	N=175	100%	N=215
Participated in a club	1%	N=2	3%	N=7	7%	N=15	89%	N=189	100%	N=213
Talked to or visited with your immediate neighbors	27%	N=58	33%	N=71	25%	N=54	15%	N=32	100%	N=215
Done a favor for a neighbor	13%	N=27	22%	N=48	33%	N=72	32%	N=70	100%	N=216

Table 9: Question 9

Thinking about local public meetings (of local elected officials like Town Council or County Commissioners, advisory boards, town halls, HOA, neighborhood watch, etc.), in the last 12 months, about how many times, if at all, have you or other household members attended a local public meeting?	2 times a week or more		2-4 times a month		Once a month or less		Not at all		Total	
Attended a Town of Morrisville Council Meeting	0%	N=0	2%	N=5	10%	N=21	88%	N=189	100%	N=215
Attended a Town of Morrisville Advisory Committee Meeting	0%	N=1	1%	N=2	8%	N=18	90%	N=194	100%	N=215
Attended an HOA or Neighborhood Watch Meeting	1%	N=1	1%	N=1	22%	N=37	77%	N=132	100%	N=172

The National Citizen Survey™

Table 10: Question 10

Please rate the quality of each of the following services in Morrisville:	Excellent		Good		Fair		Poor		Total	
Police services	41%	N=68	50%	N=82	8%	N=14	1%	N=1	100%	N=165
Fire services	45%	N=67	50%	N=75	5%	N=7	0%	N=0	100%	N=149
Ambulance or emergency medical services	43%	N=54	52%	N=64	5%	N=6	0%	N=0	100%	N=123
Crime prevention	27%	N=40	53%	N=79	17%	N=26	3%	N=4	100%	N=150
Fire prevention and education	33%	N=43	56%	N=74	9%	N=12	2%	N=2	100%	N=132
Traffic enforcement	15%	N=25	45%	N=76	30%	N=50	10%	N=17	100%	N=168
Street repair	7%	N=14	34%	N=65	28%	N=53	31%	N=60	100%	N=192
Street cleaning	13%	N=25	44%	N=84	36%	N=67	7%	N=13	100%	N=189
Street lighting	13%	N=27	45%	N=94	32%	N=66	9%	N=19	100%	N=206
Snow removal	14%	N=25	51%	N=88	23%	N=40	11%	N=19	100%	N=171
Sidewalk maintenance	19%	N=36	50%	N=94	22%	N=41	9%	N=17	100%	N=189
Traffic signal timing	11%	N=23	35%	N=72	36%	N=72	18%	N=36	100%	N=204
Bus or transit services	6%	N=5	21%	N=19	11%	N=9	63%	N=56	100%	N=90
Garbage collection	40%	N=75	47%	N=88	12%	N=23	1%	N=3	100%	N=189
Recycling	37%	N=71	46%	N=88	10%	N=20	6%	N=11	100%	N=189
Yard waste pick-up	31%	N=40	53%	N=68	10%	N=13	6%	N=7	100%	N=128
Storm drainage	20%	N=34	54%	N=89	18%	N=31	7%	N=12	100%	N=166
Drinking water	29%	N=60	58%	N=120	9%	N=19	3%	N=6	100%	N=206
Sewer services	28%	N=50	61%	N=109	10%	N=18	1%	N=1	100%	N=178
Power (electric and/or gas) utility	31%	N=63	55%	N=112	11%	N=23	3%	N=6	100%	N=204
Utility billing	22%	N=45	54%	N=108	17%	N=34	7%	N=15	100%	N=202
Town parks	32%	N=62	48%	N=92	15%	N=29	5%	N=9	100%	N=193
Recreation programs or classes	23%	N=30	51%	N=65	19%	N=25	7%	N=8	100%	N=128
Recreation centers or facilities	24%	N=33	47%	N=65	18%	N=25	11%	N=16	100%	N=140
Land use, planning and zoning	9%	N=13	41%	N=61	33%	N=49	17%	N=26	100%	N=149
Code enforcement (weeds, abandoned buildings, etc.)	15%	N=19	56%	N=74	22%	N=29	7%	N=9	100%	N=131
Animal control	19%	N=21	58%	N=64	19%	N=21	5%	N=6	100%	N=111
Economic development	16%	N=26	57%	N=94	22%	N=37	5%	N=8	100%	N=165
Health services	16%	N=25	61%	N=96	18%	N=28	5%	N=7	100%	N=156
Public library services	42%	N=64	37%	N=57	11%	N=17	10%	N=15	100%	N=153
Public information services	17%	N=26	56%	N=86	24%	N=37	3%	N=5	100%	N=153
Cable television	13%	N=21	34%	N=56	32%	N=53	21%	N=34	100%	N=164
Emergency preparedness (services that prepare the community for natural disasters or other emergency situations)	13%	N=15	54%	N=64	24%	N=29	8%	N=10	100%	N=118
Preservation of natural areas such as open space, farmlands and greenbelts	9%	N=15	46%	N=76	27%	N=44	17%	N=28	100%	N=164
Morrisville open space	9%	N=16	40%	N=71	38%	N=69	13%	N=23	100%	N=179
Town-sponsored special events	18%	N=25	46%	N=64	25%	N=35	11%	N=15	100%	N=139
Overall customer service by Morrisville employees (police, receptionists, planners, etc.)	24%	N=39	56%	N=90	15%	N=25	4%	N=6	100%	N=160

The National Citizen Survey™

Table 11: Question 11

Overall, how would you rate the quality of the services provided by each of the following?	Excellent		Good		Fair		Poor		Don't know		Total	
The Town of Morrisville	21%	N=43	66%	N=131	9%	N=18	3%	N=7	0%	N=0	100%	N=199
The Federal Government	11%	N=21	44%	N=81	34%	N=63	10%	N=19	0%	N=0	100%	N=184
Wake County	11%	N=24	56%	N=122	19%	N=40	3%	N=7	11%	N=23	100%	N=215
Wake County Public School System	12%	N=26	33%	N=70	16%	N=35	7%	N=16	32%	N=68	100%	N=215

Table 12: Question 12

Please rate the following categories of Morrisville government performance:	Excellent		Good		Fair		Poor		Total	
The value of services for the taxes paid to Morrisville	12%	N=22	53%	N=96	28%	N=52	7%	N=13	100%	N=182
The overall direction that Morrisville is taking	15%	N=28	55%	N=105	17%	N=33	13%	N=24	100%	N=191
The job Morrisville government does at welcoming citizen involvement	12%	N=20	60%	N=99	17%	N=28	10%	N=16	100%	N=163
Overall confidence in Morrisville government	13%	N=23	59%	N=107	20%	N=36	8%	N=15	100%	N=180
Generally acting in the best interest of the community	16%	N=28	54%	N=99	24%	N=44	6%	N=11	100%	N=183
Being honest	18%	N=29	53%	N=86	24%	N=38	5%	N=9	100%	N=162
Treating all residents fairly	20%	N=35	55%	N=93	20%	N=34	5%	N=9	100%	N=171

Table 13: Question 13

Please rate how important, if at all, you think it is for the Morrisville community to focus on each of the following in the coming two years:	Essential		Very important		Somewhat important		Not at all important		Total	
Overall feeling of safety in Morrisville	55%	N=115	32%	N=67	11%	N=22	3%	N=6	100%	N=211
Overall ease of getting to the places you usually have to visit	50%	N=106	38%	N=80	11%	N=24	1%	N=3	100%	N=212
Quality of overall natural environment in Morrisville	45%	N=95	43%	N=91	12%	N=25	0%	N=0	100%	N=211
Overall "built environment" of Morrisville (including overall design, buildings, parks and transportation systems)	40%	N=84	41%	N=86	17%	N=35	3%	N=7	100%	N=212
Health and wellness opportunities in Morrisville	23%	N=48	46%	N=97	29%	N=62	2%	N=5	100%	N=212
Overall opportunities for education and enrichment	33%	N=69	36%	N=76	29%	N=60	2%	N=4	100%	N=209
Overall economic health of Morrisville	42%	N=87	49%	N=103	9%	N=19	0%	N=0	100%	N=210
Sense of community	34%	N=73	39%	N=84	24%	N=50	3%	N=6	100%	N=212

Table 14: Question 14

Planning for large capital investment projects can represent a challenge in aligning resources effectively to the needs valued by the community. To better gauge community support to plan for capital spending, please indicate how important, if at all, each of the following projects and issues will be for the Town to address over the next five years:	Essential		Very important		Somewhat important		Not at all important		Total	
Cultural/Historical improvements	13%	N=26	27%	N=56	43%	N=88	17%	N=34	100%	N=203
Environmental/Stormwater improvements	24%	N=49	45%	N=92	28%	N=57	2%	N=4	100%	N=203
Parks/Recreational improvements	28%	N=60	46%	N=97	22%	N=45	4%	N=9	100%	N=210
Bicycle/Pedestrian improvements	30%	N=63	36%	N=75	27%	N=56	7%	N=16	100%	N=209
Public facility improvements	18%	N=36	39%	N=77	38%	N=76	5%	N=10	100%	N=198
Public safety improvements	31%	N=62	41%	N=83	23%	N=48	5%	N=10	100%	N=203

The National Citizen Survey™

Planning for large capital investment projects can represent a challenge in aligning resources effectively to the needs valued by the community. To better gauge community support to plan for capital spending, please indicate how important, if at all, each of the following projects and issues will be for the Town to address over the next five years:	Essential		Very important		Somewhat important		Not at all important		Total	
Roadway/Transportation improvements	60%	N=126	29%	N=61	10%	N=21	1%	N=3	100%	N=210
Town Center/Main Street implementation	24%	N=48	26%	N=53	34%	N=68	16%	N=33	100%	N=202
Other	71%	N=35	24%	N=12	1%	N=0	5%	N=2	100%	N=49

Table 15: Question 15

The town operating budget does not have the capacity to pay for significant capital improvements without issuing debt. A tax rate increase is generally needed to pay debt service payments. Please indicate to what extent you would support or oppose a tax rate increase to fund each of the following capital investment projects:	Strongly support		Somewhat support		Somewhat oppose		Strongly oppose		Total	
Cultural/Historical improvements	7%	N=14	34%	N=72	33%	N=70	25%	N=53	100%	N=210
Environmental/Stormwater improvements	22%	N=46	53%	N=112	19%	N=39	6%	N=12	100%	N=210
Parks/Recreational improvements	25%	N=52	56%	N=118	13%	N=27	7%	N=14	100%	N=211
Bicycle/Pedestrian improvements	22%	N=47	48%	N=101	21%	N=44	9%	N=19	100%	N=211
Public facility improvements	14%	N=29	54%	N=113	25%	N=52	8%	N=17	100%	N=210
Public safety improvements	32%	N=67	47%	N=99	16%	N=34	5%	N=11	100%	N=210
Roadway/Transportation improvements	52%	N=110	31%	N=65	9%	N=19	8%	N=18	100%	N=212
Town Center/Main Street implementation	18%	N=37	30%	N=61	29%	N=59	24%	N=48	100%	N=205
Other	35%	N=16	22%	N=10	16%	N=8	26%	N=12	100%	N=46

Table 16: Question 16

The majority of traffic issues in Morrisville occur on State-owned roads (NC54, Morrisville-Carpenter Road, Aviation Parkway, etc.). Typically State dollars fund any improvements on these roads, but may take many years to be prioritized for construction. Would you support using Town funds to improve State-owned roadways?	Percent	Number
Strongly support	48%	N=103
Somewhat support	34%	N=73
Somewhat oppose	8%	N=17
Strongly oppose	9%	N=20
Total	100%	N=213

Table 17: Question D1

How often, if at all, do you do each of the following, considering all of the times you could?	Never		Rarely		Sometimes		Usually		Always		Total	
Recycle at home	7%	N=14	6%	N=13	10%	N=22	22%	N=46	55%	N=117	100%	N=212
Purchase goods or services from a business located in Morrisville	0%	N=0	1%	N=3	24%	N=50	48%	N=101	26%	N=55	100%	N=209
Eat at least 5 portions of fruits and vegetables a day	1%	N=2	9%	N=19	37%	N=77	37%	N=79	16%	N=34	100%	N=211
Participate in moderate or vigorous physical activity	4%	N=8	12%	N=26	37%	N=78	33%	N=70	14%	N=29	100%	N=211
Read or watch local news (via television, paper, computer, etc.)	5%	N=11	12%	N=25	24%	N=51	27%	N=56	32%	N=69	100%	N=212
Vote in local elections	19%	N=38	5%	N=10	14%	N=28	15%	N=31	47%	N=97	100%	N=205

The National Citizen Survey™

Table 18: Question D2

Would you say that in general your health is:	Percent	Number
Excellent	26%	N=54
Very good	42%	N=89
Good	27%	N=57
Fair	3%	N=7
Poor	1%	N=3
Total	100%	N=211

Table 19: Question D3

What impact, if any, do you think the economy will have on your family income in the next 6 months? Do you think the impact will be	Percent	Number
Very positive	9%	N=20
Somewhat positive	38%	N=80
Neutral	41%	N=86
Somewhat negative	11%	N=23
Very negative	1%	N=2
Total	100%	N=211

Table 20: Question D4

What is your employment status?	Percent	Number
Working full time for pay	77%	N=161
Working part time for pay	6%	N=12
Unemployed, looking for paid work	6%	N=14
Unemployed, not looking for paid work	4%	N=8
Fully retired	7%	N=15
Total	100%	N=209

Table 21: Question D5

Do you work inside the boundaries of Morrisville?	Percent	Number
Yes, outside the home	28%	N=58
Yes, from home	10%	N=20
No	62%	N=129
Total	100%	N=207

The National Citizen Survey™

Table 22: Question D6

How many years have you lived in Morrisville?	Percent	Number
Less than 2 years	39%	N=83
2 to 5 years	27%	N=56
6 to 10 years	18%	N=39
11 to 20 years	15%	N=31
More than 20 years	1%	N=2
Total	100%	N=211

Table 23: Question D7

Which best describes the building you live in?	Percent	Number
One family house detached from any other houses	38%	N=80
Building with two or more homes (duplex, townhome, apartment or condominium)	60%	N=127
Mobile home	0%	N=0
Other	2%	N=4
Total	100%	N=211

Table 24: Question D8

Is this house, apartment or mobile home...	Percent	Number
Rented	51%	N=108
Owned	49%	N=103
Total	100%	N=211

Table 25: Question D9

About how much is your monthly housing cost for the place you live (including rent, mortgage payment, property tax, property insurance and homeowners' association (HOA) fees)?	Percent	Number
Less than \$300 per month	3%	N=6
\$300 to \$599 per month	4%	N=8
\$600 to \$999 per month	26%	N=55
\$1,000 to \$1,499 per month	40%	N=83
\$1,500 to \$2,499 per month	19%	N=39
\$2,500 or more per month	9%	N=19
Total	100%	N=210

Table 26: Question D10

Do any children 17 or under live in your household?	Percent	Number
No	52%	N=110
Yes	48%	N=102
Total	100%	N=212

The National Citizen Survey™

Table 27: Question D11

Are you or any other members of your household aged 65 or older?	Percent	Number
No	87%	N=184
Yes	13%	N=28
Total	100%	N=212

Table 28: Question D12

How much do you anticipate your household's total income before taxes will be for the current year? (Please include in your total income money from all sources for all persons living in your household.)	Percent	Number
Less than \$25,000	8%	N=16
\$25,000 to \$49,999	14%	N=29
\$50,000 to \$99,999	29%	N=61
\$100,000 to \$149,999	28%	N=59
\$150,000 or more	21%	N=43
Total	100%	N=207

Table 29: Question D13

Are you Spanish, Hispanic or Latino?	Percent	Number
No, not Spanish, Hispanic or Latino	94%	N=200
Yes, I consider myself to be Spanish, Hispanic or Latino	6%	N=12
Total	100%	N=211

Table 30: Question D14

What is your race? (Mark one or more races to indicate what race(s) you consider yourself to be.)	Percent	Number
American Indian or Alaskan Native	3%	N=6
Asian, Asian Indian or Pacific Islander	29%	N=60
Black or African American	8%	N=17
White	60%	N=125
Other	2%	N=5

Total may exceed 100% as respondents could select more than one option.

The National Citizen Survey™

Table 31: Question D15

In which category is your age?	Percent	Number
18 to 24 years	4%	N=9
25 to 34 years	35%	N=74
35 to 44 years	23%	N=49
45 to 54 years	21%	N=44
55 to 64 years	9%	N=19
65 to 74 years	5%	N=10
75 years or older	3%	N=6
Total	100%	N=210

Table 32: Question D16

What is your sex?	Percent	Number
Female	52%	N=108
Male	48%	N=101
Total	100%	N=209

Table 33: Question D17

Do you consider a cell phone or landline your primary telephone number?	Percent	Number
Cell	70%	N=149
Land line	16%	N=34
Both	14%	N=29
Total	100%	N=212

The National Citizen Survey™

Responses including “don’t know”

The following pages contain a complete set of responses to each question on the survey, including the “don’t know” responses. The percent of respondents giving a particular response is shown followed by the number of respondents (denoted with “N=”).

Table 34: Question 1

Please rate each of the following aspects of quality of life in Morrisville:	Excellent		Good		Fair		Poor		Don't know		Total	
Morrisville as a place to live	45%	N=98	48%	N=104	5%	N=12	1%	N=2	0%	N=1	100%	N=217
Your neighborhood as a place to live	41%	N=88	42%	N=91	16%	N=35	1%	N=2	0%	N=1	100%	N=217
Morrisville as a place to raise children	40%	N=87	34%	N=74	8%	N=17	3%	N=6	15%	N=33	100%	N=217
Morrisville as a place to work	29%	N=63	33%	N=71	10%	N=22	2%	N=3	26%	N=56	100%	N=216
Morrisville as a place to visit	14%	N=29	27%	N=60	37%	N=79	14%	N=31	8%	N=18	100%	N=217
Morrisville as a place to retire	21%	N=44	30%	N=64	17%	N=37	9%	N=19	23%	N=50	100%	N=214
The overall quality of life in Morrisville	34%	N=73	56%	N=121	7%	N=15	3%	N=5	1%	N=3	100%	N=217

Table 35: Question 2

Please rate each of the following characteristics as they relate to Morrisville as a whole:	Excellent		Good		Fair		Poor		Don't know		Total	
Overall feeling of safety in Morrisville	47%	N=102	44%	N=96	6%	N=14	2%	N=5	0%	N=1	100%	N=217
Overall ease of getting to the places you usually have to visit	30%	N=64	35%	N=76	25%	N=53	11%	N=23	0%	N=1	100%	N=218
Quality of overall natural environment in Morrisville	24%	N=52	56%	N=121	17%	N=36	3%	N=7	0%	N=0	100%	N=216
Overall "built environment" of Morrisville (including overall design, buildings, parks and transportation systems)	17%	N=37	33%	N=71	36%	N=78	13%	N=28	1%	N=2	100%	N=215
Health and wellness opportunities in Morrisville	18%	N=39	41%	N=88	23%	N=49	8%	N=16	11%	N=24	100%	N=216
Overall opportunities for education and enrichment	16%	N=35	39%	N=86	25%	N=54	3%	N=6	17%	N=36	100%	N=217
Overall economic health of Morrisville	26%	N=56	46%	N=100	11%	N=23	3%	N=7	14%	N=31	100%	N=218
Sense of community	11%	N=24	47%	N=101	29%	N=62	5%	N=11	8%	N=18	100%	N=215
Overall image or reputation of Morrisville	27%	N=59	53%	N=114	12%	N=27	2%	N=4	6%	N=13	100%	N=216

Table 36: Question 3

Please indicate how likely or unlikely you are to do each of the following:	Very likely		Somewhat likely		Somewhat unlikely		Very unlikely		Don't know		Total	
Recommend living in Morrisville to someone who asks	57%	N=124	35%	N=75	5%	N=10	3%	N=6	0%	N=1	100%	N=215
Remain in Morrisville for the next five years	54%	N=117	23%	N=50	12%	N=26	5%	N=11	6%	N=13	100%	N=218

Table 37: Question 4

Please rate how safe or unsafe you feel:	Very safe		Somewhat safe		Neither safe nor unsafe		Somewhat unsafe		Very unsafe		Don't know		Total	
In your neighborhood during the day	72%	N=157	22%	N=49	2%	N=4	1%	N=2	2%	N=4	1%	N=2	100%	N=218
In Morrisville's business area during the day	70%	N=152	17%	N=37	2%	N=4	2%	N=3	0%	N=1	9%	N=19	100%	N=217

The National Citizen Survey™

Table 38: Question 5

Please rate each of the following characteristics as they relate to Morrisville as a whole:	Excellent		Good		Fair		Poor		Don't know		Total	
Traffic flow on major streets	3%	N=6	28%	N=61	36%	N=79	33%	N=72	0%	N=0	100%	N=219
Ease of public parking	24%	N=53	43%	N=93	19%	N=42	4%	N=9	10%	N=21	100%	N=218
Ease of travel by car in Morrisville	14%	N=31	40%	N=88	27%	N=59	17%	N=37	1%	N=3	100%	N=218
Ease of travel by public transportation in Morrisville	1%	N=3	6%	N=12	7%	N=16	38%	N=84	47%	N=104	100%	N=218
Ease of travel by bicycle in Morrisville	6%	N=13	19%	N=41	22%	N=49	18%	N=39	35%	N=76	100%	N=219
Ease of walking in Morrisville	21%	N=46	29%	N=64	26%	N=56	16%	N=34	8%	N=18	100%	N=218
Availability of paths and walking trails	24%	N=52	30%	N=66	29%	N=63	13%	N=28	4%	N=8	100%	N=217
Air quality	31%	N=68	51%	N=112	14%	N=30	1%	N=1	4%	N=9	100%	N=219
Cleanliness of Morrisville	29%	N=63	60%	N=131	11%	N=24	0%	N=1	0%	N=0	100%	N=219
Overall appearance of Morrisville	26%	N=56	54%	N=119	16%	N=34	5%	N=10	0%	N=0	100%	N=219
Public places where people want to spend time	17%	N=36	44%	N=95	27%	N=58	9%	N=20	4%	N=9	100%	N=217
Variety of housing options	21%	N=46	40%	N=87	25%	N=54	9%	N=20	5%	N=11	100%	N=218
Availability of affordable quality housing	13%	N=29	42%	N=91	23%	N=50	14%	N=30	8%	N=17	100%	N=217
Fitness opportunities (including exercise classes and paths or trails, etc.)	17%	N=38	47%	N=102	21%	N=47	7%	N=14	8%	N=17	100%	N=218
Recreational opportunities	11%	N=24	46%	N=100	30%	N=66	7%	N=14	6%	N=13	100%	N=219
Availability of affordable quality food	28%	N=62	51%	N=111	16%	N=36	4%	N=8	1%	N=2	100%	N=219
Availability of affordable quality health care	21%	N=46	44%	N=96	17%	N=37	6%	N=12	12%	N=27	100%	N=218
Availability of preventive health services	20%	N=43	44%	N=96	13%	N=29	6%	N=14	16%	N=36	100%	N=218
Availability of affordable quality mental health care	5%	N=10	18%	N=39	9%	N=20	7%	N=15	62%	N=135	100%	N=218

Table 39: Question 6

Please rate each of the following characteristics as they relate to Morrisville as a whole:	Excellent		Good		Fair		Poor		Don't know		Total	
Availability of affordable quality child care/preschool	10%	N=22	25%	N=56	14%	N=31	2%	N=4	49%	N=107	100%	N=219
K-12 education	18%	N=40	27%	N=58	9%	N=20	2%	N=5	44%	N=96	100%	N=219
Adult educational opportunities	8%	N=18	13%	N=27	17%	N=36	9%	N=19	54%	N=116	100%	N=217
Opportunities to attend cultural/arts/music activities	7%	N=15	27%	N=58	34%	N=75	12%	N=26	20%	N=43	100%	N=217
Opportunities to participate in religious or spiritual events and activities	14%	N=30	31%	N=68	13%	N=28	5%	N=10	37%	N=80	100%	N=216
Employment opportunities	12%	N=26	36%	N=78	22%	N=48	4%	N=9	26%	N=57	100%	N=218
Shopping opportunities	28%	N=61	44%	N=95	26%	N=57	1%	N=2	1%	N=1	100%	N=216
Cost of living in Morrisville	12%	N=26	45%	N=97	35%	N=76	7%	N=16	2%	N=3	100%	N=218
Overall quality of business and service establishments in Morrisville	16%	N=34	61%	N=128	17%	N=37	2%	N=5	4%	N=8	100%	N=212
Vibrant downtown/commercial area	3%	N=7	24%	N=51	27%	N=58	34%	N=74	12%	N=26	100%	N=217
Overall quality of new development in Morrisville	14%	N=31	43%	N=93	29%	N=63	9%	N=21	4%	N=8	100%	N=217
Opportunities to participate in social events and activities	7%	N=14	37%	N=80	33%	N=70	7%	N=14	17%	N=38	100%	N=217
Opportunities to volunteer	5%	N=11	28%	N=60	21%	N=47	4%	N=9	41%	N=90	100%	N=218
Opportunities to participate in community matters	8%	N=17	33%	N=70	25%	N=53	5%	N=11	29%	N=61	100%	N=212
Openness and acceptance of the community toward people of diverse backgrounds	27%	N=58	47%	N=102	17%	N=37	2%	N=4	8%	N=17	100%	N=218
Neighborliness of residents in Morrisville	17%	N=38	43%	N=94	31%	N=68	7%	N=15	1%	N=3	100%	N=218

The National Citizen Survey™

Table 40: Question 7

Please indicate whether or not you have done each of the following in the last 12 months.	No		Yes		Total	
Made efforts to conserve water	16%	N=36	84%	N=184	100%	N=219
Made efforts to make your home more energy efficient	19%	N=41	81%	N=178	100%	N=219
Observed a code violation or other hazard in Morrisville	75%	N=163	25%	N=55	100%	N=219
Household member was a victim of a crime in Morrisville	93%	N=200	7%	N=15	100%	N=219
Reported a crime to the police in Morrisville	90%	N=198	10%	N=21	100%	N=219
Stocked supplies in preparation for an emergency	57%	N=126	43%	N=93	100%	N=218
Campaigned or advocated for an issue, cause or candidate	84%	N=184	16%	N=35	100%	N=219
Contacted the Town of Morrisville (in-person, phone, email or web) for help or information	67%	N=147	33%	N=72	100%	N=219
Contacted Morrisville elected officials (in-person, phone, email or web) to express your opinion	89%	N=195	11%	N=23	100%	N=218

Table 41: Question 8

In the last 12 months, about how many times, if at all, have you or other household members done each of the following in Morrisville?	2 times a week or more		2-4 times a month		Once a month or less		Not at all		Total	
Used Morrisville recreation centers or their services	10%	N=21	17%	N=36	35%	N=75	39%	N=84	100%	N=216
Visited a neighborhood park or Town park	13%	N=28	32%	N=68	36%	N=77	19%	N=41	100%	N=214
Used Morrisville public libraries or their services	10%	N=22	27%	N=59	22%	N=47	41%	N=87	100%	N=215
Participated in religious or spiritual activities in Morrisville	8%	N=18	16%	N=35	9%	N=19	66%	N=143	100%	N=215
Attended a Town-sponsored event	2%	N=4	1%	N=3	35%	N=75	62%	N=135	100%	N=216
Used bus, rail, subway or other public transportation instead of driving	1%	N=2	1%	N=2	1%	N=3	97%	N=209	100%	N=216
Carpooled with other adults or children instead of driving alone	10%	N=21	6%	N=13	10%	N=23	74%	N=160	100%	N=216
Walked or biked instead of driving	9%	N=20	13%	N=29	25%	N=54	52%	N=113	100%	N=215
Volunteered your time to some group/activity in Morrisville	2%	N=3	4%	N=9	13%	N=27	81%	N=175	100%	N=215
Participated in a club	1%	N=2	3%	N=7	7%	N=15	89%	N=189	100%	N=213
Talked to or visited with your immediate neighbors	27%	N=58	33%	N=71	25%	N=54	15%	N=32	100%	N=215
Done a favor for a neighbor	13%	N=27	22%	N=48	33%	N=72	32%	N=70	100%	N=216

Table 42: Question 9

Thinking about local public meetings (of local elected officials like Town Council or County Commissioners, advisory boards, town halls, HOA, neighborhood watch, etc.), in the last 12 months, about how many times, if at all, have you or other household members attended a local public meeting?	2 times a week or more		2-4 times a month		Once a month or less		Not at all		Total	
Attended a Town of Morrisville Council Meeting	0%	N=0	2%	N=5	10%	N=21	88%	N=189	100%	N=215
Attended a Town of Morrisville Advisory Committee Meeting	0%	N=1	1%	N=2	8%	N=18	90%	N=194	100%	N=215
Attended an HOA or Neighborhood Watch Meeting	1%	N=1	1%	N=1	22%	N=37	77%	N=132	100%	N=172

The National Citizen Survey™

Table 43: Question 10

Please rate the quality of each of the following services in Morrisville:	Excellent		Good		Fair		Poor		Don't know		Total	
Police services	32%	N=68	38%	N=82	6%	N=14	1%	N=1	23%	N=48	100%	N=214
Fire services	31%	N=67	35%	N=75	3%	N=7	0%	N=0	31%	N=65	100%	N=214
Ambulance or emergency medical services	25%	N=54	30%	N=64	3%	N=6	0%	N=0	42%	N=90	100%	N=214
Crime prevention	19%	N=40	37%	N=79	12%	N=26	2%	N=4	30%	N=64	100%	N=214
Fire prevention and education	20%	N=43	35%	N=74	6%	N=12	1%	N=2	38%	N=82	100%	N=214
Traffic enforcement	12%	N=25	36%	N=76	24%	N=50	8%	N=17	21%	N=44	100%	N=212
Street repair	7%	N=14	31%	N=65	25%	N=53	29%	N=60	9%	N=18	100%	N=210
Street cleaning	12%	N=25	40%	N=84	32%	N=67	6%	N=13	11%	N=22	100%	N=212
Street lighting	13%	N=27	44%	N=94	31%	N=66	9%	N=19	3%	N=6	100%	N=212
Snow removal	12%	N=25	42%	N=88	19%	N=40	9%	N=19	18%	N=38	100%	N=209
Sidewalk maintenance	17%	N=36	45%	N=94	20%	N=41	8%	N=17	10%	N=22	100%	N=211
Traffic signal timing	11%	N=23	34%	N=72	34%	N=72	17%	N=36	3%	N=7	100%	N=211
Bus or transit services	3%	N=5	9%	N=19	5%	N=9	27%	N=56	57%	N=120	100%	N=209
Garbage collection	35%	N=75	42%	N=88	11%	N=23	1%	N=3	11%	N=22	100%	N=211
Recycling	33%	N=71	42%	N=88	9%	N=20	5%	N=11	11%	N=22	100%	N=212
Yard waste pick-up	19%	N=40	32%	N=68	6%	N=13	3%	N=7	39%	N=83	100%	N=212
Storm drainage	16%	N=34	43%	N=89	15%	N=31	6%	N=12	20%	N=42	100%	N=208
Drinking water	29%	N=60	57%	N=120	9%	N=19	3%	N=6	3%	N=5	100%	N=211
Sewer services	24%	N=50	51%	N=109	8%	N=18	0%	N=1	16%	N=34	100%	N=212
Power (electric and/or gas) utility	30%	N=63	54%	N=112	11%	N=23	3%	N=6	2%	N=4	100%	N=207
Utility billing	21%	N=45	51%	N=108	16%	N=34	7%	N=15	4%	N=9	100%	N=212
Town parks	29%	N=62	44%	N=92	14%	N=29	4%	N=9	9%	N=19	100%	N=212
Recreation programs or classes	14%	N=30	31%	N=65	12%	N=25	4%	N=8	39%	N=81	100%	N=209
Recreation centers or facilities	16%	N=33	32%	N=65	12%	N=25	8%	N=16	31%	N=64	100%	N=204
Land use, planning and zoning	6%	N=13	29%	N=61	23%	N=49	12%	N=26	29%	N=62	100%	N=210
Code enforcement (weeds, abandoned buildings, etc.)	9%	N=19	35%	N=74	14%	N=29	4%	N=9	38%	N=80	100%	N=211
Animal control	10%	N=21	30%	N=64	10%	N=21	3%	N=6	47%	N=100	100%	N=211
Economic development	12%	N=26	44%	N=94	17%	N=37	4%	N=8	22%	N=46	100%	N=212
Health services	12%	N=25	46%	N=96	13%	N=28	4%	N=7	25%	N=53	100%	N=209
Public library services	30%	N=64	27%	N=57	8%	N=17	7%	N=15	28%	N=58	100%	N=212
Public information services	12%	N=26	41%	N=86	17%	N=37	2%	N=5	27%	N=58	100%	N=211
Cable television	10%	N=21	26%	N=56	25%	N=53	16%	N=34	22%	N=47	100%	N=211
Emergency preparedness (services that prepare the community for natural disasters or other emergency situations)	7%	N=15	31%	N=64	14%	N=29	5%	N=10	44%	N=91	100%	N=208
Preservation of natural areas such as open space, farmlands and greenbelts	7%	N=15	36%	N=76	21%	N=44	14%	N=28	22%	N=46	100%	N=210
Morrisville open space	8%	N=16	34%	N=71	33%	N=69	11%	N=23	15%	N=31	100%	N=210
Town-sponsored special events	12%	N=25	31%	N=64	17%	N=35	7%	N=15	33%	N=68	100%	N=207
Overall customer service by Morrisville employees (police, receptionists, planners, etc.)	19%	N=39	44%	N=90	12%	N=25	3%	N=6	23%	N=46	100%	N=206

The National Citizen Survey™

Table 44: Question 11

Overall, how would you rate the quality of the services provided by each of the following?	Excellent		Good		Fair		Poor		Don't know		Total	
The Town of Morrisville	20%	N=43	61%	N=131	8%	N=18	3%	N=7	8%	N=17	100%	N=215
The Federal Government	10%	N=21	38%	N=81	29%	N=63	9%	N=19	15%	N=31	100%	N=215
Wake County	11%	N=24	56%	N=122	19%	N=40	3%	N=7	11%	N=23	100%	N=215
Wake County Public School System	12%	N=26	33%	N=70	16%	N=35	7%	N=16	32%	N=68	100%	N=215

Table 45: Question 12

Please rate the following categories of Morrisville government performance:	Excellent		Good		Fair		Poor		Don't know		Total	
The value of services for the taxes paid to Morrisville	10%	N=22	45%	N=96	24%	N=52	6%	N=13	14%	N=30	100%	N=212
The overall direction that Morrisville is taking	13%	N=28	50%	N=105	16%	N=33	11%	N=24	9%	N=19	100%	N=210
The job Morrisville government does at welcoming citizen involvement	10%	N=20	46%	N=99	13%	N=28	8%	N=16	23%	N=48	100%	N=212
Overall confidence in Morrisville government	11%	N=23	50%	N=107	17%	N=36	7%	N=15	15%	N=32	100%	N=212
Generally acting in the best interest of the community	13%	N=28	47%	N=99	21%	N=44	5%	N=11	14%	N=29	100%	N=212
Being honest	14%	N=29	41%	N=86	18%	N=38	4%	N=9	23%	N=50	100%	N=212
Treating all residents fairly	16%	N=35	44%	N=93	16%	N=34	4%	N=9	19%	N=41	100%	N=212

Table 46: Question 13

Please rate how important, if at all, you think it is for the Morrisville community to focus on each of the following in the coming two years:	Essential		Very important		Somewhat important		Not at all important		Total	
Overall feeling of safety in Morrisville	55%	N=115	32%	N=67	11%	N=22	3%	N=6	100%	N=211
Overall ease of getting to the places you usually have to visit	50%	N=106	38%	N=80	11%	N=24	1%	N=3	100%	N=212
Quality of overall natural environment in Morrisville	45%	N=95	43%	N=91	12%	N=25	0%	N=0	100%	N=211
Overall "built environment" of Morrisville (including overall design, buildings, parks and transportation systems)	40%	N=84	41%	N=86	17%	N=35	3%	N=7	100%	N=212
Health and wellness opportunities in Morrisville	23%	N=48	46%	N=97	29%	N=62	2%	N=5	100%	N=212
Overall opportunities for education and enrichment	33%	N=69	36%	N=76	29%	N=60	2%	N=4	100%	N=209
Overall economic health of Morrisville	42%	N=87	49%	N=103	9%	N=19	0%	N=0	100%	N=210
Sense of community	34%	N=73	39%	N=84	24%	N=50	3%	N=6	100%	N=212

The National Citizen Survey™

Table 47: Question 14

Planning for large capital investment projects can represent a challenge in aligning resources effectively to the needs valued by the community. To better gauge community support to plan for capital spending, please indicate how important, if at all, each of the following projects and issues will be for the Town to address over the next five years:	Essential		Very important		Somewhat important		Not at all important		Don't know		Total	
Cultural/Historical improvements	12%	N=26	26%	N=56	41%	N=88	16%	N=34	4%	N=9	100%	N=212
Environmental/Stormwater improvements	23%	N=49	44%	N=92	27%	N=57	2%	N=4	4%	N=9	100%	N=212
Parks/Recreational improvements	28%	N=60	45%	N=97	21%	N=45	4%	N=9	1%	N=3	100%	N=213
Bicycle/Pedestrian improvements	29%	N=63	35%	N=75	26%	N=56	7%	N=16	2%	N=4	100%	N=213
Public facility improvements	17%	N=36	36%	N=77	36%	N=76	5%	N=10	6%	N=13	100%	N=211
Public safety improvements	29%	N=62	39%	N=83	22%	N=48	5%	N=10	4%	N=9	100%	N=212
Roadway/Transportation improvements	59%	N=126	28%	N=61	10%	N=21	1%	N=3	1%	N=3	100%	N=213
Town Center/Main Street implementation	22%	N=48	25%	N=53	32%	N=68	16%	N=33	5%	N=11	100%	N=213
Other	44%	N=35	15%	N=12	1%	N=0	3%	N=2	38%	N=30	100%	N=79

Table 48: Question 15

The town operating budget does not have the capacity to pay for significant capital improvements without issuing debt. A tax rate increase is generally needed to pay debt service payments. Please indicate to what extent you would support or oppose a tax rate increase to fund each of the following capital investment projects:	Strongly support		Somewhat support		Somewhat oppose		Strongly oppose		Total	
Cultural/Historical improvements	7%	N=14	34%	N=72	33%	N=70	25%	N=53	100%	N=210
Environmental/Stormwater improvements	22%	N=46	53%	N=112	19%	N=39	6%	N=12	100%	N=210
Parks/Recreational improvements	25%	N=52	56%	N=118	13%	N=27	7%	N=14	100%	N=211
Bicycle/Pedestrian improvements	22%	N=47	48%	N=101	21%	N=44	9%	N=19	100%	N=211
Public facility improvements	14%	N=29	54%	N=113	25%	N=52	8%	N=17	100%	N=210
Public safety improvements	32%	N=67	47%	N=99	16%	N=34	5%	N=11	100%	N=210
Roadway/Transportation improvements	52%	N=110	31%	N=65	9%	N=19	8%	N=18	100%	N=212
Town Center/Main Street implementation	18%	N=37	30%	N=61	29%	N=59	24%	N=48	100%	N=205
Other	35%	N=16	22%	N=10	16%	N=8	26%	N=12	100%	N=46

Table 49: Question 16

The majority of traffic issues in Morrisville occur on State-owned roads (NC54, Morrisville-Carpenter Road, Aviation Parkway, etc.). Typically State dollars fund any improvements on these roads, but may take many years to be prioritized for construction. Would you support using Town funds to improve State-owned roadways?	Percent	Number
Strongly support	48%	N=103
Somewhat support	34%	N=73
Somewhat oppose	8%	N=17
Strongly oppose	9%	N=20
Total	100%	N=213

The National Citizen Survey™

Table 50: Question D1

How often, if at all, do you do each of the following, considering all of the times you could?	Never		Rarely		Sometimes		Usually		Always		Total	
Recycle at home	7%	N=14	6%	N=13	10%	N=22	22%	N=46	55%	N=117	100%	N=212
Purchase goods or services from a business located in Morrisville	0%	N=0	1%	N=3	24%	N=50	48%	N=101	26%	N=55	100%	N=209
Eat at least 5 portions of fruits and vegetables a day	1%	N=2	9%	N=19	37%	N=77	37%	N=79	16%	N=34	100%	N=211
Participate in moderate or vigorous physical activity	4%	N=8	12%	N=26	37%	N=78	33%	N=70	14%	N=29	100%	N=211
Read or watch local news (via television, paper, computer, etc.)	5%	N=11	12%	N=25	24%	N=51	27%	N=56	32%	N=69	100%	N=212
Vote in local elections	19%	N=38	5%	N=10	14%	N=28	15%	N=31	47%	N=97	100%	N=205

Table 51: Question D2

Would you say that in general your health is:	Percent	Number
Excellent	26%	N=54
Very good	42%	N=89
Good	27%	N=57
Fair	3%	N=7
Poor	1%	N=3
Total	100%	N=211

Table 52: Question D3

What impact, if any, do you think the economy will have on your family income in the next 6 months? Do you think the impact will be	Percent	Number
Very positive	9%	N=20
Somewhat positive	38%	N=80
Neutral	41%	N=86
Somewhat negative	11%	N=23
Very negative	1%	N=2
Total	100%	N=211

Table 53: Question D4

What is your employment status?	Percent	Number
Working full time for pay	77%	N=161
Working part time for pay	6%	N=12
Unemployed, looking for paid work	6%	N=14
Unemployed, not looking for paid work	4%	N=8
Fully retired	7%	N=15
Total	100%	N=209

The National Citizen Survey™

Table 54: Question D5

Do you work inside the boundaries of Morrisville?	Percent	Number
Yes, outside the home	28%	N=58
Yes, from home	10%	N=20
No	62%	N=129
Total	100%	N=207

Table 55: Question D6

How many years have you lived in Morrisville?	Percent	Number
Less than 2 years	39%	N=83
2 to 5 years	27%	N=56
6 to 10 years	18%	N=39
11 to 20 years	15%	N=31
More than 20 years	1%	N=2
Total	100%	N=211

Table 56: Question D7

Which best describes the building you live in?	Percent	Number
One family house detached from any other houses	38%	N=80
Building with two or more homes (duplex, townhome, apartment or condominium)	60%	N=127
Mobile home	0%	N=0
Other	2%	N=4
Total	100%	N=211

Table 57: Question D8

Is this house, apartment or mobile home...	Percent	Number
Rented	51%	N=108
Owned	49%	N=103
Total	100%	N=211

Table 58: Question D9

About how much is your monthly housing cost for the place you live (including rent, mortgage payment, property tax, property insurance and homeowners' association (HOA) fees)?	Percent	Number
Less than \$300 per month	3%	N=6
\$300 to \$599 per month	4%	N=8
\$600 to \$999 per month	26%	N=55
\$1,000 to \$1,499 per month	40%	N=83
\$1,500 to \$2,499 per month	19%	N=39
\$2,500 or more per month	9%	N=19
Total	100%	N=210

The National Citizen Survey™

Table 59: Question D10

Do any children 17 or under live in your household?	Percent	Number
No	52%	N=110
Yes	48%	N=102
Total	100%	N=212

Table 60: Question D11

Are you or any other members of your household aged 65 or older?	Percent	Number
No	87%	N=184
Yes	13%	N=28
Total	100%	N=212

Table 61: Question D12

How much do you anticipate your household's total income before taxes will be for the current year? (Please include in your total income money from all sources for all persons living in your household.)	Percent	Number
Less than \$25,000	8%	N=16
\$25,000 to \$49,999	14%	N=29
\$50,000 to \$99,999	29%	N=61
\$100,000 to \$149,999	28%	N=59
\$150,000 or more	21%	N=43
Total	100%	N=207

Table 62: Question D13

Are you Spanish, Hispanic or Latino?	Percent	Number
No, not Spanish, Hispanic or Latino	94%	N=200
Yes, I consider myself to be Spanish, Hispanic or Latino	6%	N=12
Total	100%	N=211

Table 63: Question D14

What is your race? (Mark one or more races to indicate what race(s) you consider yourself to be.)	Percent	Number
American Indian or Alaskan Native	3%	N=6
Asian, Asian Indian or Pacific Islander	29%	N=60
Black or African American	8%	N=17
White	60%	N=125
Other	2%	N=5

Total may exceed 100% as respondents could select more than one option.

The National Citizen Survey™

Table 64: Question D15

In which category is your age?	Percent	Number
18 to 24 years	4%	N=9
25 to 34 years	35%	N=74
35 to 44 years	23%	N=49
45 to 54 years	21%	N=44
55 to 64 years	9%	N=19
65 to 74 years	5%	N=10
75 years or older	3%	N=6
Total	100%	N=210

Table 65: Question D16

What is your sex?	Percent	Number
Female	52%	N=108
Male	48%	N=101
Total	100%	N=209

Table 66: Question D17

Do you consider a cell phone or landline your primary telephone number?	Percent	Number
Cell	70%	N=149
Land line	16%	N=34
Both	14%	N=29
Total	100%	N=212

Appendix B: Benchmark Comparisons

Comparison Data

NRC's database of comparative resident opinion is comprised of resident perspectives gathered in surveys from over 500 communities whose residents evaluated the same kinds of topics on The National Citizen Survey™. The comparison evaluations are from the most recent survey completed in each community; most communities conduct surveys every year or in alternating years. NRC adds the latest results quickly upon survey completion, keeping the benchmark data fresh and relevant. The communities in the database represent a wide geographic and population range. The Town of Morrisville chose to have comparisons made to the entire database.

Interpreting the Results

Ratings are compared when there are at least five communities in which a similar question was asked. Where comparisons are available, four columns are provided in the table. The first column is Morrisville's "percent positive." The percent positive is the combination of the top two most positive response options (i.e., "excellent" and "good," "very safe" and "somewhat safe," "essential" and "very important," etc.), or, in the case of resident behaviors/participation, the percent positive represents the proportion of respondents indicating "yes" or participating in an activity at least once a month. The second column is the rank assigned to Morrisville's rating among communities where a similar question was asked. The third column is the number of communities that asked a similar question. The final column shows the comparison of Morrisville's rating to the benchmark.

In that final column, Morrisville's results are noted as being "higher" than the benchmark, "lower" than the benchmark or "similar" to the benchmark, meaning that the average rating given by Morrisville residents is statistically similar to or different (greater or lesser) than the benchmark. More extreme differences are noted as "much higher" or "much lower."

Benchmark Database Characteristics	
Region	Percent
New England	3%
Middle Atlantic	5%
East North Central	15%
West North Central	13%
South Atlantic	22%
East South Central	3%
West South Central	7%
Mountain	16%
Pacific	16%
Population	Percent
Less than 10,000	10%
10,000 to 24,999	22%
25,000 to 49,999	23%
50,000 to 99,999	22%
100,000 or more	23%

National Benchmark Comparisons

Table 67: Community Characteristics General

	Percent positive	Rank	Number of communities in comparison	Comparison to benchmark
The overall quality of life in Morrisville	90%	171	583	Similar
Overall image or reputation of Morrisville	85%	105	387	Higher
Morrisville as a place to live	94%	133	534	Similar
Your neighborhood as a place to live	83%	128	385	Similar
Morrisville as a place to raise children	87%	131	479	Similar
Morrisville as a place to retire	66%	197	450	Similar
Overall appearance of Morrisville	80%	145	449	Similar

Table 68: Community Characteristics by Facet

		Percent positive	Rank	Number of communities in comparison	Comparison to benchmark
Safety	Overall feeling of safety in Morrisville	91%	66	237	Similar
	In your neighborhood during the day	95%	147	429	Similar
	In Morrisville's downtown/commercial area during the day	96%	62	362	Similar
	Overall ease of getting to the places you usually have to visit	65%	72	106	Similar
Mobility	Availability of paths and walking trails	56%	154	286	Similar
	Ease of walking in Morrisville	55%	200	349	Similar
	Ease of travel by bicycle in Morrisville	38%	263	353	Similar
	Ease of travel by public transportation in Morrisville	13%	116	120	Much lower
	Ease of travel by car in Morrisville	55%	251	358	Similar
	Ease of public parking	74%	12	84	Higher
	Traffic flow on major streets	31%	316	352	Lower
	Quality of overall natural environment in Morrisville	80%	117	262	Similar
Natural Environment	Cleanliness of Morrisville	89%	73	258	Similar
	Air quality	85%	59	281	Similar
	Overall "built environment" of Morrisville (including overall design, buildings, parks and transportation systems)	51%	68	101	Similar
Built Environment	Overall quality of new development in Morrisville	60%	129	316	Similar
	Availability of affordable quality housing	60%	75	380	Higher
	Variety of housing options	64%	75	256	Similar
	Public places where people want to spend time	63%	57	95	Similar
	Overall economic health of Morrisville	84%	22	106	Higher
	Vibrant downtown/commercial area	31%	78	92	Lower
Economy	Overall quality of business and service establishments in Morrisville	80%	47	250	Similar
	Cost of living in Morrisville	57%	20	99	Similar
	Shopping opportunities	73%	52	367	Higher
	Employment opportunities	65%	19	406	Much higher
	Morrisville as a place to visit	45%	90	115	Lower
	Morrisville as a place to work	84%	26	404	Higher
	Health and wellness opportunities in Morrisville	66%	67	102	Similar
	Availability of affordable quality mental health care	58%	32	88	Similar
	Availability of preventive health services	76%	51	205	Similar
	Availability of affordable quality health care	74%	51	297	Higher
Recreation and Wellness	Availability of affordable quality food	80%	27	233	Higher
	Recreational opportunities	61%	227	385	Similar

The National Citizen Survey™

		Percent positive	Rank	Number of communities in comparison	Comparison to benchmark
	Fitness opportunities (including exercise classes and paths or trails, etc.)	70%	56	99	Similar
	Overall opportunities for education and enrichment	67%	57	100	Similar
	Opportunities to participate in religious or spiritual events and activities	72%	148	195	Similar
	Opportunities to attend cultural/arts/music activities	42%	256	374	Similar
	Adult educational opportunities	45%	73	91	Similar
	K-12 education	80%	100	352	Similar
	Availability of affordable quality child care/preschool	69%	23	297	Higher
	Opportunities to participate in social events and activities	53%	160	238	Similar
	Neighborhoodness of Morrisville	61%	42	95	Similar
	Openness and acceptance of the community toward people of diverse backgrounds	80%	18	341	Higher
	Opportunities to participate in community matters	57%	159	251	Similar
	Opportunities to volunteer	56%	221	247	Lower

Table 69: Governance General

	Percent positive	Rank	Number of communities in comparison	Comparison to benchmark
Services provided by the Town of Morrisville	87%	139	573	Similar
Overall customer service by Morrisville employees (police, receptionists, planners, etc.)	81%	216	467	Similar
Value of services for the taxes paid to Morrisville	65%	115	505	Similar
Overall direction that Morrisville is taking	70%	106	398	Similar
Job Morrisville government does at welcoming citizen involvement	73%	46	395	Higher
Overall confidence in Morrisville government	72%	19	102	Similar
Generally acting in the best interest of the community	70%	22	101	Similar
Being honest	71%	18	98	Similar
Treating all residents fairly	75%	11	100	Higher
Services provided by the Federal Government	56%	3	312	Higher

Table 70: Governance by Facet

		Percent positive	Rank	Number of communities in comparison	Comparison to benchmark
	Police services	91%	74	623	Higher
	Fire services	95%	151	509	Similar
	Ambulance or emergency medical services	95%	133	475	Similar
	Crime prevention	80%	99	439	Similar
	Fire prevention and education	89%	63	353	Similar
	Animal control	76%	75	434	Similar
	Emergency preparedness (services that prepare the community for natural disasters or other emergency situations)	67%	134	276	Similar
	Traffic enforcement	60%	297	471	Similar
	Street repair	41%	424	593	Similar
	Street cleaning	58%	228	403	Similar
	Street lighting	59%	203	411	Similar
	Snow removal	66%	207	384	Similar
	Sidewalk maintenance	69%	63	393	Similar
	Traffic signal timing	47%	166	298	Similar

The National Citizen Survey™

		Percent positive	Rank	Number of communities in comparison	Comparison to benchmark
Natural Environment	Bus or transit services	27%	263	273	Much lower
	Garbage collection	86%	139	498	Similar
	Recycling	84%	162	447	Similar
	Yard waste pick-up	84%	91	321	Similar
	Drinking water	88%	64	418	Higher
	Preservation of natural areas such as open space, farmlands and greenbelts	56%	188	256	Similar
	Morrisville open space	49%	94	115	Similar
Built Environment	Storm drainage	74%	94	474	Similar
	Sewer services	89%	42	402	Similar
	Power (electric and/or gas) utility	86%	23	151	Similar
	Utility billing	76%	41	102	Similar
	Land use, planning and zoning	50%	164	379	Similar
	Code enforcement (weeds, abandoned buildings, etc.)	71%	54	475	Higher
	Cable television	47%	178	247	Similar
Economy	Economic development	73%	32	368	Higher
Recreation and Wellness	Town parks	80%	200	422	Similar
	Recreation programs or classes	74%	208	447	Similar
	Recreation centers or facilities	71%	176	340	Similar
	Health services	77%	75	247	Similar
	Town-sponsored special events	64%	71	108	Similar
Education and Enrichment	Public library services	79%	278	457	Similar
Community Engagement	Public information services	73%	128	365	Similar

Table 71: Participation General

	Percent positive	Rank	Number of communities in comparison	Comparison to benchmark
Sense of community	63%	199	386	Similar
Recommend living in Morrisville to someone who asks	93%	82	261	Similar
Remain in Morrisville for the next five years	82%	165	258	Similar
Contacted Morrisville (in-person, phone, email or web) for help or information	33%	349	373	Lower

Table 72: Participation by Facet

		Percent positive	Rank	Number of communities in comparison	Comparison to benchmark
Safety	Stocked supplies in preparation for an emergency	43%	28	88	Similar
	Did NOT report a crime to the police	90%	3	97	Higher
	Household member was NOT a victim of a crime	93%	40	324	Similar
	Used bus, rail, subway or other public transportation instead of driving	3%	79	80	Much lower
Mobility	Carpooled with other adults or children instead of driving alone	26%	94	94	Lower
	Walked or biked instead of driving	48%	67	97	Similar
	Made efforts to conserve water	84%	39	90	Similar
Natural Environment	Made efforts to make your home more energy efficient	81%	16	91	Similar
	Recycle at home	87%	145	299	Similar

The National Citizen Survey™

		Percent positive	Rank	Number of communities in comparison	Comparison to benchmark
Built Environment	Did NOT observe a code violation or other hazard in Morrisville	75%	4	91	Much higher
	NOT experiencing housing costs stress	78%	25	237	Higher
Economy	Purchase goods or services from a business located in Morrisville	99%	14	94	Similar
	Economy will have positive impact on income	47%	3	306	Much higher
	Work inside boundaries of Morrisville	38%	51	94	Similar
Recreation and Wellness	Used Morrisville recreation centers or their services	61%	85	272	Similar
	Visited a neighborhood park or Town park	81%	237	324	Similar
	Eat at least 5 portions of fruits and vegetables a day	90%	6	91	Similar
	Participate in moderate or vigorous physical activity	84%	49	92	Similar
	In very good to excellent health	68%	29	93	Similar
Education and Enrichment	Used Morrisville public libraries or their services	59%	233	281	Similar
	Participated in religious or spiritual activities in Morrisville	34%	162	183	Lower
	Attended Town-sponsored event	38%	86	95	Lower
Community Engagement	Campaigned or advocated for an issue, cause or candidate	16%	77	88	Similar
	Contacted Morrisville elected officials (in-person, phone, email or web) to express your opinion	11%	85	93	Similar
	Volunteered your time to some group/activity in Morrisville	19%	307	313	Much lower
	Participated in a club	11%	207	209	Lower
	Talked to or visited with your immediate neighbors	85%	77	94	Similar
	Done a favor for a neighbor	68%	89	90	Lower
	Attended a local public meeting	12%	313	317	Lower
	Watched (online or on television) a local public meeting	6%	246	246	Much lower
	Read or watch local news (via television, paper, computer, etc.)	83%	79	93	Similar
	Vote in local elections	76%	169	316	Similar

Communities included in national comparisons

The communities included in Morrisville's comparisons are listed on the following pages along with their population according to the 2010 Census.

Abilene city, KS..... 6,844
Adams County, CO.....441,603
Addison village, IL..... 36,942
Agoura Hills city, CA..... 20,330
Airway Heights city, WA..... 6,114
Akron city, OH.....199,110
Alamogordo city, NM..... 30,403
Albany city, GA..... 77,434
Albany city, OR..... 50,158
Albemarle County, VA..... 98,970
Albert Lea city, MN..... 18,016
Albuquerque city, NM.....545,852
Algonquin village, IL..... 30,046
Aliso Viejo city, CA..... 47,823
Alpharetta city, GA..... 57,551
Altamonte Springs city, FL..... 41,496

Altoona city, IA..... 14,541
Ames city, IA..... 58,965
Andover CDP, MA..... 8,762
Ankeny city, IA..... 45,582
Ann Arbor city, MI.....113,934
Annapolis city, MD..... 38,394
Antioch city, CA.....102,372
Apple Valley town, CA..... 69,135
Appleton city, WI..... 72,623
Arapahoe County, CO.....572,003
Arcadia city, CA..... 56,364
Archuleta County, CO..... 12,084
Arkansas City city, AR..... 366
Arkansas City city, KS..... 12,415
Arlington city, TX.....365,438
Arlington County, VA.....207,627

The National Citizen Survey™

Arvada city, CO.....	106,433	Brookline CDP, MA.....	58,732
Asheville city, NC.....	83,393	Brookline town, NH.....	4,991
Ashland city, KY.....	21,684	Broomfield city, CO.....	55,889
Ashland city, OR.....	20,078	Broward County, FL.....	1,748,066
Ashland County, WI.....	16,157	Brown Deer village, WI.....	11,999
Ashland town, VA.....	7,225	Brownsburg town, IN.....	21,285
Aspen city, CO.....	6,658	Bryan city, TX.....	76,201
Atlanta city, GA.....	420,003	Burien city, WA.....	33,313
Auburn city, AL.....	53,380	Burleson city, TX.....	36,690
Auburn city, WA.....	70,180	Burlingame city, CA.....	28,806
Augusta CCD, GA.....	134,777	Burlington CDP, MA.....	24,498
Aurora city, CO.....	325,078	Cabarrus County, NC.....	178,011
Austin city, TX.....	790,390	Cambridge city, MA.....	105,162
Avondale city, AZ.....	76,238	Canandaigua city, NY.....	10,545
Bainbridge Island city, WA.....	23,025	Canton city, SD.....	3,057
Ballwin city, MO.....	30,404	Cape Coral city, FL.....	154,305
Baltimore city, MD.....	620,961	Cape Girardeau city, MO.....	37,941
Baltimore County, MD.....	805,029	Capitola city, CA.....	9,918
Barnstable Town city, MA.....	45,193	Carlisle borough, PA.....	18,682
Batavia city, IL.....	26,045	Carlsbad city, CA.....	105,328
Battle Creek city, MI.....	52,347	Carrollton city, TX.....	119,097
Bay City city, MI.....	34,932	Carson City, NV.....	55,274
Baytown city, TX.....	71,802	Cartersville city, GA.....	19,731
Bedford city, TX.....	46,979	Carver County, MN.....	91,042
Bedford County, VA.....	68,676	Cary town, NC.....	135,234
Bedford town, MA.....	13,320	Casa Grande city, AZ.....	48,571
Beekman town, NY.....	14,621	Casper city, WY.....	55,316
Belleair Beach city, FL.....	1,560	Castine town, ME.....	1,366
Bellevue city, WA.....	122,363	Castle Pines North city, CO.....	10,360
Bellflower city, CA.....	76,616	Castle Rock town, CO.....	48,231
Bellingham city, WA.....	80,885	Cedar Creek village, NE.....	390
Beltrami County, MN.....	44,442	Cedar Falls city, IA.....	39,260
Benbrook city, TX.....	21,234	Cedar Rapids city, IA.....	126,326
Bend city, OR.....	76,639	Centennial city, CO.....	100,377
Benicia city, CA.....	26,997	Centralia city, IL.....	13,032
Bettendorf city, IA.....	33,217	Cerritos city, CA.....	49,041
Billings city, MT.....	104,170	Chambersburg borough, PA.....	20,268
Biloxi city, MS.....	44,054	Chandler city, AZ.....	236,123
Blacksburg town, VA.....	42,620	Chanhassen city, MN.....	22,952
Blaine city, MN.....	57,186	Chanute city, KS.....	9,119
Bloomfield city, NM.....	8,112	Chapel Hill town, NC.....	57,233
Bloomfield Hills city, MI.....	3,869	Charlotte city, NC.....	731,424
Bloomington city, IL.....	76,610	Charlotte County, FL.....	159,978
Bloomington city, MN.....	82,893	Charlottesville city, VA.....	43,475
Blue Ash city, OH.....	12,114	Chattanooga city, TN.....	167,674
Blue Earth city, MN.....	3,353	Chesapeake city, VA.....	222,209
Blue Springs city, MO.....	52,575	Chesterfield County, VA.....	316,236
Boca Raton city, FL.....	84,392	Cheyenne city, WY.....	59,466
Boise City city, ID.....	205,671	Chippewa Falls city, WI.....	13,661
Bonita Springs city, FL.....	43,914	Chittenden County, VT.....	156,545
Boone County, KY.....	118,811	Chula Vista city, CA.....	243,916
Boonville city, MO.....	8,319	Cincinnati city, OH.....	296,943
Boston city, MA.....	617,594	Citrus Heights city, CA.....	83,301
Botetourt County, VA.....	33,148	Clackamas County, OR.....	375,992
Bothell city, WA.....	33,505	Claremont city, CA.....	34,926
Boulder city, CO.....	97,385	Clarendon Hills village, IL.....	8,427
Boulder County, CO.....	294,567	Clark County, WA.....	425,363
Bowling Green city, KY.....	58,067	Clarke County, IA.....	9,286
Bozeman city, MT.....	37,280	Clay County, MO.....	221,939
Bradenton city, FL.....	49,546	Clayton city, MO.....	15,939
Brea city, CA.....	39,282	Clearwater city, FL.....	107,685
Breckenridge town, CO.....	4,540	Cleveland Heights city, OH.....	46,121
Brentwood city, MO.....	8,055	Clive city, IA.....	15,447
Brentwood city, TN.....	37,060	Clovis city, CA.....	95,631
Brevard County, FL.....	543,376	Coconino County, AZ.....	134,421
Brighton city, CO.....	33,352	College Park city, MD.....	30,413
Brisbane city, CA.....	4,282	College Station city, TX.....	93,857
Bristol city, TN.....	26,702	Colleyville city, TX.....	22,807
Broken Arrow city, OK.....	98,850	Collier County, FL.....	321,520
Brookfield city, WI.....	37,920	Collinsville city, IL.....	25,579

The National Citizen Survey™

Colorado Springs city, CO	416,427	Dublin city, CA	46,036
Columbia city, MO	108,500	Dublin city, OH	41,751
Columbia city, SC	129,272	Duluth city, MN	86,265
Columbus city, GA	189,885	Duncanville city, TX	38,524
Columbus city, OH	787,033	Durango city, CO	16,887
Columbus city, WI	4,991	Durham city, NC	228,330
Commerce City city, CO	45,913	Duval County, FL	864,263
Concord city, CA	122,067	Eagan city, MN	64,206
Concord city, NC	79,066	Eagle town, CO	6,508
Concord town, MA	17,668	East Baton Rouge Parish, LA	440,171
Conyers city, GA	15,195	East Grand Forks city, MN	8,601
Cookeville city, TN	30,435	East Lansing city, MI	48,579
Coon Rapids city, MN	61,476	East Merrimack CDP, NH	4,197
Cooper City city, FL	28,547	East Providence city, RI	47,037
Coppell city, TX	38,659	Eau Claire city, WI	65,883
Copperas Cove city, TX	32,032	Ebensburg borough, PA	3,351
Coral Springs city, FL	121,096	Eden Prairie city, MN	60,797
Coronado city, CA	18,912	Edgerton city, KS	1,671
Corpus Christi city, TX	305,215	Edina city, MN	47,941
Corvallis city, OR	54,462	Edmond city, OK	81,405
Coventry Lake CDP, CT	2,990	Edmonds city, WA	39,709
Craig city, CO	9,464	El Cerrito city, CA	23,549
Cranberry township, PA	28,098	El Dorado County, CA	181,058
Crested Butte town, CO	1,487	El Paso city, TX	649,121
Creve Coeur city, MO	17,833	Elk Grove city, CA	153,015
Cross Roads town, TX	1,563	Elk River city, MN	22,974
Crystal Lake city, IL	40,743	Elko New Market city, MN	4,110
Cumberland County, PA	235,406	Ellisville city, MO	9,133
Cupertino city, CA	58,302	Elmhurst city, IL	44,121
Cypress city, CA	47,802	Encinitas city, CA	59,518
Dade City city, FL	6,437	Englewood city, CO	30,255
Dakota County, MN	398,552	Ephrata borough, PA	13,394
Dallas city, OR	14,583	Erie County, PA	280,566
Dallas city, TX	1,197,816	Erie town, CO	18,135
Dania Beach city, FL	29,639	Escambia County, FL	297,619
Danville city, KY	16,218	Escanaba city, MI	12,616
Dardenne Prairie city, MO	11,494	Escondido city, CA	143,911
Davenport city, IA	99,685	Estes Park town, CO	5,858
Davidson town, NC	10,944	Eugene city, OR	156,185
Daviess County, KY	96,656	Eustis city, FL	18,558
Davis city, CA	65,622	Evanston city, IL	74,486
Dayton city, OH	141,527	Fairborn city, OH	32,352
Daytona Beach city, FL	61,005	Fairview town, TX	7,248
De Pere city, WI	23,800	Fairway city, KS	3,882
Decatur city, GA	19,335	Farmington city, NM	45,877
Decatur city, IL	76,122	Farmington city, UT	18,275
Deerfield Beach city, FL	75,018	Farmington Hills city, MI	79,740
DeKalb city, IL	43,862	Fayetteville city, AR	73,580
Del Mar city, CA	4,161	Fayetteville city, NC	200,564
Delaware city, OH	34,753	Federal Way city, WA	89,306
Delray Beach city, FL	60,522	Fishers town, IN	76,794
Denison city, TX	22,682	Flagstaff city, AZ	65,870
Denton city, TX	113,383	Flower Mound town, TX	64,669
Denver city, CO	600,158	Flushing city, MI	8,389
Derby city, KS	22,158	Forest Grove city, OR	21,083
Des Moines city, IA	203,433	Fort Collins city, CO	143,986
Des Moines County, IA	40,325	Fort Dodge city, IA	25,206
Des Peres city, MO	8,373	Fort Lauderdale city, FL	165,521
DeSoto city, TX	49,047	Fort Madison city, IA	11,051
Destin city, FL	12,305	Fort Smith city, AR	86,209
Detroit city, MI	713,777	Fort Wayne city, IN	253,691
Dewey-Humboldt town, AZ	3,894	Fort Worth city, TX	741,206
Dillon town, CO	904	Fountain Hills town, AZ	22,489
Dorchester County, MD	32,618	Franklin city, TN	62,487
Dothan city, AL	65,496	Fredericksburg city, VA	24,286
Douglas County, CO	285,465	Freeport CDP, ME	1,485
Douglas County, GA	132,403	Freeport city, IL	25,638
Dover city, DE	36,047	Fremont city, CA	214,089
Dover city, NH	29,987	Fridley city, MN	27,208
Downers Grove village, IL	47,833	Friendswood city, TX	35,805

The National Citizen Survey™

Frisco town, CO	2,683	Holden town, MA	17,346
Fruita city, CO.....	12,646	Holland city, MI.....	33,051
Gahanna city, OH.....	33,248	Homer city, AK.....	5,003
Gainesville city, FL	124,354	Homewood village, IL.....	19,323
Gaithersburg city, MD.....	59,933	Honolulu County, HI.....	953,207
Galt city, CA.....	23,647	Hooksett town, NH.....	13,451
Galveston city, TX	47,743	Hopewell city, VA.....	22,591
Garden City city, KS	26,658	Hopkins city, MN.....	17,591
Garden Grove city, CA	170,883	Hopkinton town, MA.....	14,925
Gardner city, KS.....	19,123	Hoquiam city, WA	8,726
Garland city, TX.....	226,876	Hot Springs city, AR	35,193
Gary city, IN	80,294	Hot Sulphur Springs town, CO	663
Genesee County, NY	60,079	Houston city, TX	2,099,451
Geneva city, NY	13,261	Howard City village, MI	1,808
Georgetown city, TX.....	47,400	Howell city, MI.....	9,489
Georgetown town, CO	1,034	Huber Heights city, OH.....	38,101
Germantown city, TN	38,844	Hudson city, OH.....	22,262
Gig Harbor city, WA	7,126	Hudson town, CO.....	2,356
Gilbert town, AZ.....	208,453	Hudson town, NC.....	3,776
Gillette city, WY	29,087	Hudsonville city, MI.....	7,116
Gilroy city, CA	48,821	Huntersville town, NC.....	46,773
Gladstone city, MI.....	4,973	Hurst city, TX.....	37,337
Glendora city, CA	50,073	Hutchinson city, MN	14,178
Globe city, AZ	7,532	Hutto city, TX	14,698
Golden Valley city, MN.....	20,371	Hyattsville city, MD	17,557
Goodyear city, AZ	65,275	Independence city, MO.....	116,830
Grafton village, WI.....	11,459	Indian Trail town, NC	33,518
Grand Blanc city, MI.....	8,276	Indianola city, IA	14,782
Grand County, CO.....	14,843	Iowa City city, IA	67,862
Grand Forks city, ND	52,838	Iowa County, IA.....	16,355
Grand Island city, NE	48,520	Irving city, TX.....	216,290
Grand Junction city, CO	58,566	Issaquah city, WA.....	30,434
Grand Prairie city, TX	175,396	Jackson County, MI.....	160,248
Grand Rapids city, MI.....	188,040	Jackson County, OR	203,206
Grandview city, MO.....	24,475	Jacksonville city, FL.....	821,784
Grass Valley city, CA	12,860	James City County, VA	67,009
Greeley city, CO.....	92,889	Janesville city, WI.....	63,575
Green Valley CDP, AZ.....	21,391	Jefferson City city, MO	43,079
Greenbelt city, MD	23,068	Jefferson County, CO	534,543
Greensboro city, NC	269,666	Jefferson County, NY.....	116,229
Greenville city, SC	58,409	Jefferson Parish, LA	432,552
Greenwood Village city, CO.....	13,925	Jerome city, ID	10,890
Greer city, SC	25,515	Johnson City city, TN.....	63,152
Gresham city, OR.....	105,594	Johnson County, KS	544,179
Guilford County, NC	488,406	Johnston city, IA	17,278
Gulf Shores city, AL.....	9,741	Joplin city, MO.....	50,150
Gunnison County, CO	15,324	Jupiter town, FL.....	55,156
Gurnee village, IL.....	31,295	Kalamazoo city, MI.....	74,262
Hackensack city, NJ	43,010	Kannapolis city, NC	42,625
Hailey city, ID	7,960	Kansas City city, KS.....	145,786
Haines Borough, AK	2,508	Kansas City city, MO.....	459,787
Hallandale Beach city, FL.....	37,113	Kearney city, NE	30,787
Hamilton city, OH.....	62,477	Keizer city, OR	36,478
Hampton city, VA.....	137,436	Kenmore city, WA	20,460
Hanover County, VA.....	99,863	Kennedale city, TX	6,763
Harrisonburg city, VA	48,914	Kennett Square borough, PA.....	6,072
Harrisonville city, MO	10,019	Kenosha city, WI.....	99,218
Hartford city, CT	124,775	Kent city, WA.....	92,411
Hayward city, CA	144,186	Kentwood city, MI.....	48,707
Henderson city, NV	257,729	Kettering city, OH	56,163
Hercules city, CA.....	24,060	King County, WA.....	1,931,249
Hermiston city, OR.....	16,745	Kirkland city, WA.....	48,787
Herndon town, VA.....	23,292	Kirkwood city, MO.....	27,540
Hickory city, NC	40,010	Kissimmee city, FL	59,682
High Point city, NC	104,371	Kitsap County, WA	251,133
Highland city, CA	53,104	Knightdale town, NC	11,401
Highland Park city, IL	29,763	Knoxville city, TN	178,874
Highlands Ranch CDP, CO	96,713	Kutztown borough, PA.....	5,012
Hillsborough County, FL	1,229,226	La Mesa city, CA	57,065
Hillsborough town, NC.....	6,087	La Plata town, MD.....	8,753

The National Citizen Survey™

La Porte city, TX	33,800	Marin County, CA	252,409
La Vista city, NE	15,758	Marion County, IA	33,309
Lafayette city, CO	24,453	Marion County, IN	903,393
Laguna Beach city, CA	22,723	Marquette County, WI	15,404
Laguna Hills city, CA	30,344	Maryland Heights city, MO	27,472
Laguna Niguel city, CA	62,979	Marysville city, WA	60,020
Lake Oswego city, OR	36,619	Maryville city, MO	11,972
Lake Zurich village, IL	19,631	Matthews town, NC	27,198
Lakeville city, MN	55,954	Maui County, HI	154,834
Lakewood city, CA	80,048	Mauldin city, SC	22,889
Lakewood city, CO	142,980	Mayer city, MN	1,749
Lane County, OR	351,715	McAllen city, TX	129,877
Laramie city, WY	30,816	McDonough city, GA	22,084
Larimer County, CO	299,630	McKinney city, TX	131,117
Las Cruces city, NM	97,618	McMinnville city, OR	32,187
Las Vegas city, NV	583,756	Mecklenburg County, NC	919,628
Lawrence city, KS	87,643	Medford city, OR	74,907
League City city, TX	83,560	Medford Lakes borough, NJ	4,146
Lebanon city, NH	13,151	Medina city, MN	4,892
Lebanon city, OH	20,033	Melbourne city, FL	76,068
Lee County, FL	618,754	Menlo Park city, CA	32,026
Lee's Summit city, MO	91,364	Mercer Island city, WA	22,699
Lehi city, UT	47,407	Meridian charter township, MI	39,688
Lenexa city, KS	48,190	Meridian city, ID	75,092
Lewis County, NY	27,087	Merriam city, KS	11,003
Lewiston city, ID	31,894	Merrill city, WI	9,661
Lewiston city, ME	36,592	Mesa city, AZ	439,041
Lewisville city, TX	95,290	Mesa County, CO	146,723
Lexington city, VA	7,042	Miami Beach city, FL	87,779
Lexington-Fayette urban county, KY	295,803	Miami city, FL	399,457
Liberty city, MO	29,149	Miami-Dade County, FL	2,496,435
Lincoln city, NE	258,379	Midland city, MI	41,863
Lincolnwood village, IL	12,590	Milford city, DE	9,559
Lindsborg city, KS	3,458	Milledgeville city, GA	17,715
Little Rock city, AR	193,524	Milton city, GA	32,661
Littleton city, CO	41,737	Milton city, WI	5,546
Livermore city, CA	80,968	Minneapolis city, MN	382,578
Lodi city, CA	62,134	Minnetonka city, MN	49,734
Lombard village, IL	43,165	Mission city, KS	9,323
Lompoc city, CA	42,434	Mission Viejo city, CA	93,305
Lone Tree city, CO	10,218	Missoula city, MT	66,788
Long Beach city, CA	462,257	Missouri City city, TX	67,358
Longmont city, CO	86,270	Modesto city, CA	201,165
Longview city, TX	80,455	Monterey city, CA	27,810
Los Alamitos city, CA	11,449	Montgomery County, MD	971,777
Los Alamos County, NM	17,950	Montgomery County, VA	94,392
Los Angeles city, CA	3,792,621	Montpelier city, VT	7,855
Los Gatos town, CA	29,413	Montrose city, CO	19,132
Louisa County, IA	11,387	Monument town, CO	5,530
Louisville city, CO	18,376	Mooresville town, NC	32,711
Loveland city, CO	66,859	Morgan Hill city, CA	37,882
Lower Merion township, PA	57,825	Morgantown city, WV	29,660
Lower Providence township, PA	25,436	Morristown city, TN	29,137
Lubbock city, TX	229,573	Morrisville town, NC	18,576
Lufkin city, TX	35,067	Moscow city, ID	23,800
Lyme town, NH	1,716	Mount Pleasant city, TX	15,564
Lynchburg city, VA	75,568	Mountain View city, CA	74,066
Lynnwood city, WA	35,836	Mountain Village town, CO	1,320
Lynwood city, CA	69,772	Mountlake Terrace city, WA	19,909
Lyons village, IL	10,729	Multnomah County, OR	735,334
Macon city, GA	91,351	Munster town, IN	23,603
Madison city, WI	233,209	Muscataine city, IA	22,886
Manchester town, CT	58,241	Muskegon city, MI	38,401
Manheim borough, PA	4,858	Myrtle Beach city, SC	27,109
Mankato city, MN	39,309	Nacogdoches city, TX	32,996
Maple Grove city, MN	61,567	Naperville city, IL	141,853
Maple Valley city, WA	22,684	Nashville-Davidson metropolitan government (balanc	601,222
Maplewood city, MN	38,018	Needham CDP, MA	28,886
Marana town, AZ	34,961	New Braunfels city, TX	57,740
Maricopa County, AZ	3,817,117	New Brighton city, MN	21,456

The National Citizen Survey™

New Hanover County, NC	202,667	Parkland city, FL	23,962
New London city, CT	27,620	Pasadena city, CA	137,122
New Orleans city, LA	343,829	Pasadena city, TX	149,043
New Smyrna Beach city, FL	22,464	Pascagoula city, MS.....	22,392
New York city, NY	8,175,133	Pasco city, WA.....	59,781
Newberg city, OR.....	22,068	Pasco County, FL	464,697
Newport Beach city, CA	85,186	Peachtree City city, GA.....	34,364
Newport city, RI.....	24,672	Pearland city, TX.....	91,252
Newport News city, VA.....	180,719	Peoria city, AZ	154,065
Newton city, IA	15,254	Peoria city, IL	115,007
Noblesville city, IN	51,969	Peoria County, IL	186,494
Nogales city, AZ.....	20,837	Peters township, PA	21,213
Norfolk city, VA.....	242,803	Petoskey city, MI	5,670
Normal town, IL.....	52,497	Pflugerville city, TX	46,936
Norman city, OK	110,925	Phenix City city, AL	32,822
North Branch city, MN	10,125	Philadelphia city, PA	1,526,006
North Las Vegas city, NV	216,961	Phoenix city, AZ.....	1,445,632
North Palm Beach village, FL	12,015	Pickens County, SC	119,224
North Port city, FL.....	57,357	Pinal County, AZ	375,770
Northampton County, VA.....	12,389	Pinehurst village, NC	13,124
Northglenn city, CO.....	35,789	Pinellas County, FL.....	916,542
Norton Shores city, MI.....	23,994	Pinellas Park city, FL	49,079
Novato city, CA	51,904	Piqua city, OH.....	20,522
Novi city, MI.....	55,224	Pitkin County, CO.....	17,148
O'Fallon city, IL.....	28,281	Plano city, TX	259,841
O'Fallon city, MO.....	79,329	Platte City city, MO.....	4,691
Oak Park village, IL	51,878	Platte County, MO.....	89,322
Oak Ridge city, TN	29,330	Pleasanton city, CA	70,285
Oakland charter township, MI.....	16,779	Plymouth city, MN.....	70,576
Oakland Park city, FL	41,363	Pocatello city, ID.....	54,255
Oakley city, CA	35,432	Polk County, FL.....	602,095
Ocala city, FL.....	56,315	Polk County, IA.....	430,640
Ocean City town, MD.....	7,102	Polk County, MN	31,600
Ocean Shores city, WA	5,569	Pomona city, CA	149,058
Oceanside city, CA	167,086	Port Huron city, MI.....	30,184
Ocoee city, FL.....	35,579	Port Orange city, FL	56,048
Ogden city, UT.....	82,825	Port St. Lucie city, FL	164,603
Ogdensburg city, NY	11,128	Portland city, OR.....	583,776
Oklahoma City city, OK.....	579,999	Post Falls city, ID	27,574
Olathe city, KS.....	125,872	Poway city, CA.....	47,811
Old Town city, ME.....	7,840	Prescott Valley town, AZ.....	38,822
Oldsmar city, FL.....	13,591	Prince William County, VA.....	402,002
Olmsted County, MN	144,248	Prior Lake city, MN.....	22,796
Olympia city, WA	46,478	Provo city, UT	112,488
Orange County, FL	1,145,956	Pueblo city, CO	106,595
Orange village, OH.....	3,323	Purcellville town, VA.....	7,727
Orland Park village, IL	56,767	Queen Creek town, AZ	26,361
Orlando city, FL	238,300	Radford city, VA.....	16,408
Orleans Parish, LA.....	343,829	Radnor township, PA.....	31,531
Oshkosh city, WI.....	66,083	Ramsey city, MN	23,668
Otsego County, MI.....	24,164	Rancho Cordova city, CA	64,776
Ottawa County, MI.....	263,801	Rapid City city, SD	67,956
Overland Park city, KS.....	173,372	Raymore city, MO	19,206
Oviedo city, FL.....	33,342	Redding city, CA	89,861
Oxnard city, CA.....	197,899	Redmond city, WA	54,144
Ozaukee County, WI	86,395	Rehoboth Beach city, DE	1,327
Paducah city, KY.....	25,024	Reno city, NV.....	225,221
Palatine village, IL.....	68,557	Renton city, WA.....	90,927
Palm Bay city, FL	103,190	Reston CDP, VA	58,404
Palm Beach County, FL.....	1,320,134	Richfield city, MN	35,228
Palm Beach Gardens city, FL.....	48,452	Richland city, WA.....	48,058
Palm Beach town, FL.....	8,348	Richmond city, CA.....	103,701
Palm Coast city, FL.....	75,180	Richmond city, VA.....	204,214
Palm Springs city, CA	44,552	Richmond Heights city, MO.....	8,603
Palo Alto city, CA	64,403	Ridgecrest city, CA.....	27,616
Panama City city, FL.....	36,484	Rifle city, CO.....	9,172
Papillion city, NE	18,894	Rio Rancho city, NM	87,521
Park City city, UT	7,558	River Falls city, WI	15,000
Park Ridge city, IL.....	37,480	Riverdale city, UT.....	8,426
Parker town, CO	45,297	Riverside city, CA	303,871

The National Citizen Survey™

Riverside city, MO	2,937	Shawnee city, KS	62,209
Riverside village, IL	8,875	Sheboygan city, WI	49,288
Roanoke city, VA	97,032	Sheldahl city, IA	319
Roanoke County, VA	92,376	Shenandoah city, TX	2,134
Rochester city, MI	12,711	Sherman village, IL	4,148
Rochester city, NY	210,565	Shoreview city, MN	25,043
Rochester Hills city, MI	70,995	Shorewood city, MN	7,307
Rock Hill city, SC	66,154	Shorewood village, IL	15,615
Rockford city, IL	152,871	Shorewood village, WI	13,162
Rockville city, MD	61,209	Shrewsbury town, MA	35,608
Rocky Mount city, NC	57,477	Siloam Springs city, AR	15,039
Roeland Park city, KS	6,731	Silverthorne town, CO	3,887
Rogers city, MN	8,597	Simi Valley city, CA	124,237
Rolla city, MO	19,559	Sioux Center city, IA	7,048
Roselle village, IL	22,763	Sioux Falls city, SD	153,888
Roseville city, MN	33,660	Skokie village, IL	64,784
Roswell city, GA	88,346	Slater city, IA	1,489
Round Rock city, TX	99,887	Smyrna city, GA	51,271
Rowlett city, TX	56,199	Snellville city, GA	18,242
Royal Oak city, MI	57,236	Snoqualmie city, WA	10,670
Rye city, NY	15,720	Snowmass Village town, CO	2,826
Saco city, ME	18,482	Solana Beach city, CA	12,867
Sacramento County, CA	1,418,788	South Daytona city, FL	12,252
Safford city, AZ	9,566	South Gate city, CA	94,396
Sahuarita town, AZ	25,259	South Haven city, MI	4,403
Salem town, NH	28,776	South Kingstown town, RI	30,639
Salida city, CO	5,236	South Lake Tahoe city, CA	21,403
Salina city, KS	47,707	South Portland city, ME	25,002
Salt Lake City city, UT	186,440	Southborough town, MA	9,767
Sammamish city, WA	45,780	Southlake city, TX	26,575
San Anselmo town, CA	12,336	Sparks city, NV	90,264
San Antonio city, TX	1,327,407	Spokane Valley city, WA	89,755
San Bernardino County, CA	2,035,210	Spotsylvania County, VA	122,397
San Carlos city, CA	28,406	Spring Hill city, KS	5,437
San Diego city, CA	1,307,402	Springboro city, OH	17,409
San Francisco city, CA	805,235	Springfield city, MO	159,498
San Jose city, CA	945,942	Springfield city, OH	60,608
San Juan County, NM	130,044	Springfield city, OR	59,403
San Luis Obispo County, CA	269,637	Springville city, UT	29,466
San Marcos city, CA	83,781	St. Charles city, IL	32,974
San Marcos city, TX	44,894	St. Clair Shores city, MI	59,715
San Mateo city, CA	97,207	St. Cloud city, FL	35,183
San Rafael city, CA	57,713	St. Cloud city, MN	65,842
San Ramon city, CA	72,148	St. Joseph city, MO	76,780
Sandusky city, OH	25,793	St. Louis County, MN	200,226
Sandy city, UT	87,461	St. Louis Park city, MN	45,250
Sandy Springs city, GA	93,853	St. Paul city, MN	285,068
Sanford city, FL	53,570	St. Peters city, MO	52,575
Sangamon County, IL	197,465	St. Petersburg city, FL	244,769
Santa Barbara County, CA	423,895	Stafford County, VA	128,961
Santa Clarita city, CA	176,320	Stallings town, NC	13,831
Santa Fe County, NM	144,170	Starkville city, MS	23,888
Santa Monica city, CA	89,736	State College borough, PA	42,034
Santa Rosa city, CA	167,815	Staunton city, VA	23,746
Sarasota city, FL	51,917	Steamboat Springs city, CO	12,088
Sarasota County, FL	379,448	Sterling city, CO	14,777
Sault Ste. Marie city, MI	14,144	Sterling Heights city, MI	129,699
Savage city, MN	26,911	Stillwater city, OK	45,688
Savannah city, GA	136,286	Stockton city, CA	291,707
Scarborough CDP, ME	4,403	Streamwood village, IL	39,858
Schaumburg village, IL	74,227	Suamico village, WI	11,346
Scott County, MN	129,928	Sugar Grove village, IL	8,997
Scottsdale city, AZ	217,385	Sugar Land city, TX	78,817
Seaside city, CA	33,025	Summit city, NJ	21,457
SeaTac city, WA	26,909	Summit County, UT	36,324
Seattle city, WA	608,660	Sunnyvale city, CA	140,081
Sedona city, AZ	10,031	Superior city, WI	27,244
Seminole city, FL	17,233	Surprise city, AZ	117,517
Sevierville city, TN	14,807	Suwanee city, GA	15,355
Shaker Heights city, OH	28,448	Tacoma city, WA	198,397

The National Citizen Survey™

Takoma Park city, MD	16,715	Wausau city, WI	39,106
Tallahassee city, FL	181,376	Wauwatosa city, WI	46,396
Tamarac city, FL	60,427	Waverly city, IA	9,874
Taos town, NM	5,716	Weddington town, NC	9,459
Temecula city, CA	100,097	Wentzville city, MO	29,070
Tempe city, AZ	161,719	West Carrollton city, OH	13,143
Temple city, TX	66,102	West Chester borough, PA	18,461
Teton County, WY	21,294	West Des Moines city, IA	56,609
The Colony city, TX	36,328	West Hartford CDP, CT	63,268
The Woodlands CDP, TX	93,847	West Richland city, WA	11,811
Thornton city, CO	118,772	West Valley City city, UT	129,480
Thousand Oaks city, CA	126,683	Westerville city, OH	36,120
Tigard city, OR	48,035	Westlake town, TX	992
Tillamook County, OR	25,250	Westminster city, CO	106,114
Titusville city, FL	43,761	Weston town, MA	11,261
Tomball city, TX	10,753	Wethersfield CDP, CT	26,668
Torrance city, CA	145,438	Wheat Ridge city, CO	30,166
Tracy city, CA	82,922	White House city, TN	10,255
Troy city, MI	80,980	Whitewater city, WI	14,390
Tualatin city, OR	26,054	Whitewater township, MI	2,597
Tucson city, AZ	520,116	Wichita city, KS	382,368
Tulsa city, OK	391,906	Williamsburg city, VA	14,068
Tuskegee city, AL	9,865	Willingboro township, NJ	31,629
Twin Falls city, ID	44,125	Wilmette village, IL	27,087
Tyler city, TX	96,900	Wilmington city, IL	5,724
Umatilla city, OR	6,906	Wilmington city, NC	106,476
University Place city, WA	31,144	Wilsonville city, OR	19,509
Upper Arlington city, OH	33,771	Winchester city, VA	26,203
Upper Merion township, PA	28,395	Wind Point village, WI	1,723
Urbana city, IL	41,250	Windsor town, CO	18,644
Urbandale city, IA	39,463	Windsor town, CT	29,044
Vail town, CO	5,305	Winnebago County, WI	166,994
Valdez city, AK	3,976	Winnetka village, IL	12,187
Vancouver city, WA	161,791	Winston-Salem city, NC	229,617
Ventura CCD, CA	111,889	Winter Garden city, FL	34,568
Vernon town, CT	29,179	Winter Park city, FL	27,852
Vestavia Hills city, AL	34,033	Woodbury city, MN	61,961
Victoria city, TX	62,592	Woodinville city, WA	10,938
Virginia Beach city, VA	437,994	Woodland city, CA	55,468
Visalia city, CA	124,442	Woodland city, WA	5,509
Volusia County, FL	494,593	Woodridge village, IL	32,971
Wahpeton city, ND	7,766	Worcester city, MA	181,045
Wake Forest town, NC	30,117	Wrentham town, MA	10,955
Walla Walla city, WA	31,731	Wyandotte city, MI	25,883
Walnut Creek city, CA	64,173	Yakima city, WA	91,067
Walton County, FL	55,043	Yellowstone County, MT	147,972
Washington city, UT	18,761	York County, SC	226,073
Washington County, MN	238,136	York County, VA	65,464
Washoe County, NV	421,407	Yorktown town, IN	9,405
Watauga city, TX	23,497	Yuba City city, CA	64,925
Watertown city, NY	27,023	Yuma city, AZ	93,064
Waukee city, IA	13,790	Yuma County, AZ	195,751

Appendix C: Detailed Survey Methods

The National Citizen Survey (The NCS™), conducted by National Research Center, Inc., was developed to provide communities an accurate, affordable and easy way to assess and interpret resident opinion about important local topics. Standardization of common questions and survey methods provide the rigor to assure valid results, and each community has enough flexibility to construct a customized version of The NCS.

Results offer insight into residents' perspectives about the community as a whole, including local amenities, services, public trust, resident participation and other aspects of the community in order to support budgeting, land use and strategic planning and communication with residents. Resident demographic characteristics permit comparison to the Census as well as comparison of results for different subgroups of residents. The Town of Morrisville funded this research. Please contact Stephanie Smith of the Morrisville City Manager's office at ssmith@townofmorrisville.org if you have any questions about the survey.

Survey Validity

The question of survey validity has two parts: 1) how can a community be confident that the results from those who completed the questionnaire are representative of the results that would have been obtained had the survey been administered to the entire population? and 2) how closely do the perspectives recorded on the survey reflect what residents really believe or do?

To answer the first question, the best survey research practices were used for the resources spent to ensure that the results from the survey respondents reflect the opinions of residents in the entire community. These practices include:

- Using a mail-out/mail-back methodology, which typically gets a higher response rate than phone for the same dollars spent. A higher response rate lessens the worry that those who did not respond are different than those who did respond.
- Selecting households at random within the community to receive the survey to ensure that the households selected to receive the survey are representative of the larger community.
- Over-sampling multi-family housing units to improve response from hard-to-reach, lower income or younger apartment dwellers.
- Selecting the respondent within the household using an unbiased sampling procedure; in this case, the "birthday method." The cover letter included an instruction requesting that the respondent in the household be the adult (18 years old or older) who most recently had a birthday, irrespective of year of birth.
- Contacting potential respondents three times to encourage response from people who may have different opinions or habits than those who would respond with only a single prompt.
- Inviting response in a compelling manner (using appropriate letterhead/logos and a signature of a visible leader) to appeal to recipients' sense of civic responsibility.
- Providing a pre-addressed, postage-paid return envelope.
- Offering the survey in Spanish or other language when requested by a given community.
- Weighting the results to reflect the demographics of the population.

The answer to the second question about how closely the perspectives recorded on the survey reflect what residents really believe or do is more complex. Resident responses to surveys are influenced by a variety of factors. For questions about service quality, residents' expectations for service quality play a role as well as the "objective" quality of the service provided, the way the resident perceives the entire community (that is, the context in which the service is provided), the scale on which the resident is asked to record his or her opinion and, of course, the opinion, itself, that a resident holds about the service. Similarly a resident's report of certain behaviors is colored by what he or she believes is the socially desirable response (e.g., reporting tolerant behaviors toward "oppressed groups," likelihood of voting for a tax increase for services to poor people, use of alternative modes of travel to work besides the single occupancy vehicle), his or her memory of the actual behavior (if it is not a question speculating about future actions, like a vote), his or her confidence that he or she can be honest without suffering any negative consequences (thus the need for anonymity) as well as the actual behavior itself.

How closely survey results come to recording the way a person really feels or behaves often is measured by the coincidence of reported behavior with observed current behavior (e.g., driving habits), reported intentions to behave with observed future behavior (e.g., voting choices) or reported opinions about current community quality

with objective characteristics of the community (e.g., feelings of safety correlated with rates of crime). There is a body of scientific literature that has investigated the relationship between reported behaviors and actual behaviors. Well-conducted surveys, by and large, do capture true respondent behaviors or intentions to act with great accuracy. Predictions of voting outcomes tend to be quite accurate using survey research, as do reported behaviors that are not about highly sensitive issues (e.g., family abuse or other illegal or morally sanctioned activities). For self-reports about highly sensitive issues, statistical adjustments can be made to correct for the respondents' tendency to report what they think the "correct" response should be.

Research on the correlation of resident opinion about service quality and "objective" ratings of service quality vary, with some showing stronger relationships than others. NRC's own research has demonstrated that residents who report the lowest ratings of street repair live in communities with objectively worse street conditions than those who report high ratings of street repair (based on road quality, delay in street repair, number of road repair employees). Similarly, the lowest rated fire services appear to be "objectively" worse than the highest rated fire services (expenditures per capita, response time, "professional" status of firefighters, breadth of services and training provided). Resident opinion commonly reflects objective performance data but is an important measure on its own. NRC principals have written, "If you collect trash three times a day but residents think that your trash haul is lousy, you still have a problem."

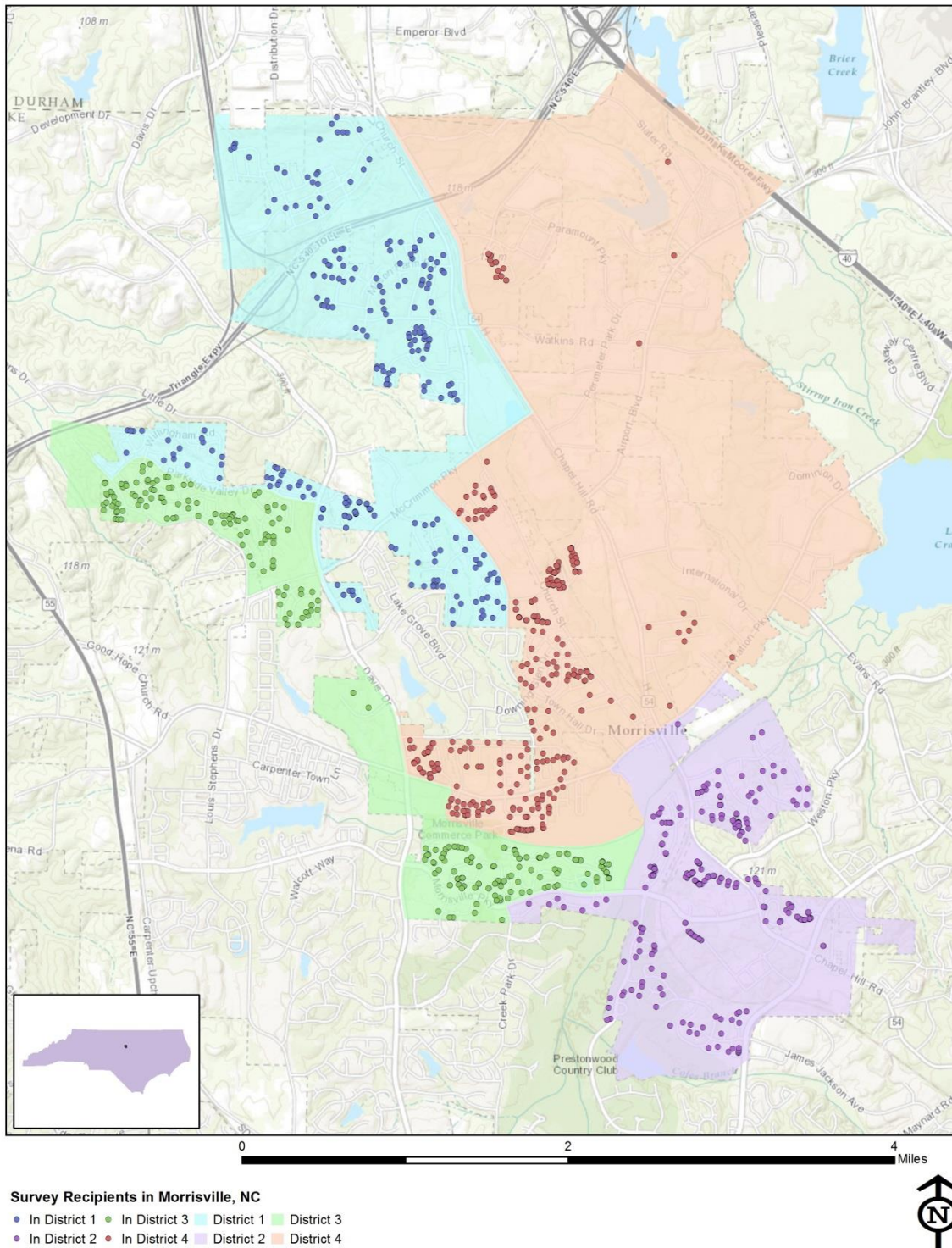
Survey Sampling

"Sampling" refers to the method by which households were chosen to receive the survey. All households within the Town of Morrisville were eligible to participate in the survey. A list of all households within the zip codes serving Morrisville was purchased based on updated listings from the United States Postal Service. Since some of the zip codes that serve the Town of Morrisville households may also serve addresses that lie outside of the community, the exact geographic location of each housing unit was compared to community boundaries using the most current municipal boundary file (updated on a quarterly basis) and addresses located outside of the Town of Morrisville boundaries were removed from consideration. Each address identified as being within Town boundaries was further identified as being within one of the four council districts.

To choose the 1,200 survey recipients, a systematic sampling method was applied to the list of households previously screened for geographic location. Systematic sampling is a procedure whereby a complete list of all possible households is culled, selecting every *Nth* one, giving each eligible household a known probability of selection, until the appropriate number of households is selected. Multi-family housing units were over sampled as residents of this type of housing typically respond at lower rates to surveys than do those in single-family housing units. Figure 1 displays a map of the households selected to receive the survey. In general, because of the random sampling techniques used, the displayed sampling density will closely mirror the overall housing unit density (which may be different from the population density). While the theory of probability assumes no bias in selection, there may be some minor variations in practice (meaning, an area with only 15% of the housing units might be sampled at an actual rate that is slightly above or below that).

An individual within each household was selected using the birthday method. The birthday method selects a person within the household by asking the "person whose birthday has most recently passed" to complete the questionnaire. The underlying assumption in this method is that day of birth has no relationship to the way people respond to surveys. This instruction was contained in the cover letter accompanying the questionnaire.

Figure 1: Location of Survey Recipients



Survey Administration and Response

Selected households received three mailings, one week apart, beginning on 30th of January, 2015. The first mailing was a prenotification postcard announcing the upcoming survey. The next mailing contained a letter from the Mayor inviting the household to participate, a questionnaire and a postage-paid return envelope. The final mailing contained a reminder letter, another survey and a postage-paid return envelope. The second cover letter asked those who had not completed the survey to do so and those who had already done so to refrain from turning in another survey. Completed surveys were collected over the following eight weeks.

The National Citizen Survey™

About 3% of the 1,200 surveys mailed were returned because the housing unit was vacant or the postal service was unable to deliver the survey as addressed. Of the remaining 1,165 households that received the survey, 220 completed the survey, providing an overall response rate of 19%. Of the 220 completed surveys, 42 were completed online. Additionally, responses were tracked by council district; response rates by council district ranged from 17% to 21%.

Table 73: Survey Response Rates by Council District

	Number mailed	Undeliverable	Eligible	Returned	Response rate
Council District 1	249	2	247	53	21%
Council District 2	309	9	300	57	19%
Council District 3	292	11	281	49	17%
Council District 4	350	13	337	60	18%
Overall	1,200	35	1,165	219	19%

Confidence Intervals

It is customary to describe the precision of estimates made from surveys by a “level of confidence” and accompanying “confidence interval” (or margin of error). A traditional level of confidence, and the one used here, is 95%. The 95% confidence interval can be any size and quantifies the sampling error or imprecision of the survey results because some residents’ opinions are relied on to estimate all residents’ opinions.¹

The margin of error for the Town of Morrisville survey is no greater than plus or minus seven percentage points around any given percent reported for the entire sample (220 completed surveys).

For subgroups of responses, the margin of error increases because the sample size for the subgroup is smaller. For subgroups of approximately 100 respondents, the margin of error is plus or minus 10 percentage points.

Survey Processing (Data Entry)

Upon receipt, completed surveys were assigned a unique identification number. Additionally, each survey was reviewed and “cleaned” as necessary. For example, a question may have asked a respondent to pick two items out of a list of five, but the respondent checked three; in this case, NRC would use protocols to randomly choose two of the three selected items for inclusion in the dataset.

All surveys then were entered twice into an electronic dataset; any discrepancies were resolved in comparison to the original survey form. Range checks as well as other forms of quality control were also performed.

Survey Data Weighting

The demographic characteristics of the survey sample were compared to those found in the 2010 Census and American Community Survey estimates for adults in the Town of Morrisville. The primary objective of weighting survey data is to make the survey sample reflective of the larger population of the community. The characteristics used for weighting were housing tenure, housing type, ethnicity and race, age, sex, and council district. The results of the weighting scheme are presented in the following table.

¹ A 95% confidence interval indicates that for every 100 random samples of this many residents, 95 of the confidence intervals created will include the “true” population response. This theory is applied in practice to mean that the “true” perspective of the target population lies within the confidence interval created for a single survey. For example, if 75% of residents rate a service as “excellent” or “good,” then the 4% margin of error (for the 95% confidence interval) indicates that the range of likely responses for the entire community is between 71% and 79%. This source of uncertainty is called sampling error. In addition to sampling error, other sources of error may affect any survey, including the non-response of residents with opinions different from survey responders. Though standardized on The NCS, on other surveys, differences in question wording, order, translation and data entry, as examples, can lead to somewhat varying results.

The National Citizen Survey™

Table 74: Morrisville, NC 2015 Weighting Table

Characteristic	Population Norm	Unweighted Data	Weighted Data
Housing			
Rent home	52%	31%	51%
Own home	48%	69%	49%
Detached unit	37%	49%	38%
Attached unit	63%	51%	62%
Race and Ethnicity			
White	57%	69%	57%
Not white	43%	31%	43%
Not Hispanic	94%	97%	94%
Hispanic	6%	3%	6%
Sex and Age			
Female	52%	48%	52%
Male	48%	52%	48%
18-34 years of age	40%	20%	39%
35-54 years of age	44%	45%	44%
55+ years of age	15%	36%	16%
Females 18-34	22%	11%	22%
Females 35-54	21%	19%	21%
Females 55+	9%	18%	9%
Males 18-34	19%	9%	17%
Males 35-54	23%	25%	24%
Males 55+	7%	17%	7%
Area			
District 1	25%	23%	24%
District 2	27%	23%	26%
District 3	22%	21%	22%
District 4	27%	33%	27%

Survey Data Analysis and Reporting

The survey dataset was analyzed using the Statistical Package for the Social Sciences (SPSS). For the most part, the percentages presented in the reports represent the “percent positive.” The percent positive is the combination of the top two most positive response options (i.e., “excellent” and “good,” “very safe” and “somewhat safe,” “essential” and “very important,” etc.), or, in the case of resident behaviors/participation, the percent positive represents the proportion of respondents indicating “yes” or participating in an activity at least once a month.

On many of the questions in the survey respondents may answer “don’t know.” The proportion of respondents giving this reply is shown in the full set of responses included in Appendix A. However, these responses have been removed from the analyses presented in the reports. In other words, the tables and graphs display the responses from respondents who had an opinion about a specific item.

Appendix D: Survey Materials

Dear Morrisville Resident,

It won't take much of your time to make a big difference!

Your household has been randomly selected to participate in a survey about your community. Your survey will arrive in a few days.

We will be using the information you provide to make important decisions regarding our strategic planning initiatives. This is your opportunity to make your voice heard!

Thank you for helping create a better Town!

Sincerely,



Mark Stohlman
Mayor

Dear Morrisville Resident,

It won't take much of your time to make a big difference!

Your household has been randomly selected to participate in a survey about your community. Your survey will arrive in a few days.

We will be using the information you provide to make important decisions regarding our strategic planning initiatives. This is your opportunity to make your voice heard!

Thank you for helping create a better Town!

Sincerely,



Mark Stohlman
Mayor

Dear Morrisville Resident,

It won't take much of your time to make a big difference!

Your household has been randomly selected to participate in a survey about your community. Your survey will arrive in a few days.

We will be using the information you provide to make important decisions regarding our strategic planning initiatives. This is your opportunity to make your voice heard!

Thank you for helping create a better Town!

Sincerely,



Mark Stohlman
Mayor

Dear Morrisville Resident,

It won't take much of your time to make a big difference!

Your household has been randomly selected to participate in a survey about your community. Your survey will arrive in a few days.

We will be using the information you provide to make important decisions regarding our strategic planning initiatives. This is your opportunity to make your voice heard!

Thank you for helping create a better Town!

Sincerely,



Mark Stohlman
Mayor



P.O. Box 166
Morrisville, NC 27560

Presorted
First Class Mail
US Postage
PAID
Boulder, CO
Permit NO. 94



P.O. Box 166
Morrisville, NC 27560

Presorted
First Class Mail
US Postage
PAID
Boulder, CO
Permit NO. 94



P.O. Box 166
Morrisville, NC 27560

Presorted
First Class Mail
US Postage
PAID
Boulder, CO
Permit NO. 94



P.O. Box 166
Morrisville, NC 27560

Presorted
First Class Mail
US Postage
PAID
Boulder, CO
Permit NO. 94



Town of Morrisville
Post Office Box 166
Morrisville, North Carolina 27560

Phone: 919.463.6200
Fax: 919.481.2907
www.townofmorrisville.org

February 2015

Dear Town of Morrisville Resident:

Please help us shape the future of Morrisville! You have been selected at random to participate in the 2015 Morrisville Citizen Survey.

Please take a few minutes to fill out the enclosed survey. Your participation in this survey is very important – especially since your household is one of only a small number of households being surveyed. Your feedback will help Morrisville make decisions that affect our Town.

A few things to remember:

- **Your responses are completely anonymous.**
- In order to hear from a diverse group of residents, the adult 18 years or older in your household who most recently had a birthday should complete this survey.
- **You may return the survey by mail in the enclosed postage-paid envelope, or you can complete the survey online at:**

www.n-r-c.com/survey/morrisville.htm

If you have any questions about the survey please call 919-463-6200.

Thank you for your time and participation!

Sincerely,

Mark Stohlman
Mayor

Our Mission: The Town of Morrisville is dedicated to enhancing the quality of life by preserving our past and protecting our future through a collective community partnership. By balancing responsible growth with core values, we embrace a sense of membership, communication, and support.



Town of Morrisville
Post Office Box 166
Morrisville, North Carolina 27560

Phone: 919.463.6200
Fax: 919.481.2907
www.townofmorrisville.org

February 2015

Dear Town of Morrisville Resident:

Please help us shape the future of Morrisville! You have been selected at random to participate in the 2015 Morrisville Citizen Survey.

Please take a few minutes to fill out the enclosed survey. Your participation in this survey is very important – especially since your household is one of only a small number of households being surveyed. Your feedback will help Morrisville make decisions that affect our Town.

A few things to remember:

- **Your responses are completely anonymous.**
- In order to hear from a diverse group of residents, the adult 18 years or older in your household who most recently had a birthday should complete this survey.
- **You may return the survey by mail in the enclosed postage-paid envelope, or you can complete the survey online at:**

www.n-r-c.com/survey/morrisvillesurvey.htm

If you have any questions about the survey please call 919-463-6200.

Thank you for your time and participation!

Sincerely,

Mark Stohlman
Mayor

Our Mission: The Town of Morrisville is dedicated to enhancing the quality of life by preserving our past and protecting our future through a collective community partnership. By balancing responsible growth with core values, we embrace a sense of membership, communication, and support.



Town of Morrisville
Post Office Box 166
Morrisville, North Carolina 27560

Phone: 919.463.6200
Fax: 919.481.2907
www.townofmorrisville.org

February 2015

Dear Town of Morrisville Resident:

Please help us shape the future of Morrisville! You have been selected at random to participate in the 2015 Morrisville Citizen Survey.

Please take a few minutes to fill out the enclosed survey. Your participation in this survey is very important – especially since your household is one of only a small number of households being surveyed. Your feedback will help Morrisville make decisions that affect our Town.

A few things to remember:

- **Your responses are completely anonymous.**
- In order to hear from a diverse group of residents, the adult 18 years or older in your household who most recently had a birthday should complete this survey.
- **You may return the survey by mail in the enclosed postage-paid envelope, or you can complete the survey online at:**

www.n-r-c.com/survey/morrisville2015survey.htm

If you have any questions about the survey please call 919-463-6200.

Thank you for your time and participation!

Sincerely,

Mark Stohlman
Mayor

Our Mission: The Town of Morrisville is dedicated to enhancing the quality of life by preserving our past and protecting our future through a collective community partnership. By balancing responsible growth with core values, we embrace a sense of membership, communication, and support.



Town of Morrisville
Post Office Box 166
Morrisville, North Carolina 27560

Phone: 919.463.6200
Fax: 919.481.2907
www.townofmorrisville.org

February 2015

Dear Town of Morrisville Resident:

Please help us shape the future of Morrisville! You have been selected at random to participate in the 2015 Morrisville Citizen Survey.

Please take a few minutes to fill out the enclosed survey. Your participation in this survey is very important – especially since your household is one of only a small number of households being surveyed. Your feedback will help Morrisville make decisions that affect our Town.

A few things to remember:

- **Your responses are completely anonymous.**
- In order to hear from a diverse group of residents, the adult 18 years or older in your household who most recently had a birthday should complete this survey.
- **You may return the survey by mail in the enclosed postage-paid envelope, or you can complete the survey online at:**

www.n-r-c.com/survey/morrisvillesurvey2015.htm

If you have any questions about the survey please call 919-463-6200.

Thank you for your time and participation!

Sincerely,

Mark Stohlman
Mayor

Our Mission: The Town of Morrisville is dedicated to enhancing the quality of life by preserving our past and protecting our future through a collective community partnership. By balancing responsible growth with core values, we embrace a sense of membership, communication, and support.



Town of Morrisville
Post Office Box 166
Morrisville, North Carolina 27560

Phone: 919.463.6200
Fax: 919.481.2907
www.townofmorrisville.org

February 2015

Dear Town of Morrisville Resident:

Here's a second chance if you haven't already responded to the 2015 Morrisville Citizen Survey!
(If you completed it and sent it back, we thank you for your time and ask you to recycle this survey. Please do not respond twice.)

Please help us shape the future of Morrisville! You have been selected at random to participate in the 2015 Morrisville Citizen Survey.

Please take a few minutes to fill out the enclosed survey. Your participation in this survey is very important – especially since your household is one of only a small number of households being surveyed. Your feedback will help Morrisville make decisions that affect our Town.

A few things to remember:

- **Your responses are completely anonymous.**
- In order to hear from a diverse group of residents, the adult 18 years or older in your household who most recently had a birthday should complete this survey.
- **You may return the survey by mail in the enclosed postage-paid envelope, or you can complete the survey online at:**

www.n-r-c.com/survey/morrisville.htm

If you have any questions about the survey please call 919-463-6200.

Thank you for your time and participation!

Sincerely,

Mark Stohlman
Mayor

Our Mission: The Town of Morrisville is dedicated to enhancing the quality of life by preserving our past and protecting our future through a collective community partnership. By balancing responsible growth with core values, we embrace a sense of membership, communication, and support.



Town of Morrisville
Post Office Box 166
Morrisville, North Carolina 27560

Phone: 919.463.6200
Fax: 919.481.2907
www.townofmorrisville.org

February 2015

Dear Town of Morrisville Resident:

Here's a second chance if you haven't already responded to the 2015 Morrisville Citizen Survey!
(If you completed it and sent it back, we thank you for your time and ask you to recycle this survey. Please do not respond twice.)

Please help us shape the future of Morrisville! You have been selected at random to participate in the 2015 Morrisville Citizen Survey.

Please take a few minutes to fill out the enclosed survey. Your participation in this survey is very important – especially since your household is one of only a small number of households being surveyed. Your feedback will help Morrisville make decisions that affect our Town.

A few things to remember:

- **Your responses are completely anonymous.**
- In order to hear from a diverse group of residents, the adult 18 years or older in your household who most recently had a birthday should complete this survey.
- **You may return the survey by mail in the enclosed postage-paid envelope, or you can complete the survey online at:**

www.n-r-c.com/survey/morrisvillesurvey.htm

If you have any questions about the survey please call 919-463-6200.

Thank you for your time and participation!

Sincerely,

Mark Stohlman
Mayor

Our Mission: The Town of Morrisville is dedicated to enhancing the quality of life by preserving our past and protecting our future through a collective community partnership. By balancing responsible growth with core values, we embrace a sense of membership, communication, and support.



Town of Morrisville
Post Office Box 166
Morrisville, North Carolina 27560

Phone: 919.463.6200
Fax: 919.481.2907
www.townofmorrisville.org

February 2015

Dear Town of Morrisville Resident:

Here's a second chance if you haven't already responded to the 2015 Morrisville Citizen Survey!
(If you completed it and sent it back, we thank you for your time and ask you to recycle this survey. Please do not respond twice.)

Please help us shape the future of Morrisville! You have been selected at random to participate in the 2015 Morrisville Citizen Survey.

Please take a few minutes to fill out the enclosed survey. Your participation in this survey is very important – especially since your household is one of only a small number of households being surveyed. Your feedback will help Morrisville make decisions that affect our Town.

A few things to remember:

- **Your responses are completely anonymous.**
- In order to hear from a diverse group of residents, the adult 18 years or older in your household who most recently had a birthday should complete this survey.
- **You may return the survey by mail in the enclosed postage-paid envelope, or you can complete the survey online at:**

www.n-r-c.com/survey/morrisville2015survey.htm

If you have any questions about the survey please call 919-463-6200.

Thank you for your time and participation!

Sincerely,

Mark Stohlman
Mayor

Our Mission: The Town of Morrisville is dedicated to enhancing the quality of life by preserving our past and protecting our future through a collective community partnership. By balancing responsible growth with core values, we embrace a sense of membership, communication, and support.



Town of Morrisville
Post Office Box 166
Morrisville, North Carolina 27560

Phone: 919.463.6200
Fax: 919.481.2907
www.townofmorrisville.org

February 2015

Dear Town of Morrisville Resident:

Here's a second chance if you haven't already responded to the 2015 Morrisville Citizen Survey!
(If you completed it and sent it back, we thank you for your time and ask you to recycle this survey. Please do not respond twice.)

Please help us shape the future of Morrisville! You have been selected at random to participate in the 2015 Morrisville Citizen Survey.

Please take a few minutes to fill out the enclosed survey. Your participation in this survey is very important – especially since your household is one of only a small number of households being surveyed. Your feedback will help Morrisville make decisions that affect our Town.

A few things to remember:

- **Your responses are completely anonymous.**
- In order to hear from a diverse group of residents, the adult 18 years or older in your household who most recently had a birthday should complete this survey.
- **You may return the survey by mail in the enclosed postage-paid envelope, or you can complete the survey online at:**

www.n-r-c.com/survey/morrisvillesurvey2015.htm

If you have any questions about the survey please call 919-463-6200.

Thank you for your time and participation!

Sincerely,

Mark Stohlman
Mayor

Our Mission: The Town of Morrisville is dedicated to enhancing the quality of life by preserving our past and protecting our future through a collective community partnership. By balancing responsible growth with core values, we embrace a sense of membership, communication, and support.

The Town of Morrisville 2015 Citizen Survey

Please complete this questionnaire if you are the adult (age 18 or older) in the household who most recently had a birthday. The adult's year of birth does not matter. Please select the response (by circling the number or checking the box) that most closely represents your opinion for each question. Your responses are anonymous and will be reported in group form only.

1. Please rate each of the following aspects of quality of life in Morrisville:

	<i>Excellent</i>	<i>Good</i>	<i>Fair</i>	<i>Poor</i>	<i>Don't know</i>
Morrisville as a place to live.....	1	2	3	4	5
Your neighborhood as a place to live.....	1	2	3	4	5
Morrisville as a place to raise children	1	2	3	4	5
Morrisville as a place to work	1	2	3	4	5
Morrisville as a place to visit	1	2	3	4	5
Morrisville as a place to retire	1	2	3	4	5
The overall quality of life in Morrisville.....	1	2	3	4	5

2. Please rate each of the following characteristics as they relate to Morrisville as a whole:

	<i>Excellent</i>	<i>Good</i>	<i>Fair</i>	<i>Poor</i>	<i>Don't know</i>
Overall feeling of safety in Morrisville	1	2	3	4	5
Overall ease of getting to the places you usually have to visit	1	2	3	4	5
Quality of overall natural environment in Morrisville	1	2	3	4	5
Overall "built environment" of Morrisville (including overall design, buildings, parks and transportation systems)	1	2	3	4	5
Health and wellness opportunities in Morrisville.....	1	2	3	4	5
Overall opportunities for education and enrichment.....	1	2	3	4	5
Overall economic health of Morrisville	1	2	3	4	5
Sense of community.....	1	2	3	4	5
Overall image or reputation of Morrisville	1	2	3	4	5

3. Please indicate how likely or unlikely you are to do each of the following:

	<i>Very likely</i>	<i>Somewhat likely</i>	<i>Somewhat unlikely</i>	<i>Very unlikely</i>	<i>Don't know</i>
Recommend living in Morrisville to someone who asks	1	2	3	4	5
Remain in Morrisville for the next five years.....	1	2	3	4	5

4. Please rate how safe or unsafe you feel:

	<i>Very safe</i>	<i>Somewhat safe</i>	<i>Neither safe nor unsafe</i>	<i>Somewhat unsafe</i>	<i>Very unsafe</i>	<i>Don't know</i>
In your neighborhood during the day.....	1	2	3	4	5	6
In Morrisville's business area during the day	1	2	3	4	5	6

5. Please rate each of the following characteristics as they relate to Morrisville as a whole:

	<i>Excellent</i>	<i>Good</i>	<i>Fair</i>	<i>Poor</i>	<i>Don't know</i>
Traffic flow on major streets	1	2	3	4	5
Ease of public parking.....	1	2	3	4	5
Ease of travel by car in Morrisville	1	2	3	4	5
Ease of travel by public transportation in Morrisville	1	2	3	4	5
Ease of travel by bicycle in Morrisville	1	2	3	4	5
Ease of walking in Morrisville	1	2	3	4	5
Availability of paths and walking trails	1	2	3	4	5
Air quality	1	2	3	4	5
Cleanliness of Morrisville.....	1	2	3	4	5
Overall appearance of Morrisville	1	2	3	4	5
Public places where people want to spend time	1	2	3	4	5
Variety of housing options	1	2	3	4	5
Availability of affordable quality housing	1	2	3	4	5
Fitness opportunities (including exercise classes and paths or trails, etc.)	1	2	3	4	5
Recreational opportunities.....	1	2	3	4	5
Availability of affordable quality food.....	1	2	3	4	5
Availability of affordable quality health care	1	2	3	4	5
Availability of preventive health services	1	2	3	4	5
Availability of affordable quality mental health care	1	2	3	4	5

6. Please rate each of the following characteristics as they relate to Morrisville as a whole:

	<i>Excellent</i>	<i>Good</i>	<i>Fair</i>	<i>Poor</i>	<i>Don't know</i>
Availability of affordable quality child care/preschool	1	2	3	4	5
K-12 education	1	2	3	4	5
Adult educational opportunities.....	1	2	3	4	5
Opportunities to attend cultural/arts/music activities	1	2	3	4	5
Opportunities to participate in religious or spiritual events and activities	1	2	3	4	5
Employment opportunities	1	2	3	4	5
Shopping opportunities.....	1	2	3	4	5
Cost of living in Morrisville.....	1	2	3	4	5
Overall quality of business and service establishments in Morrisville	1	2	3	4	5
Vibrant downtown/commercial area	1	2	3	4	5
Overall quality of new development in Morrisville.....	1	2	3	4	5
Opportunities to participate in social events and activities	1	2	3	4	5
Opportunities to volunteer.....	1	2	3	4	5
Opportunities to participate in community matters	1	2	3	4	5
Openness and acceptance of the community toward people of diverse backgrounds	1	2	3	4	5
Neighborliness of residents in Morrisville	1	2	3	4	5

7. Please indicate whether or not you have done each of the following in the last 12 months.

	<i>No</i>	<i>Yes</i>
Made efforts to conserve water	1	2
Made efforts to make your home more energy efficient	1	2
Observed a code violation or other hazard in Morrisville (weeds, abandoned buildings, etc.).....	1	2
Household member was a victim of a crime in Morrisville	1	2
Reported a crime to the police in Morrisville	1	2
Stocked supplies in preparation for an emergency	1	2
Campaigned or advocated for an issue, cause or candidate	1	2
Contacted the Town of Morrisville (in-person, phone, email or web) for help or information	1	2
Contacted Morrisville elected officials (in-person, phone, email or web) to express your opinion	1	2

8. In the last 12 months, about how many times, if at all, have you or other household members done each of the following in Morrisville?

	<i>2 times a week or more</i>	<i>2-4 times a month</i>	<i>Once a month or less</i>	<i>Not at all</i>
Used Morrisville recreation centers or their services	1	2	3	4
Visited a neighborhood park or Town park	1	2	3	4
Used Morrisville public libraries or their services	1	2	3	4
Participated in religious or spiritual activities in Morrisville.....	1	2	3	4
Attended a Town-sponsored event	1	2	3	4
Used bus, rail, subway or other public transportation instead of driving.....	1	2	3	4
Carpooled with other adults or children instead of driving alone.....	1	2	3	4
Walked or biked instead of driving	1	2	3	4
Volunteered your time to some group/activity in Morrisville	1	2	3	4
Participated in a club	1	2	3	4
Talked to or visited with your immediate neighbors	1	2	3	4
Done a favor for a neighbor.....	1	2	3	4

9. Thinking about local public meetings (of local elected officials like Town Council or County Commissioners, advisory boards, town halls, HOA, neighborhood watch, etc.), in the last 12 months, about how many times, if at all, have you or other household members attended a local public meeting?

	<i>2 times a week or more</i>	<i>2-4 times a month</i>	<i>Once a month or less</i>	<i>Not at all</i>
<u>Attended</u> a Town of Morrisville Council Meeting.....	1	2	3	4
<u>Attended</u> a Town of Morrisville Advisory Committee Meeting	1	2	3	4
<u>Attended</u> an HOA or Neighborhood Watch Meeting	1	2	3	4

The Town of Morrisville 2015 Citizen Survey

10. Please rate the quality of each of the following services in Morrisville:

	<i>Excellent</i>	<i>Good</i>	<i>Fair</i>	<i>Poor</i>	<i>Don't know</i>
Police services	1	2	3	4	5
Fire services.....	1	2	3	4	5
Ambulance or emergency medical services	1	2	3	4	5
Crime prevention.....	1	2	3	4	5
Fire prevention and education.....	1	2	3	4	5
Traffic enforcement	1	2	3	4	5
Street repair	1	2	3	4	5
Street cleaning	1	2	3	4	5
Street lighting.....	1	2	3	4	5
Snow removal	1	2	3	4	5
Sidewalk maintenance	1	2	3	4	5
Traffic signal timing.....	1	2	3	4	5
Bus or transit services.....	1	2	3	4	5
Garbage collection	1	2	3	4	5
Recycling	1	2	3	4	5
Yard waste pick-up	1	2	3	4	5
Storm drainage	1	2	3	4	5
Drinking water.....	1	2	3	4	5
Sewer services	1	2	3	4	5
Power (electric and/or gas) utility.....	1	2	3	4	5
Utility billing	1	2	3	4	5
Town parks	1	2	3	4	5
Recreation programs or classes.....	1	2	3	4	5
Recreation centers or facilities	1	2	3	4	5
Land use, planning and zoning.....	1	2	3	4	5
Code enforcement (weeds, abandoned buildings, etc.)	1	2	3	4	5
Animal control	1	2	3	4	5
Economic development	1	2	3	4	5
Health services	1	2	3	4	5
Public library services	1	2	3	4	5
Public information services	1	2	3	4	5
Cable television.....	1	2	3	4	5
Emergency preparedness (services that prepare the community for natural disasters or other emergency situations).....	1	2	3	4	5
Preservation of natural areas such as open space, farmlands and greenbelts.....	1	2	3	4	5
Morrisville open space	1	2	3	4	5
Town-sponsored special events.....	1	2	3	4	5
Overall customer service by Morrisville employees (police, receptionists, planners, etc.).....	1	2	3	4	5

11. Overall, how would you rate the quality of the services provided by each of the following?

	<i>Excellent</i>	<i>Good</i>	<i>Fair</i>	<i>Poor</i>	<i>Don't know</i>
The Town of Morrisville.....	1	2	3	4	5
The Federal Government	1	2	3	4	5
Wake County	1	2	3	4	5
Wake County Public School System.....	1	2	3	4	5

12. Please rate the following categories of Morrisville government performance:

	<i>Excellent</i>	<i>Good</i>	<i>Fair</i>	<i>Poor</i>	<i>Don't know</i>
The value of services for the taxes paid to Morrisville	1	2	3	4	5
The overall direction that Morrisville is taking.....	1	2	3	4	5
The job Morrisville government does at welcoming citizen involvement.....	1	2	3	4	5
Overall confidence in Morrisville government	1	2	3	4	5
Generally acting in the best interest of the community	1	2	3	4	5
Being honest.....	1	2	3	4	5
Treating all residents fairly	1	2	3	4	5

13. Please rate how important, if at all, you think it is for the Morrisville community to focus on each of the following in the coming two years:

	<i>Essential</i>	<i>Very important</i>	<i>Somewhat important</i>	<i>Not at all important</i>
Overall feeling of safety in Morrisville	1	2	3	4
Overall ease of getting to the places you usually have to visit	1	2	3	4
Quality of overall natural environment in Morrisville	1	2	3	4
Overall “built environment” of Morrisville (including overall design, buildings, parks and transportation systems)	1	2	3	4
Health and wellness opportunities in Morrisville	1	2	3	4
Overall opportunities for education and enrichment	1	2	3	4
Overall economic health of Morrisville	1	2	3	4
Sense of community	1	2	3	4

14. Planning for large capital investment projects can represent a challenge in aligning resources effectively to the needs valued by the community. To better gauge community support to plan for capital spending, please indicate how important, if at all, each of the following projects and issues will be for the Town to address over the next five years:

	<i>Essential</i>	<i>Very important</i>	<i>Somewhat important</i>	<i>Not at all important</i>	<i>Don't know</i>
Cultural/Historical improvements	1	2	3	4	5
Environmental/Stormwater improvements	1	2	3	4	5
Parks/Recreational improvements	1	2	3	4	5
Bicycle/Pedestrian improvements	1	2	3	4	5
Public facility improvements	1	2	3	4	5
Public safety improvements	1	2	3	4	5
Roadway/Transportation improvements	1	2	3	4	5
Town Center/Main Street implementation	1	2	3	4	5
Other (please specify)	1	2	3	4	5

15. The town operating budget does not have the capacity to pay for significant capital improvements without issuing debt. A tax rate increase is generally needed to pay debt service payments. Please indicate to what extent you would support or oppose a tax rate increase to fund each of the following capital investment projects:

	<i>Strongly support</i>	<i>Somewhat support</i>	<i>Somewhat oppose</i>	<i>Strongly oppose</i>
Cultural/Historical improvements	1	2	3	4
Environmental/Stormwater improvements	1	2	3	4
Parks/Recreational improvements	1	2	3	4
Bicycle/Pedestrian improvements	1	2	3	4
Public facility improvements	1	2	3	4
Public safety improvements	1	2	3	4
Roadway/Transportation improvements	1	2	3	4
Town Center/Main Street implementation	1	2	3	4
Other (please specify)	1	2	3	4

16. The majority of traffic issues in Morrisville occur on State-owned roads (NC54, Morrisville-Carpenter Road, Aviation Parkway, etc.). Typically State dollars fund any improvements on these roads, but may take many years to be prioritized for construction. Would you support using Town funds to improve State-owned roadways?

- ☐ Strongly support
- ☐ Somewhat support
- ☐ Somewhat oppose
- ☐ Strongly oppose

17. What are the top three things you would like to see Morrisville do or accomplish in the next 5 years?

The Town of Morrisville 2015 Citizen Survey

Our last questions are about you and your household. Again, all of your responses to this survey are completely anonymous and will be reported in group form only.

D1. How often, if at all, do you do each of the following, considering all of the times you could?

	<i>Never</i>	<i>Rarely</i>	<i>Sometimes</i>	<i>Usually</i>	<i>Always</i>
Recycle at home	1	2	3	4	5
Purchase goods or services from a business located in Morrisville	1	2	3	4	5
Eat at least 5 portions of fruits and vegetables a day	1	2	3	4	5
Participate in moderate or vigorous physical activity	1	2	3	4	5
Read or watch local news (via television, paper, computer, etc.)	1	2	3	4	5
Vote in local elections.....	1	2	3	4	5

D2. Would you say that in general your health is:

- ☐ Excellent ☐ Very good ☐ Good ☐ Fair ☐ Poor

D3. What impact, if any, do you think the economy will have on your family income in the next 6 months? Do you think the impact will be:

- ☐ Very positive ☐ Somewhat positive ☐ Neutral ☐ Somewhat negative ☐ Very negative

D4. What is your employment status?

- ☐ Working full time for pay
☐ Working part time for pay
☐ Unemployed, looking for paid work
☐ Unemployed, not looking for paid work
☐ Fully retired

D5. Do you work inside the boundaries of Morrisville?

- ☐ Yes, outside the home
☐ Yes, from home
☐ No

D6. How many years have you lived in Morrisville?

- ☐ Less than 2 years ☐ 11-20 years
☐ 2-5 years ☐ More than 20 years
☐ 6-10 years

D7. Which best describes the building you live in?

- ☐ One family house detached from any other houses
☐ Building with two or more homes (duplex, townhome, apartment or condominium)
☐ Mobile home
☐ Other

D8. Is this house, apartment or mobile home...

- ☐ Rented
☐ Owned

D9. About how much is your monthly housing cost for the place you live (including rent, mortgage payment, property tax, property insurance and homeowners' association (HOA) fees)?

- ☐ Less than \$300 per month
☐ \$300 to \$599 per month
☐ \$600 to \$999 per month
☐ \$1,000 to \$1,499 per month
☐ \$1,500 to \$2,499 per month
☐ \$2,500 or more per month

D10. Do any children 17 or under live in your household?

- ☐ No ☐ Yes

D11. Are you or any other members of your household aged 65 or older?

- ☐ No ☐ Yes

D12. How much do you anticipate your household's total income before taxes will be for the current year? (Please include in your total income money from all sources for all persons living in your household.)

- ☐ Less than \$25,000
☐ \$25,000 to \$49,999
☐ \$50,000 to \$99,999
☐ \$100,000 to \$149,999
☐ \$150,000 or more

Please respond to both questions D13 and D14:

D13. Are you Spanish, Hispanic or Latino?

- ☐ No, not Spanish, Hispanic or Latino
☐ Yes, I consider myself to be Spanish, Hispanic or Latino

D14. What is your race? (Mark one or more races to indicate what race you consider yourself to be.)

- ☐ American Indian or Alaskan Native
☐ Asian, Asian Indian or Pacific Islander
☐ Black or African American
☐ White
☐ Other

D15. In which category is your age?

- ☐ 18-24 years ☐ 55-64 years
☐ 25-34 years ☐ 65-74 years
☐ 35-44 years ☐ 75 years or older
☐ 45-54 years

D16. What is your sex?

- ☐ Female ☐ Male

D17. Do you consider a cell phone or land line your primary telephone number?

- ☐ Cell ☐ Land line ☐ Both

Thank you for completing this survey. Please return the completed survey in the postage-paid envelope to: National Research Center, Inc., PO Box 549, Belle Mead, NJ 08502



Post Office Box 166
Morrisville, NC 27560

IMPORTANT
Town
Survey
Enclosed

Presorted
First Class Mail
US Postage
PAID
Boulder, CO
Permit NO.94