

County Social Services Agencies and Local Governing Boards

Aimee Wall

October 23, 2013

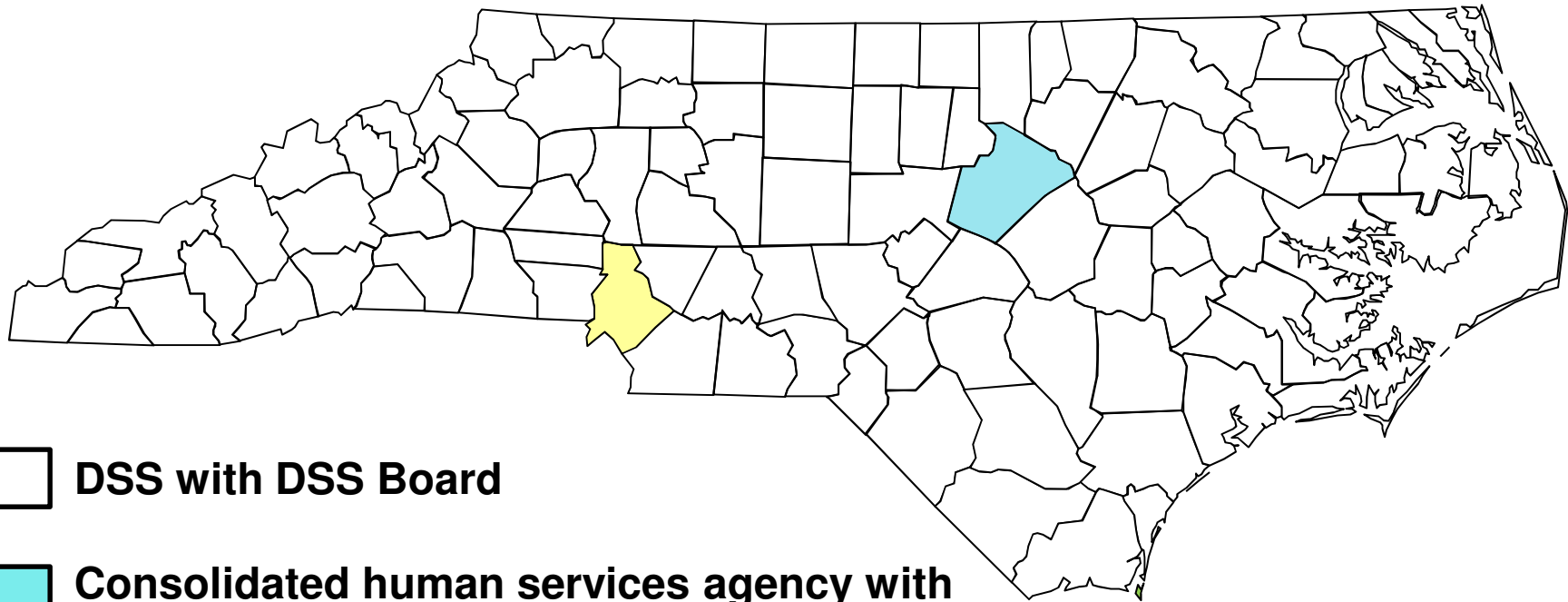


UNC
SCHOOL OF GOVERNMENT

www.sog.unc.edu

Types of Local DSS Agencies

June 2012



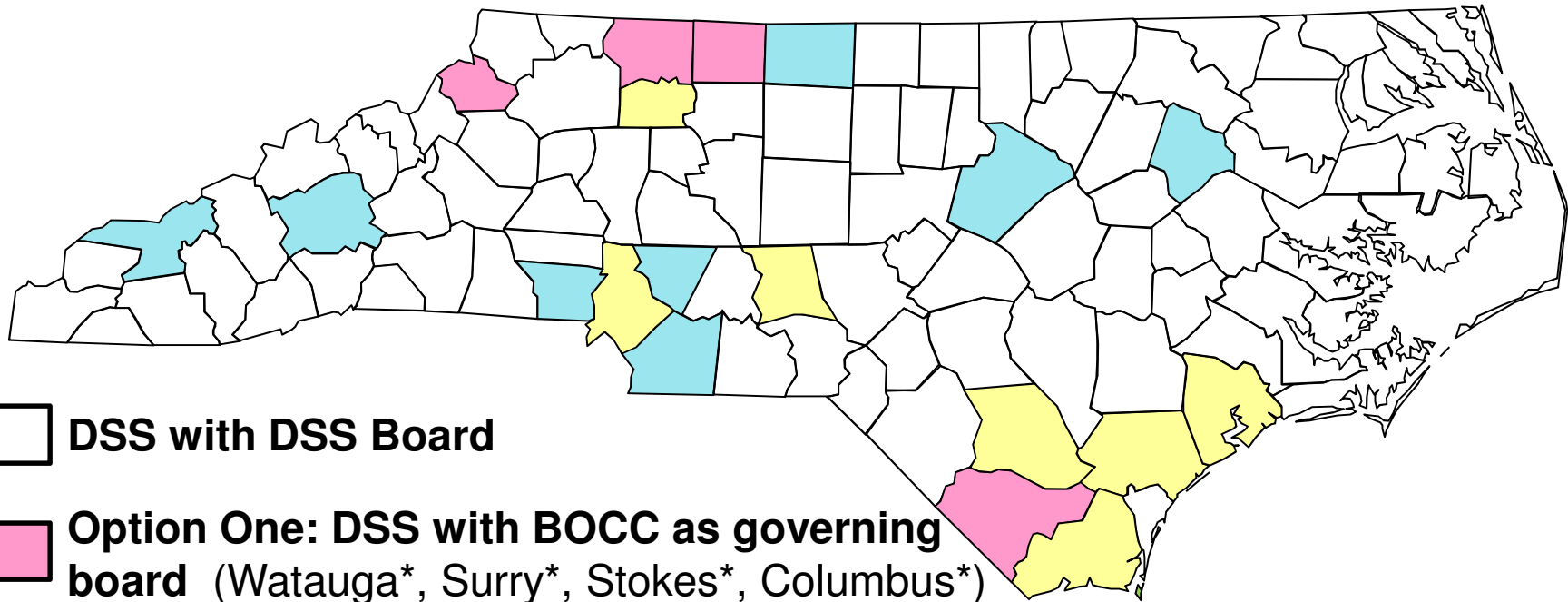
 **DSS with DSS Board**

 **Consolidated human services agency with a consolidated human services board (Wake)**

 **Consolidated human services agency with BOCC as governing board (Mecklenburg)**


Types of Local DSS Agencies

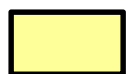
October 2013



 **DSS with DSS Board**

 **Option One: DSS with BOCC as governing board** (Watauga*, Surry*, Stokes*, Columbus*)

 **Option Two: CHSA with CHS Board** (Swain, Buncombe*, Gaston*, Cabarrus, Union, Rockingham*, Wake, Edgecombe)

 **Option Three: CHSA with BOCC as governing board** (Yadkin, Mecklenburg, Montgomery, Bladen, Pender, Onslow, Brunswick)

Existing Options

81

County department of social services with county DSS board (“DSS Board”)

0

Multi-county social services agency; retain single county DSS boards

0

Two or more departments share a director; retain single county DSS boards

New Options

4

BOCC assumes powers and duties of local boards. Agencies stay the same. (Option One)

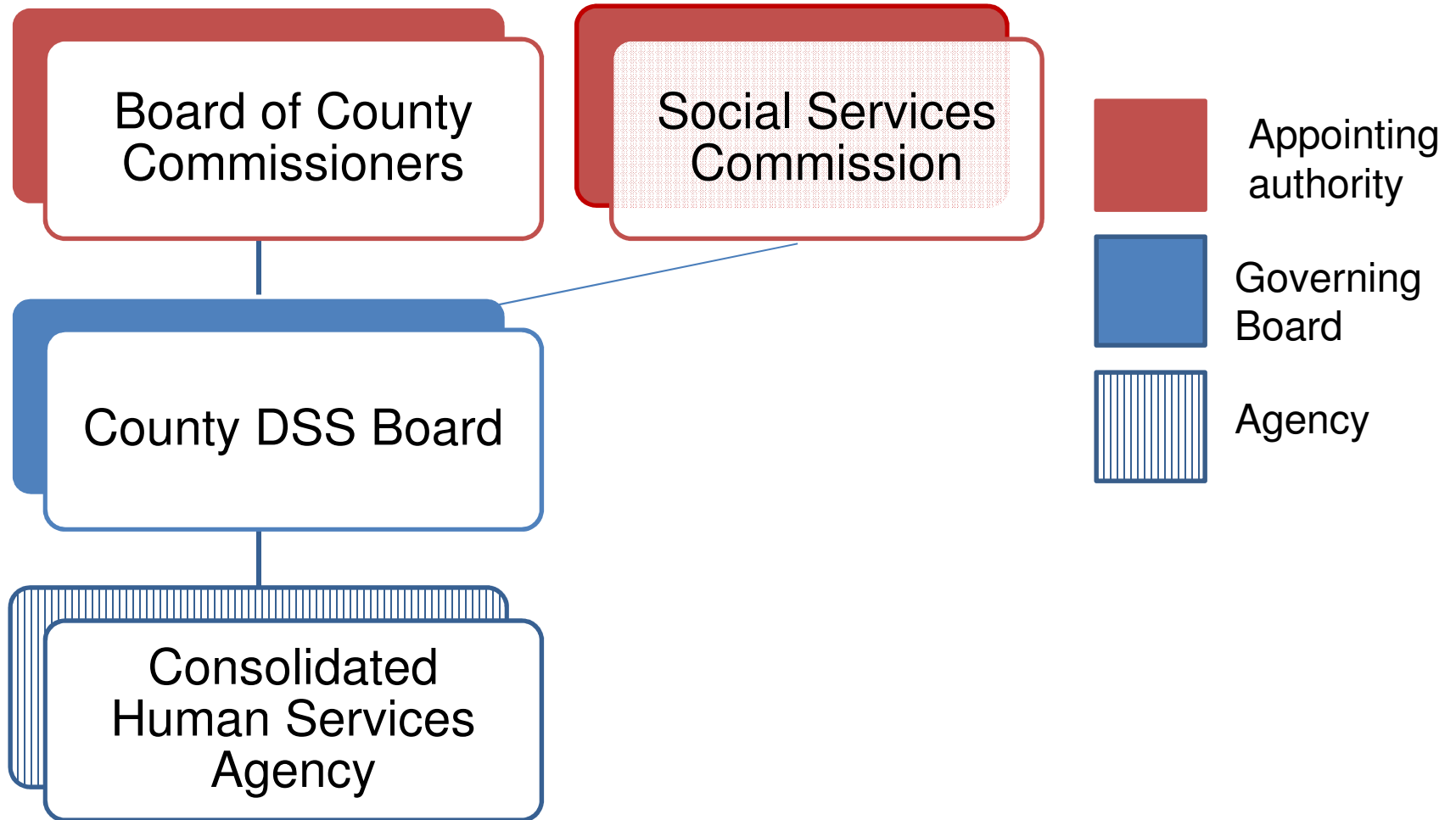
8

BOCC creates a consolidated human services agency (CHSA) and appoints a CHS board. (Option Two)

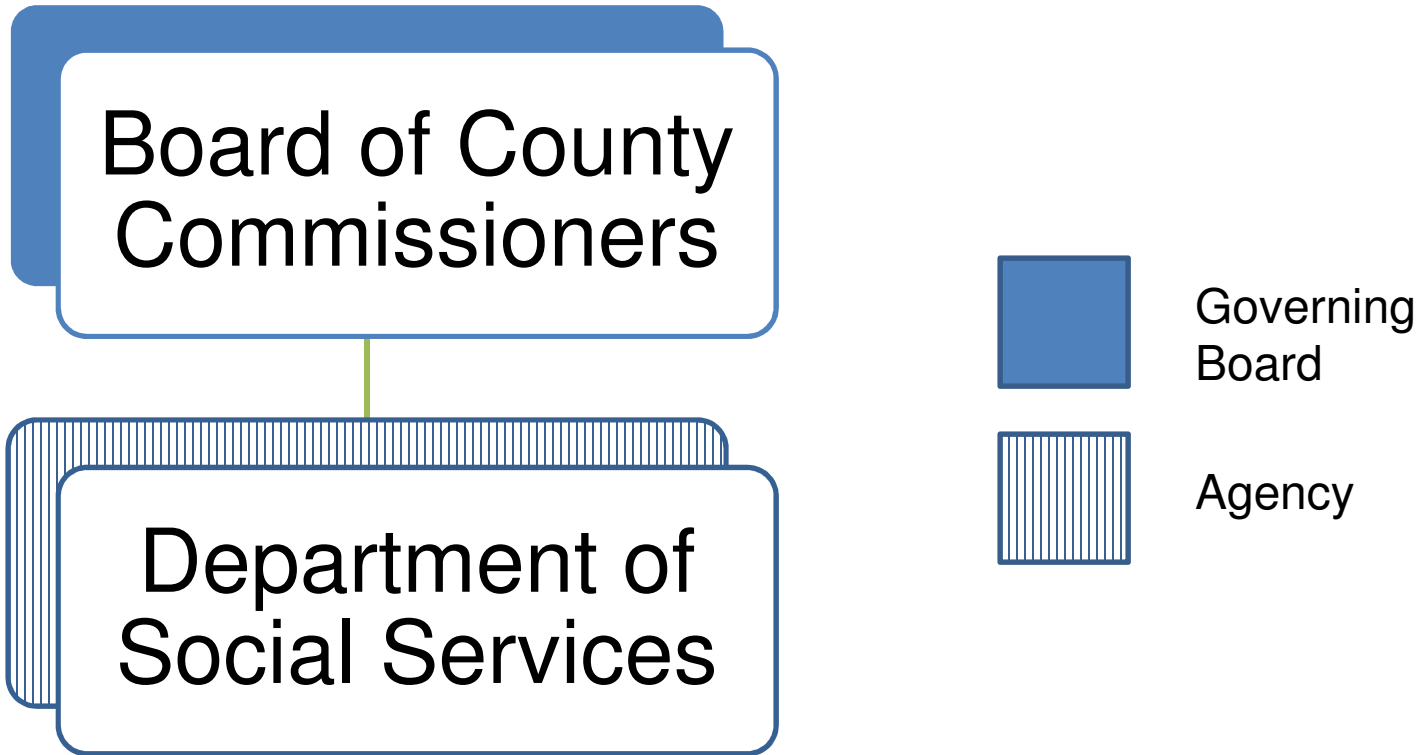
7

BOCC creates a CHSA and directly assumes the powers and duties of the CHS board.

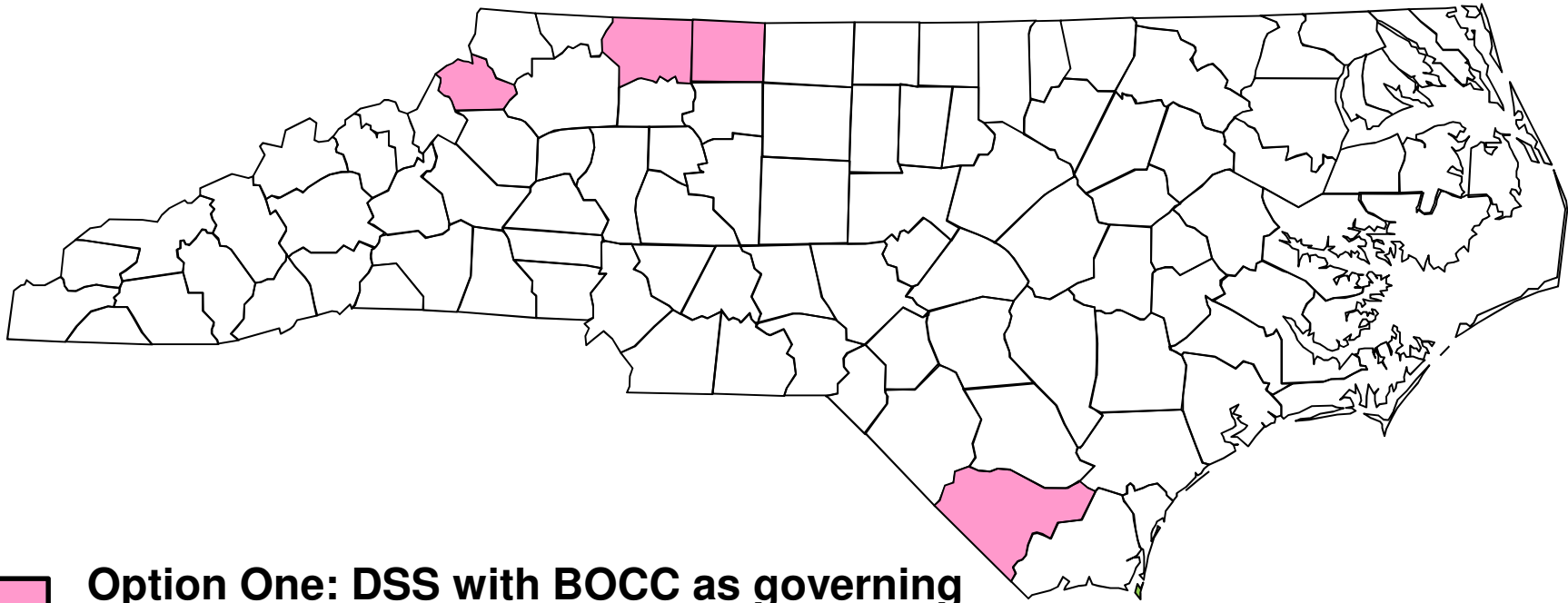
DSS Board



Option One



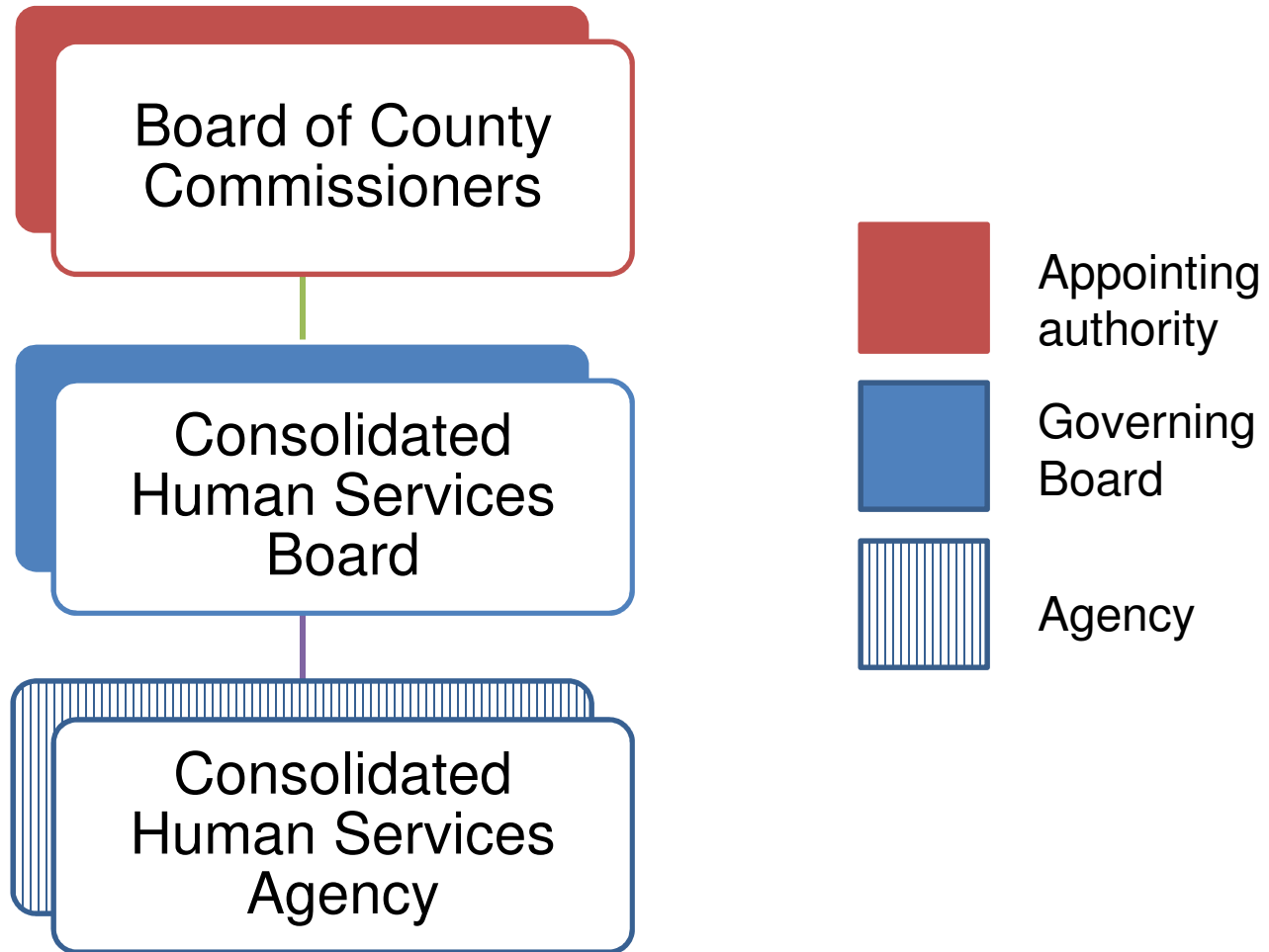
Types of Local DSS Agencies



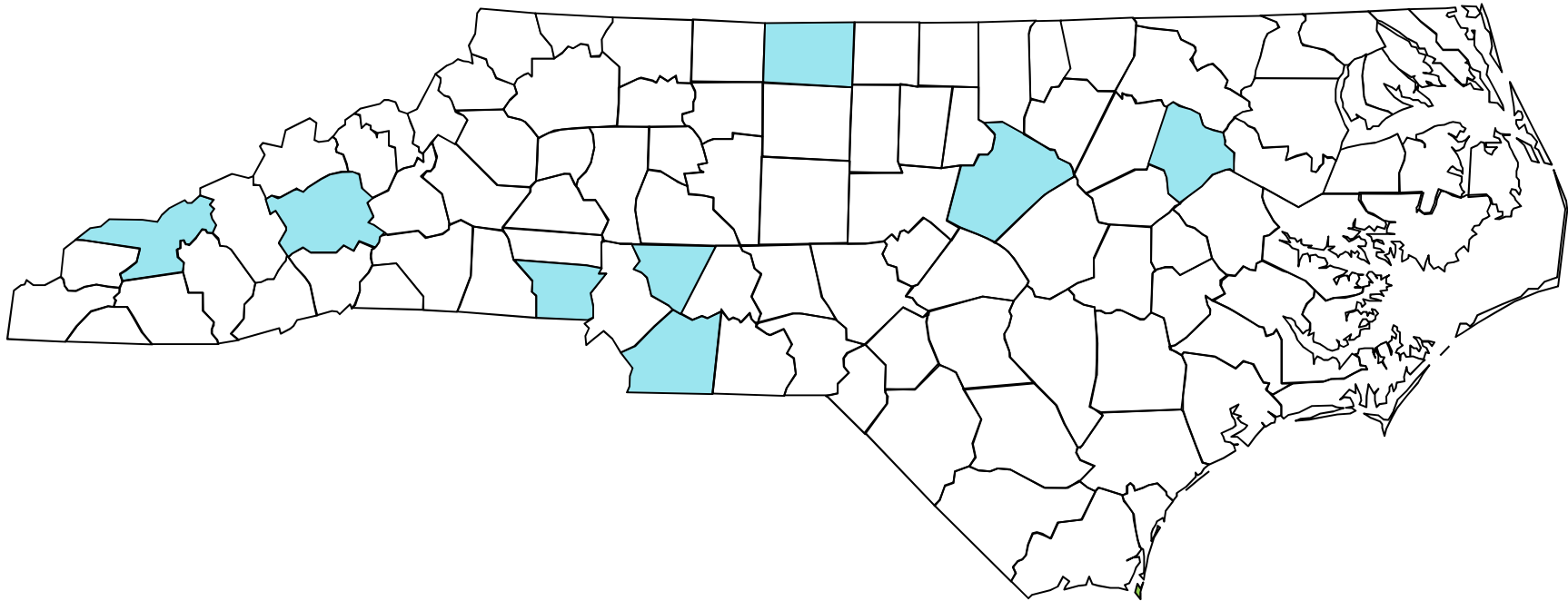
 **Option One: DSS with BOCC as governing board** (Watauga*, Surry*, Stokes*, Columbus*)

*Employees subject to SPA

Option Two



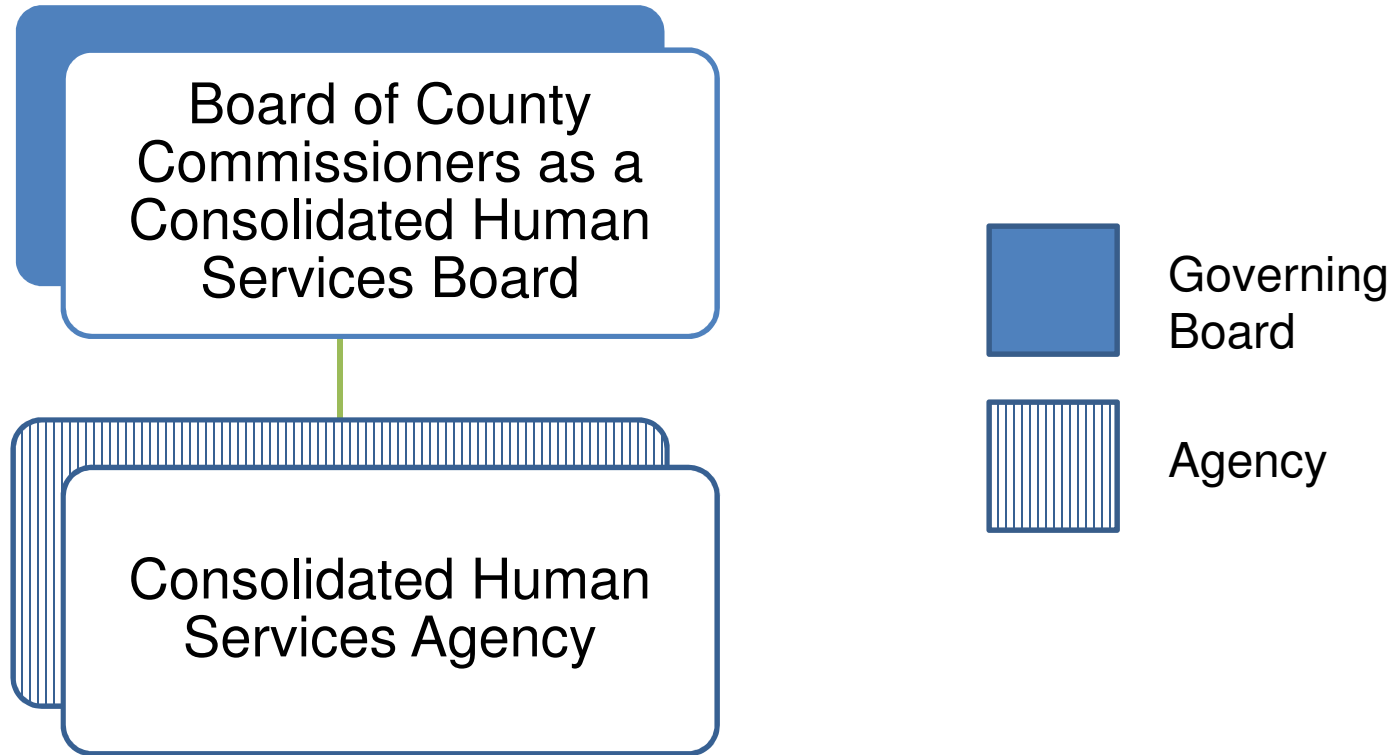
Types of Local DSS Agencies



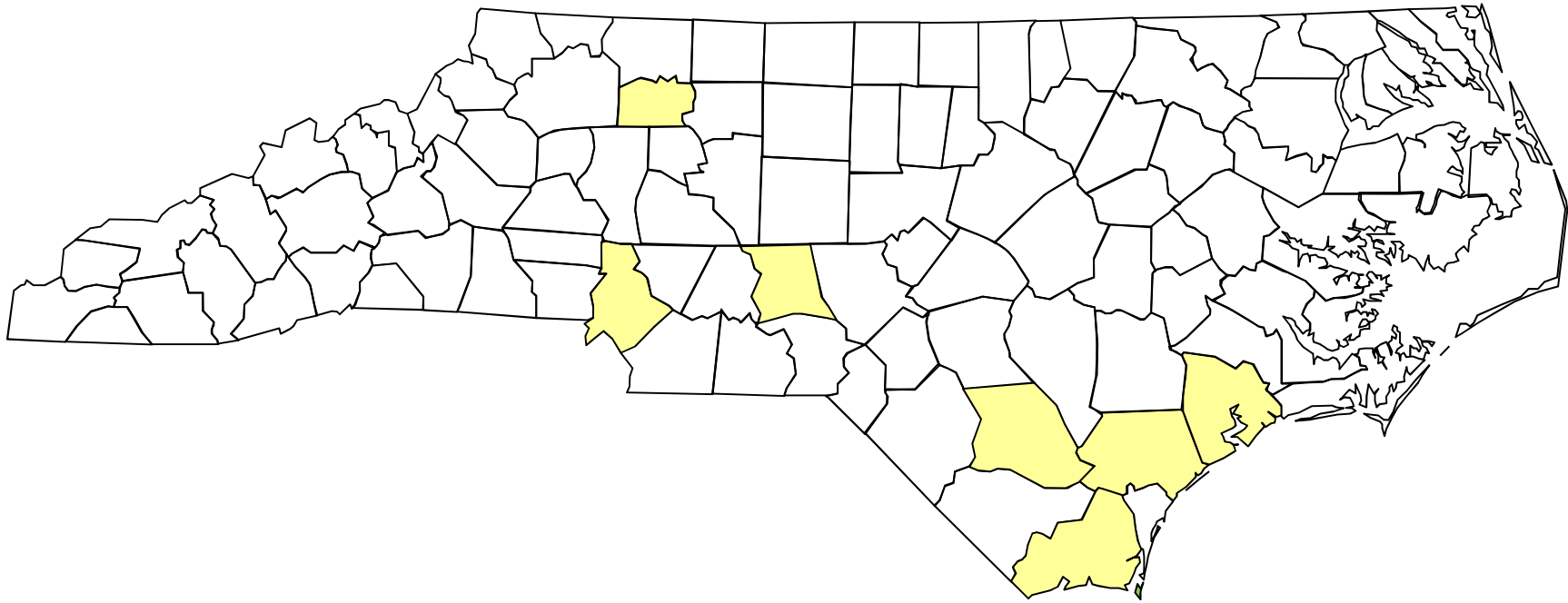
Option Two: CHSA with CHS Board (Swain, Buncombe*, Gaston*, Cabarrus, Union, Rockingham*, Wake, Edgecombe)

*Employees subject to SPA

Option Three



Types of Local DSS Agencies



 **Option Three: CHSA with BOCC as governing board** (Yadkin, Mecklenburg, Montgomery, Bladen, Pender, Onslow, Brunswick)

*Employees subject to SPA

Key Differences

	Hire Agency Director	Personnel
DSS	Board hires	SPA
One	BOCC hires	SPA
Two	County manager hires with advice and consent of CHS board	SPA optional
Three	County manager hires with advice and consent of BOCC	SPA optional