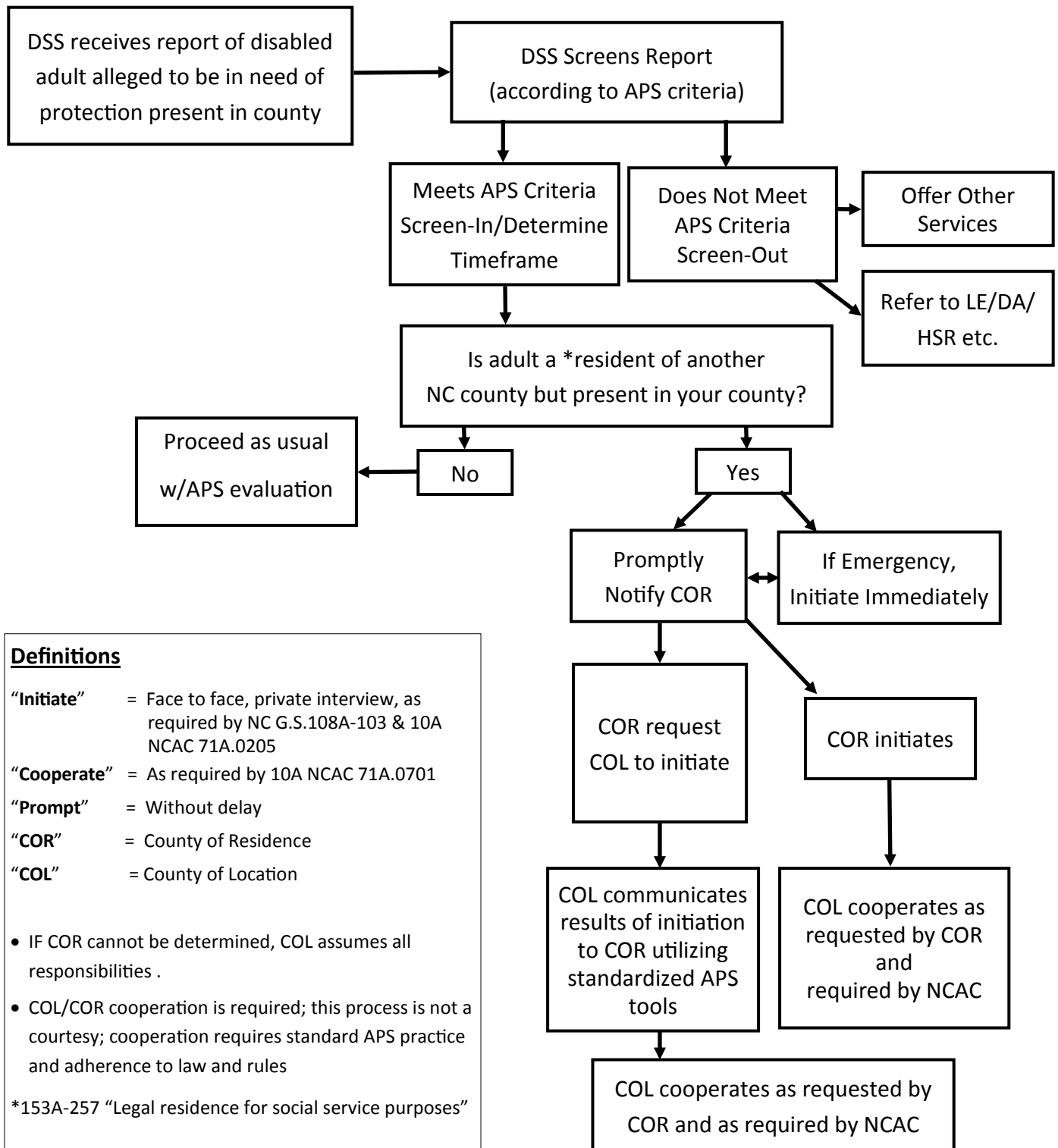


APS Reports Received When Adult Is Not Located in County of Residence

As required by 10A NCAC 71A.0701



Definitions

“Initiate” = Face to face, private interview, as required by NC G.S.108A-103 & 10A NCAC 71A.0205

“Cooperate” = As required by 10A NCAC 71A.0701

“Prompt” = Without delay

“COR” = County of Residence

“COL” = County of Location

- IF COR cannot be determined, COL assumes all responsibilities .
- COL/COR cooperation is required; this process is not a courtesy; cooperation requires standard APS practice and adherence to law and rules

*153A-257 “Legal residence for social service purposes”

Note: COR is responsible for the evaluation, case decision and mobilization of protective services (requesting assistance as needed from COL)