

Social Services Regional Supervision and Collaboration Working Group

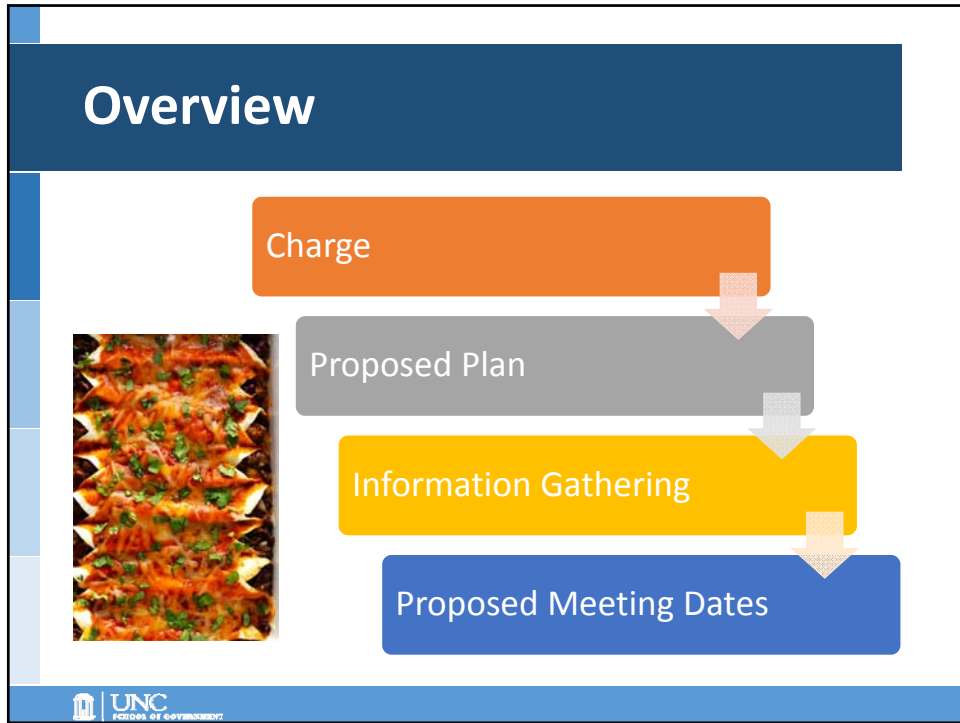
Aimee Wall



Stage One Wrap-Up



- SSWG report presented to the NCGA on 4/10/18
- Next steps
 - DHHS preparing plan for establishing regional offices
 - Plan due to NCGA by 11/15/18
 - Must take into account SSWG recommendations
 - Must provide for implementation by 3/2020
 - Legislative action required to proceed



Stage Two Charge

Collaboration

- Recommendations regarding legislative and regulatory changes necessary to improve collaboration between counties in the administration of social services programs and services.
- Must address:
 - information sharing
 - conflicts of interest
 - Inter-county movement of people/clients

UNC
UNIVERSITY OF NORTH CAROLINA

Stage Two Charge

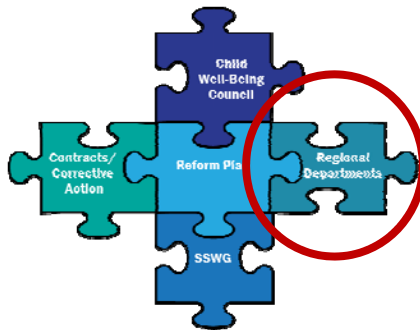
Regional Administration

- A vision for transitioning the State from a county-administered system to a regionally-administered system.
- Identify general benefits and challenges associated with making such a transition.
- Legislative recommendations not required.

Refresher: Regional Administration

- Different from regional *supervision* (Stage One)
- Proposed 2017 legislation would have mandated regional administration
 - SSWG would have been tasked with developing recommendations for implementation
 - **DID NOT PASS**
 - Instead, SSWG tasked with
 - Developing recommendations for regional *supervision*
 - Developing a vision for regional administration
- Current regional collaborations
 - Interlocal agreements for shared services/administration
 - Counties may share a director

Refresher: Regional Administration



- Optional regional administration (beginning 3/2019)
 - Departments separate from the counties (public authorities)
 - May be limited programs or services
 - County financial contribution to be specified by Social Services Commission regulation

Stage Two Timeline

May

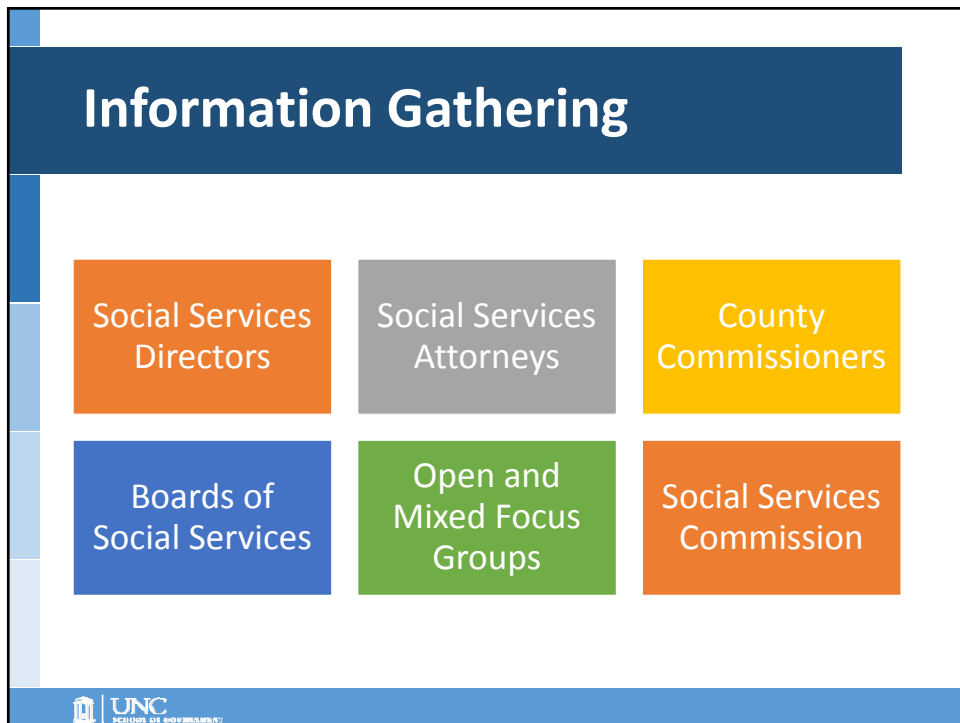
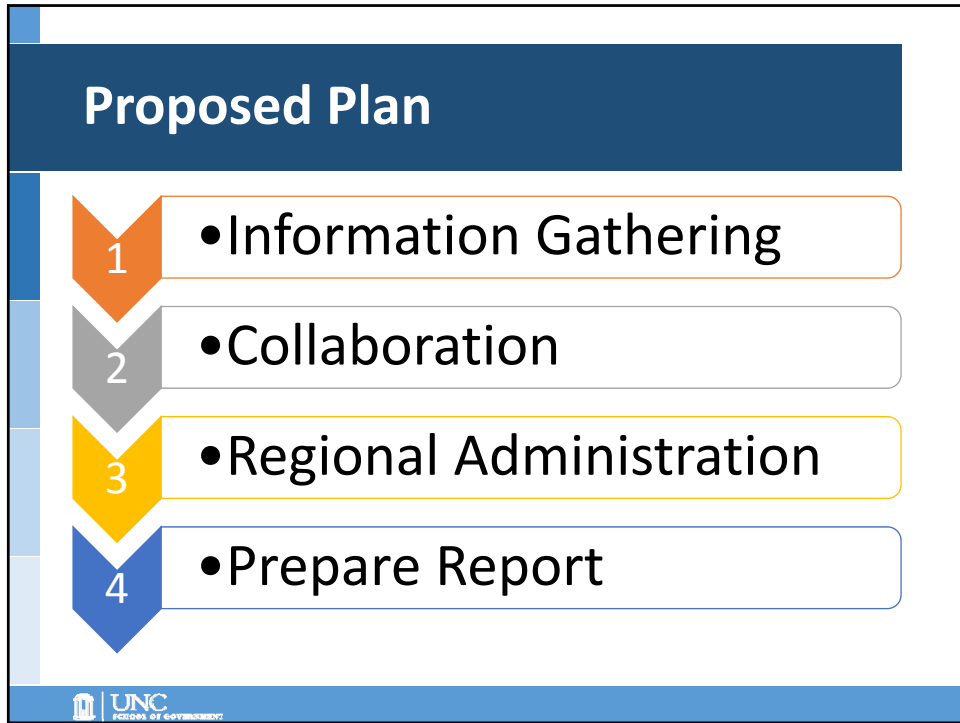
- 1 meeting

May-Aug

- No meetings
- Info gathering
- Webinars?

Sept-Jan

- 8-12 meetings



Information Gathering

- Public survey
 - Collaboration
 - Specific challenges/successes?
 - Conditions that enable the challenge?
 - Potential changes that could improve the situation?
 - Regional administration
 - Under what conditions would it make sense?
 - Factors working against regional administration?
 - If mandated, what should be the role of the counties?
 - Open ended: Anything else SSWG should know about collaboration or regional administration?



Potential Meeting Dates

Date	AM	PM	Date	AM	PM
Tues. Sept. 4	X		Thurs. Nov. 8	X	X
Fri. Sept. 14		X	Tues. Nov. 20	X	X
Tues. Oct. 2	X	X	Tues. Nov. 29	X	X
Tues. Oct. 9	X		Tues. Dec. 11	X	
			Thurs. Dec. 20	X	X

Too Late?

- Thursday, January 17 (AM/PM)
- Thursday, January 24 (AM/PM)


Review

- Will this plan put SSWG on track for fall?
 - Is anything unclear?
 - Is anything missing?
- Is the plan for stakeholder involvement sufficient to gather relevant information to inform your future discussions?
 - Other suggestions?
- Is there background research you would like SOG to do to prepare for fall discussions?


DISCUSSION

Example: Challenge/Success

Challenge	Success
<ul style="list-style-type: none">• County receives adult protective services report.• County has a clear conflict of interest.• County asks neighboring counties for assistance.• Who agrees? Who pays? How much? Reciprocity?	<ul style="list-style-type: none">• Washington County provides child support services for two counties (Tyrell and Hyde)• Interlocal agreement addresses financial and administrative responsibilities

 **UNC**
UNIVERSITY OF NORTH CAROLINA

SMALL GROUPS

 **UNC**
UNIVERSITY OF NORTH CAROLINA