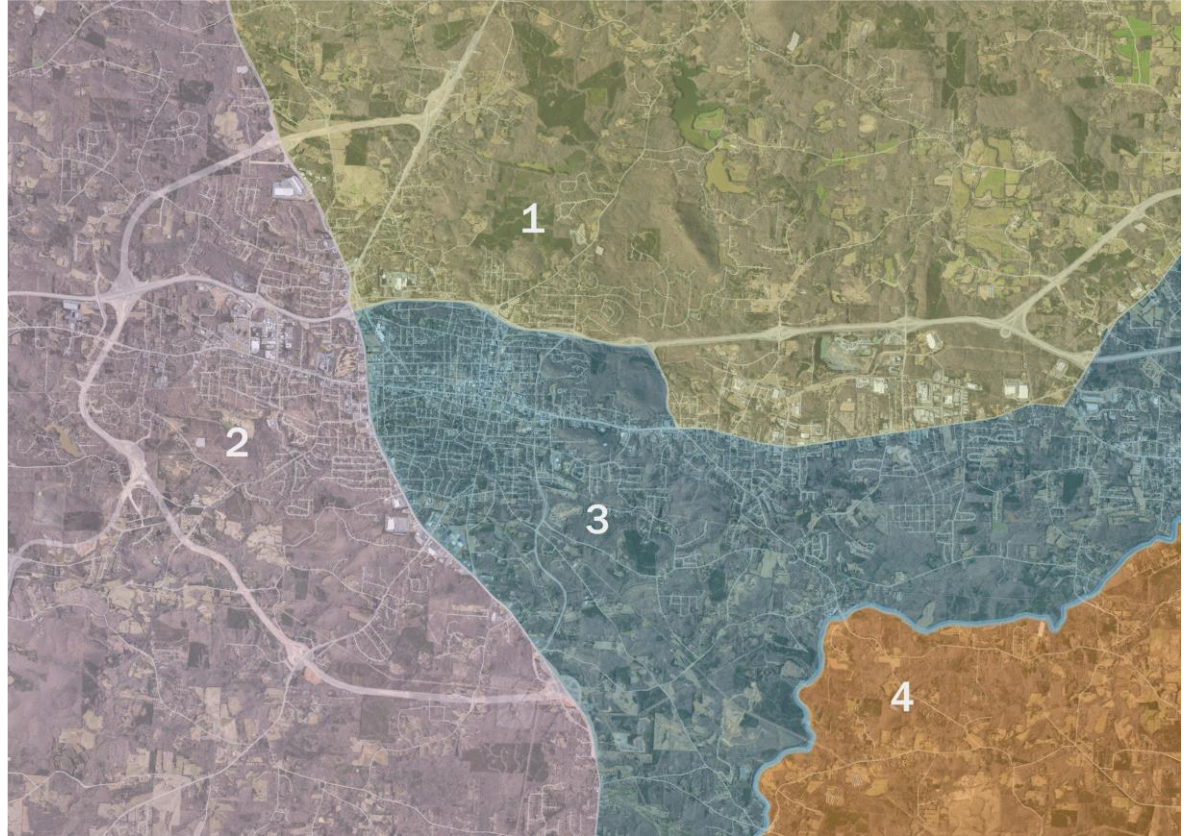


Census Delays and Redistricting

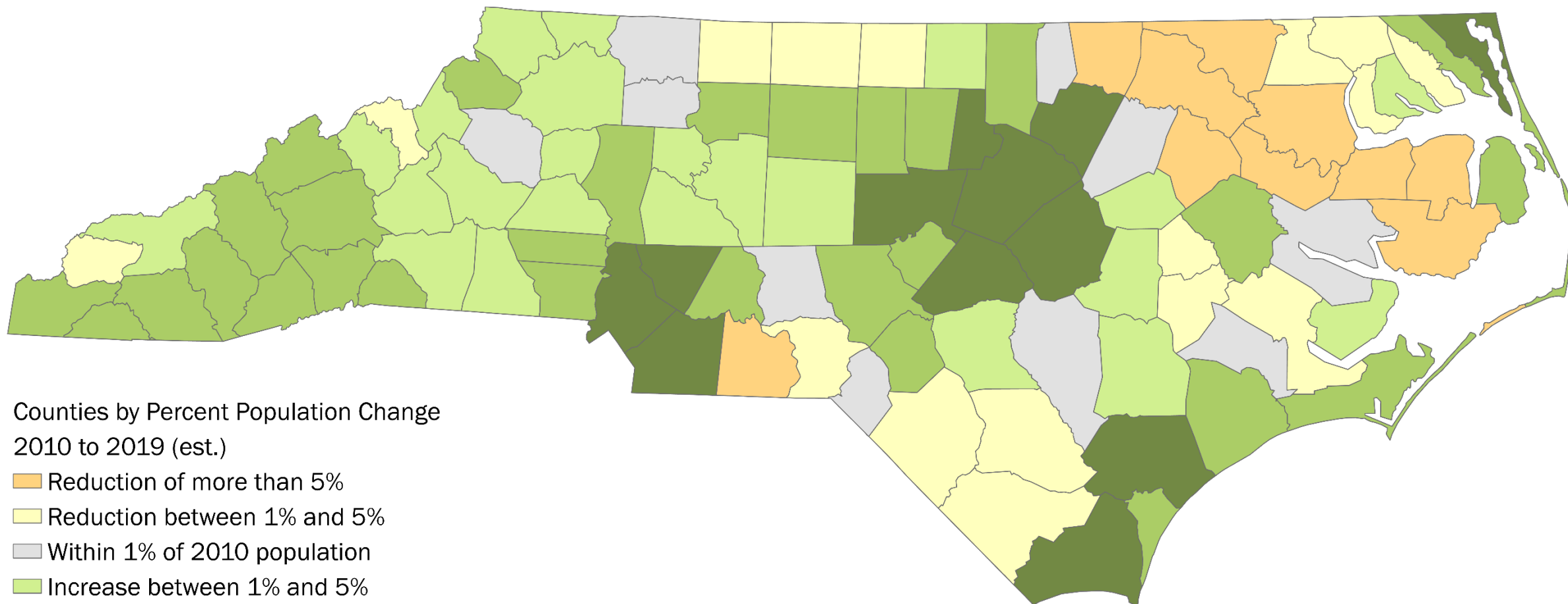
Blake Esselstyn
Mapfigure Consulting

Caroline Mackie
Poyner Spruill LLP

Local Redistricting Service, a project of
North Carolinians for Redistricting
Reform



March 2021

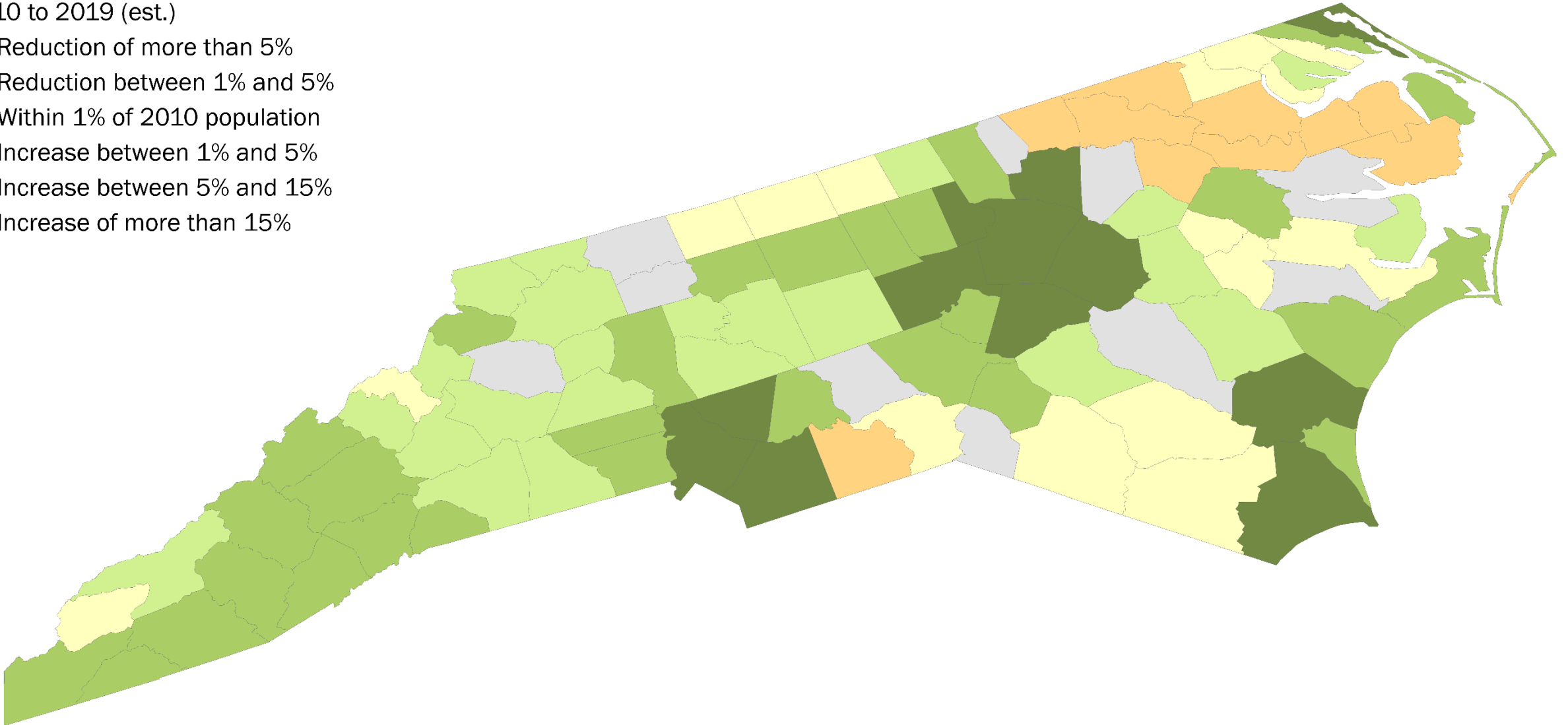


Counties by Percent Population Change
2010 to 2019 (est.)

- Reduction of more than 5%
- Reduction between 1% and 5%
- Within 1% of 2010 population
- Increase between 1% and 5%
- Increase between 5% and 15%
- Increase of more than 15%

Counties by Percent Population Change
2010 to 2019 (est.)

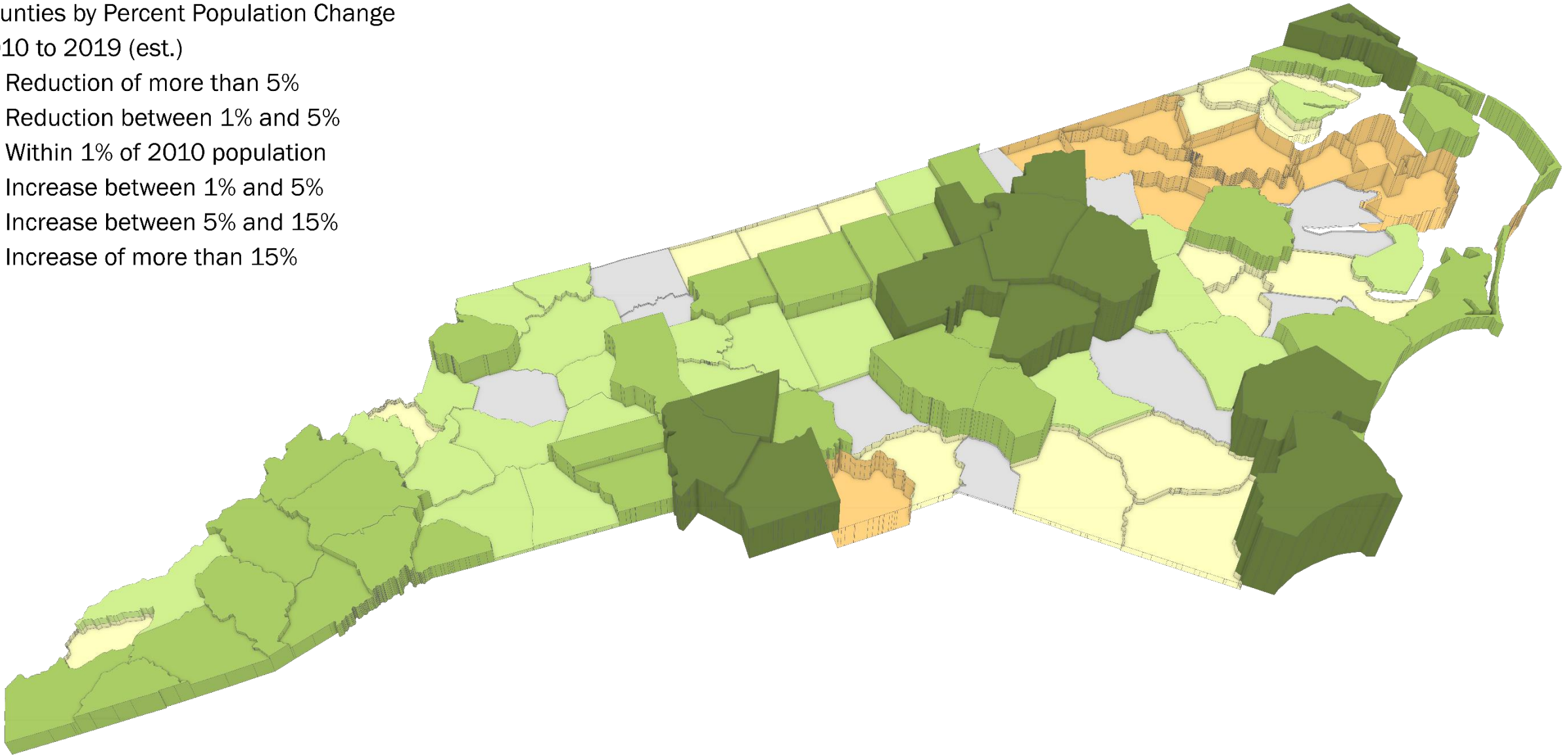
- Reduction of more than 5%
- Reduction between 1% and 5%
- Within 1% of 2010 population
- Increase between 1% and 5%
- Increase between 5% and 15%
- Increase of more than 15%



Source: 2010 US Census and NC OSBM 2019 County Estimates

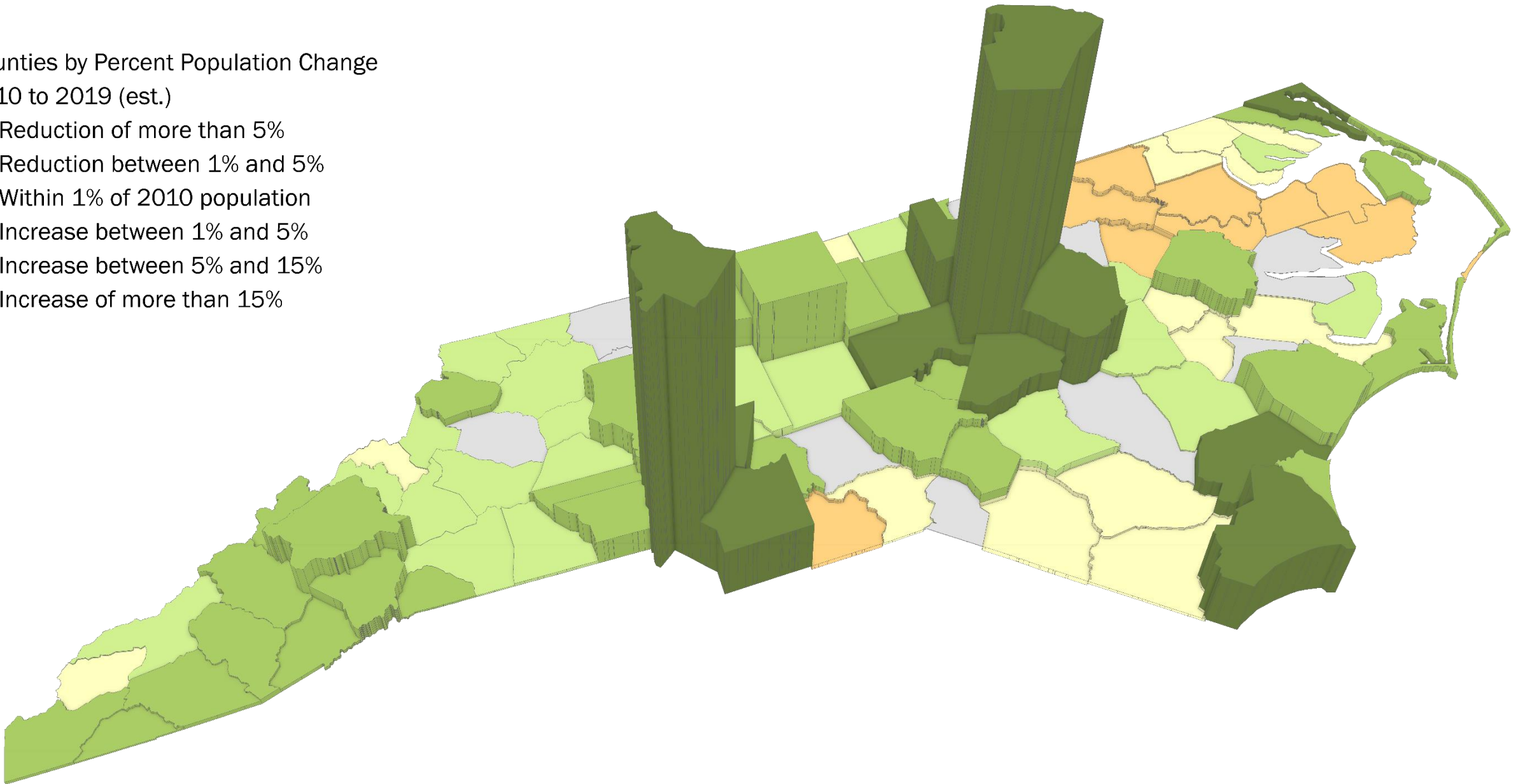
Counties by Percent Population Change
2010 to 2019 (est.)

- Reduction of more than 5%
- Reduction between 1% and 5%
- Within 1% of 2010 population
- Increase between 1% and 5%
- Increase between 5% and 15%
- Increase of more than 15%

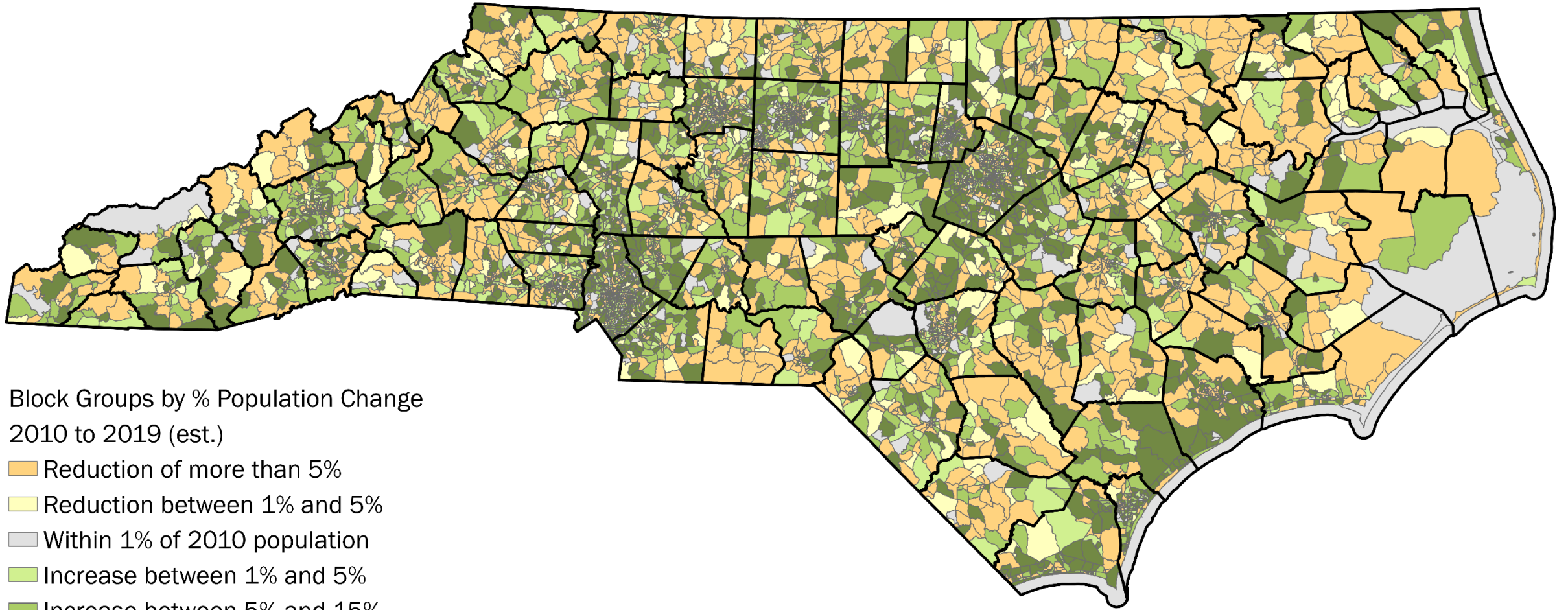


Counties by Percent Population Change
2010 to 2019 (est.)

- Reduction of more than 5%
- Reduction between 1% and 5%
- Within 1% of 2010 population
- Increase between 1% and 5%
- Increase between 5% and 15%
- Increase of more than 15%



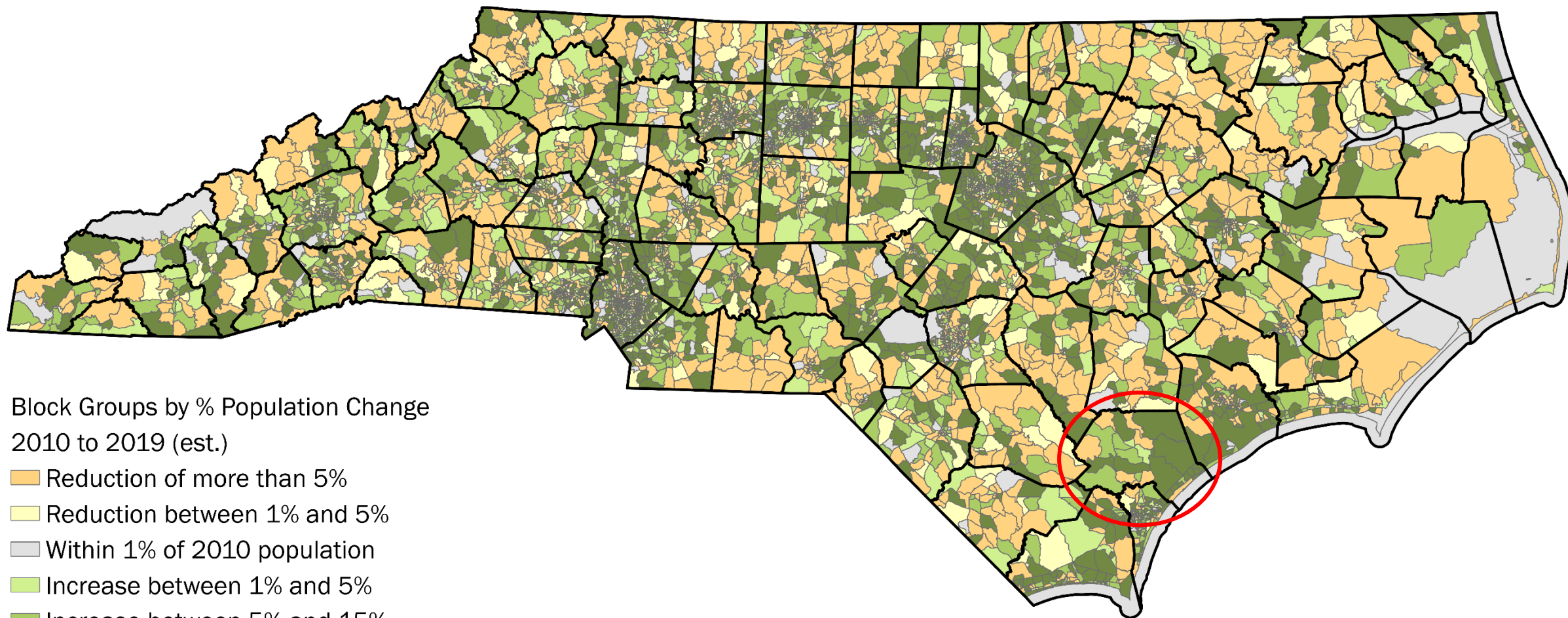
Source: 2010 US Census and NC OSBM 2019 County Estimates



Block Groups by % Population Change
2010 to 2019 (est.)

- Reduction of more than 5%
- Reduction between 1% and 5%
- Within 1% of 2010 population
- Increase between 1% and 5%
- Increase between 5% and 15%
- Increase of more than 15%

Source: 2010 US Census and ACS 2015-2019 5-Year Estimates



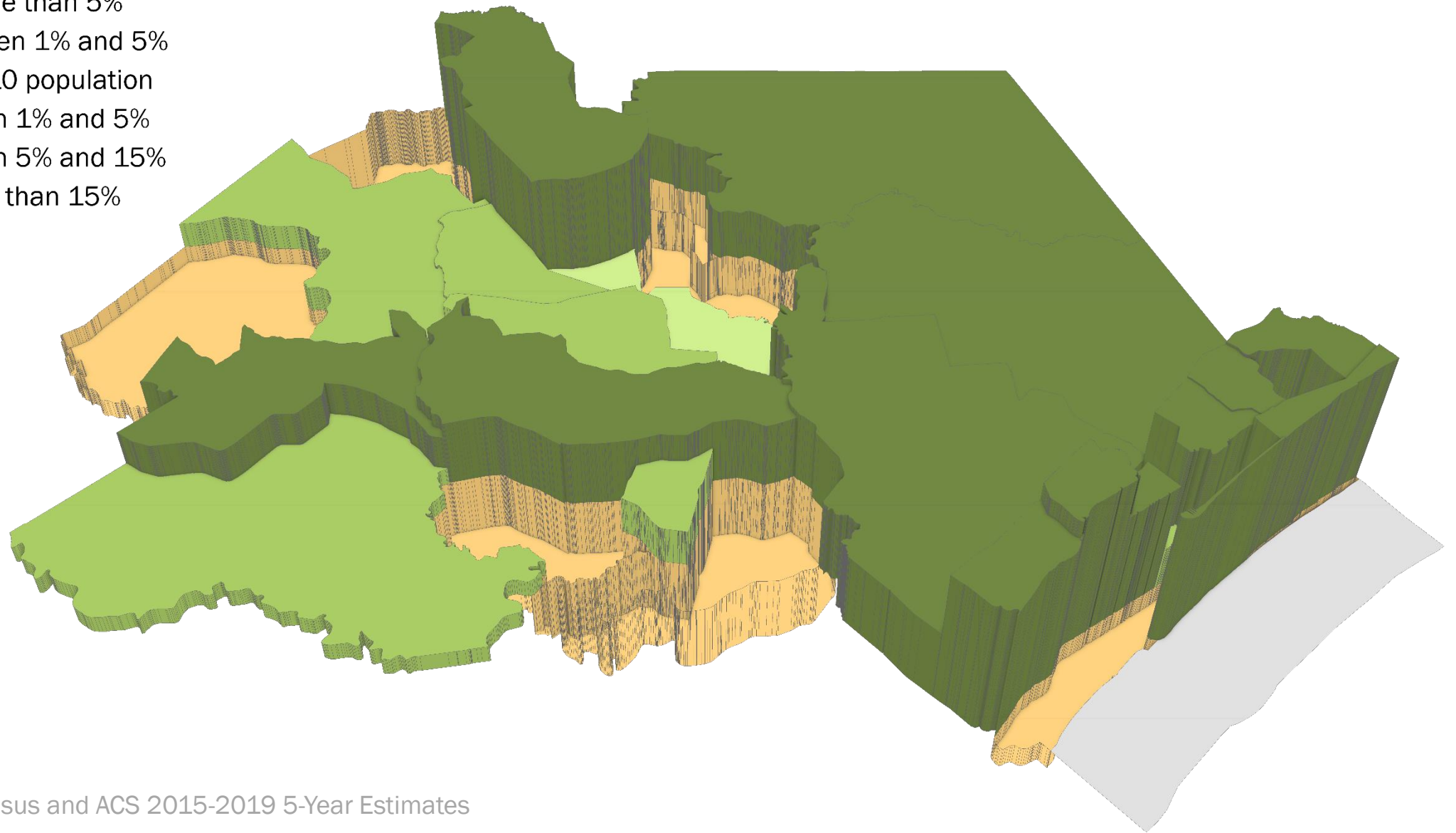
Block Groups by % Population Change
2010 to 2019 (est.)

- Orange Reduction of more than 5%
- Light Yellow Reduction between 1% and 5%
- Grey Within 1% of 2010 population
- Light Green Increase between 1% and 5%
- Medium Green Increase between 5% and 15%
- Dark Green Increase of more than 15%

Block Groups by % Population Change

2010 to 2019 (est.)

- Reduction of more than 5%
- Reduction between 1% and 5%
- Within 1% of 2010 population
- Increase between 1% and 5%
- Increase between 5% and 15%
- Increase of more than 15%



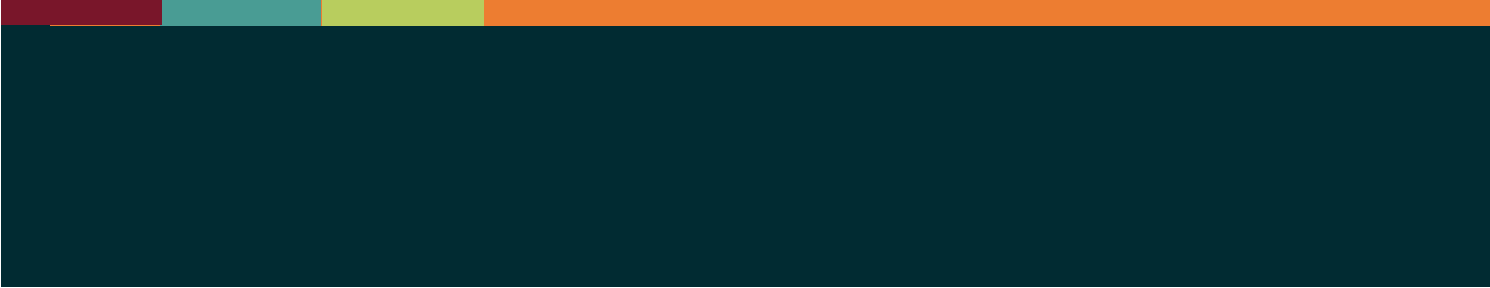
Source: 2010 US Census and ACS 2015-2019 5-Year Estimates



Redistricting

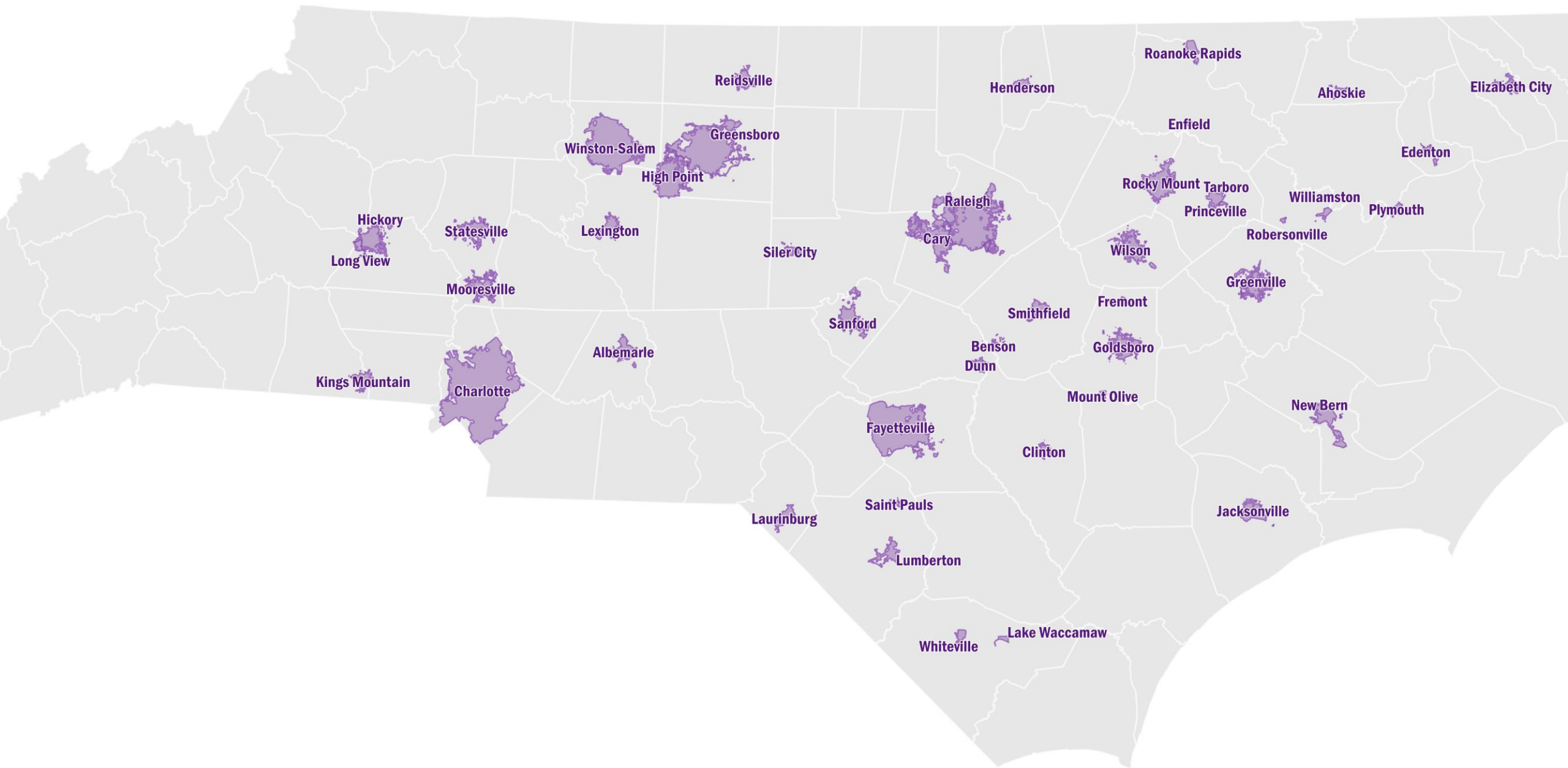
Does your municipality need to redistrict?

- Does your jurisdiction use true election districts?
- Are you within the permissible deviation range?
- 2 rules:
 - 10% and +/- 5% rule



Municipalities Using True Election Districts

Ahoskie	Enfield	Jacksonville	New Bern	Sanford
Albemarle	Fayetteville	Kings Mountain	Plymouth	Siler City
Benson	Fremont	Lake Waccamaw	Princeville	Smithfield
Cary	Goldsboro	Laurinburg	Raleigh	Statesville
Charlotte	Greensboro	Lexington	Reidsville	Tarboro
Clinton	Greenville	Longview	Roanoke Rapids	Whiteville
Dunn	Henderson	Lumberton	Robersonville	Williamston
Edenton	Hickory	Mooresville	Rocky Mount	Wilson
Elizabeth City	High Point	Mount Olive	St. Pauls	Winston-Salem

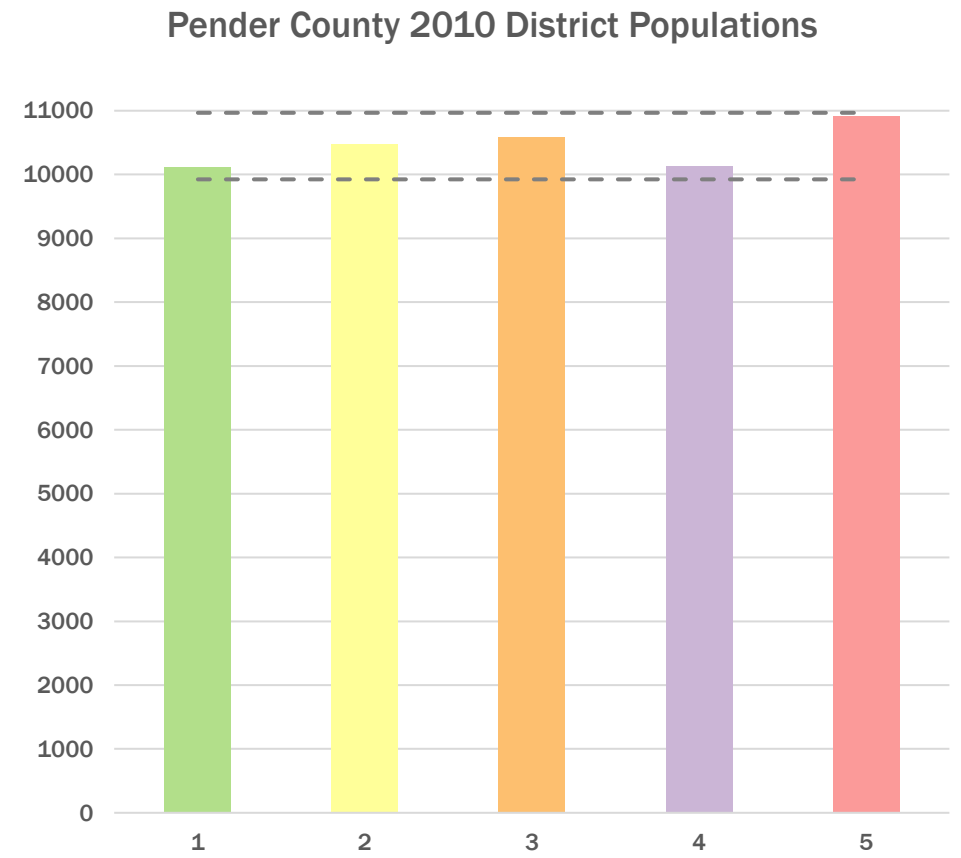
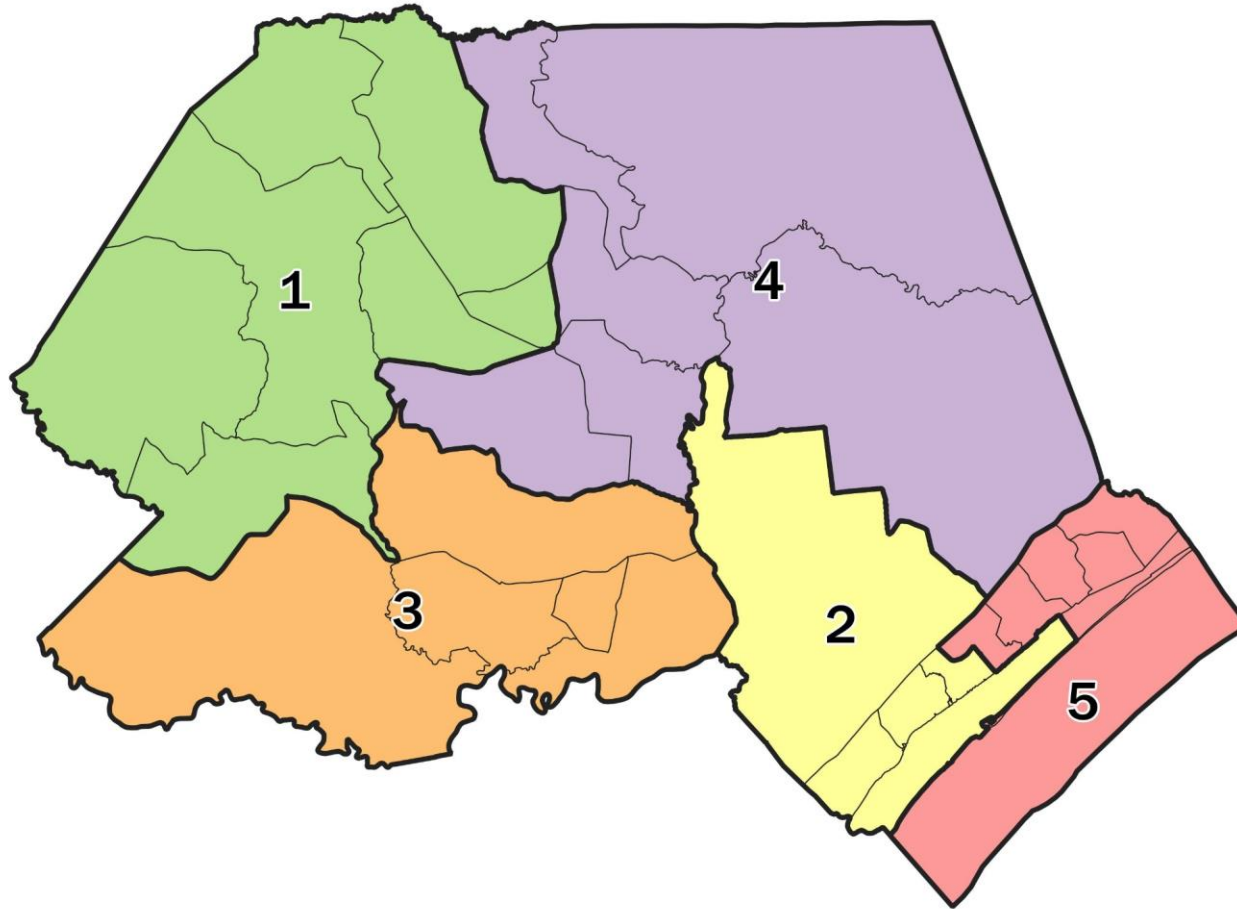


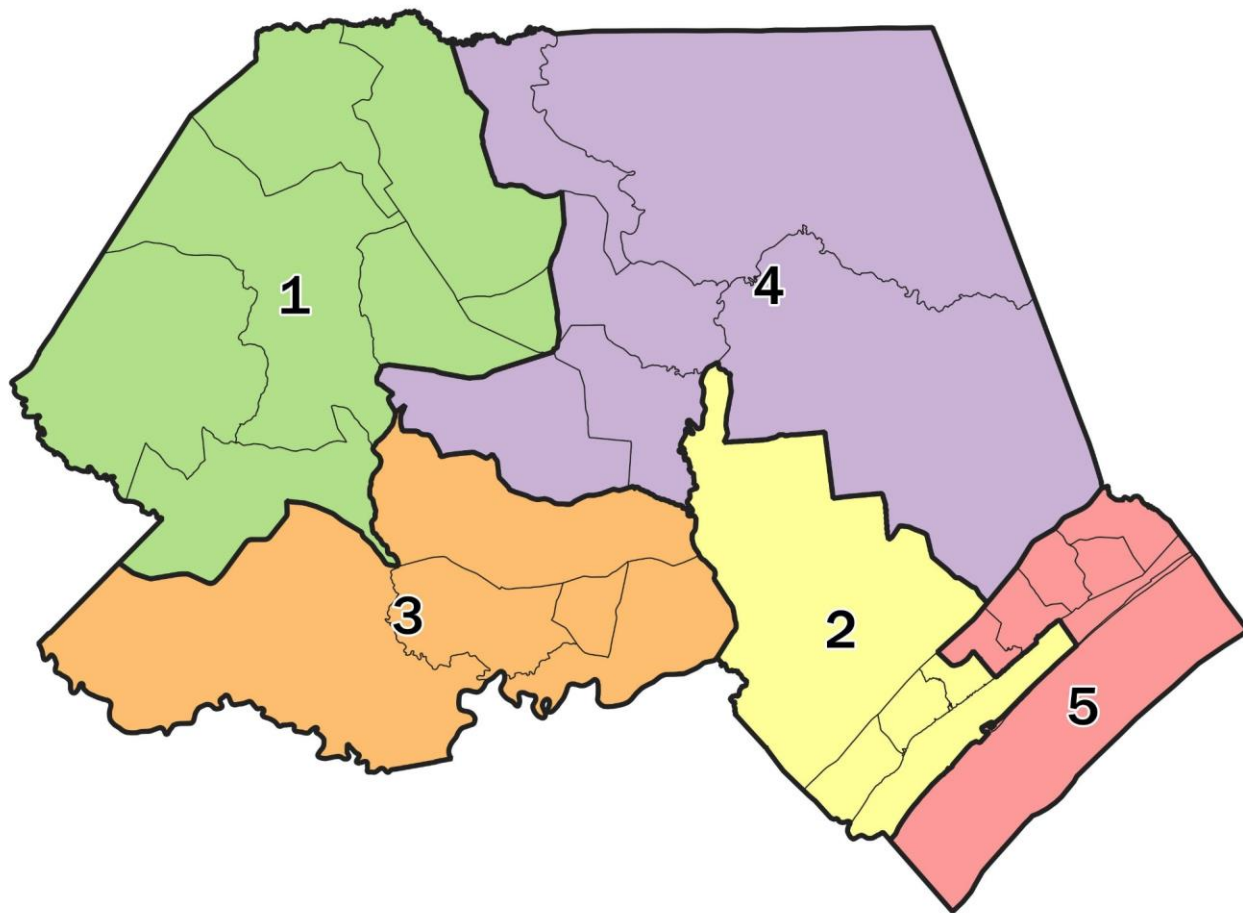
Block Groups by % Population Change
2010 to 2019 (est.)

- Reduction of more than 5%
- Reduction between 1% and 5%
- Within 1% of 2010 population
- Increase between 1% and 5%
- Increase between 5% and 15%
- Increase of more than 15%

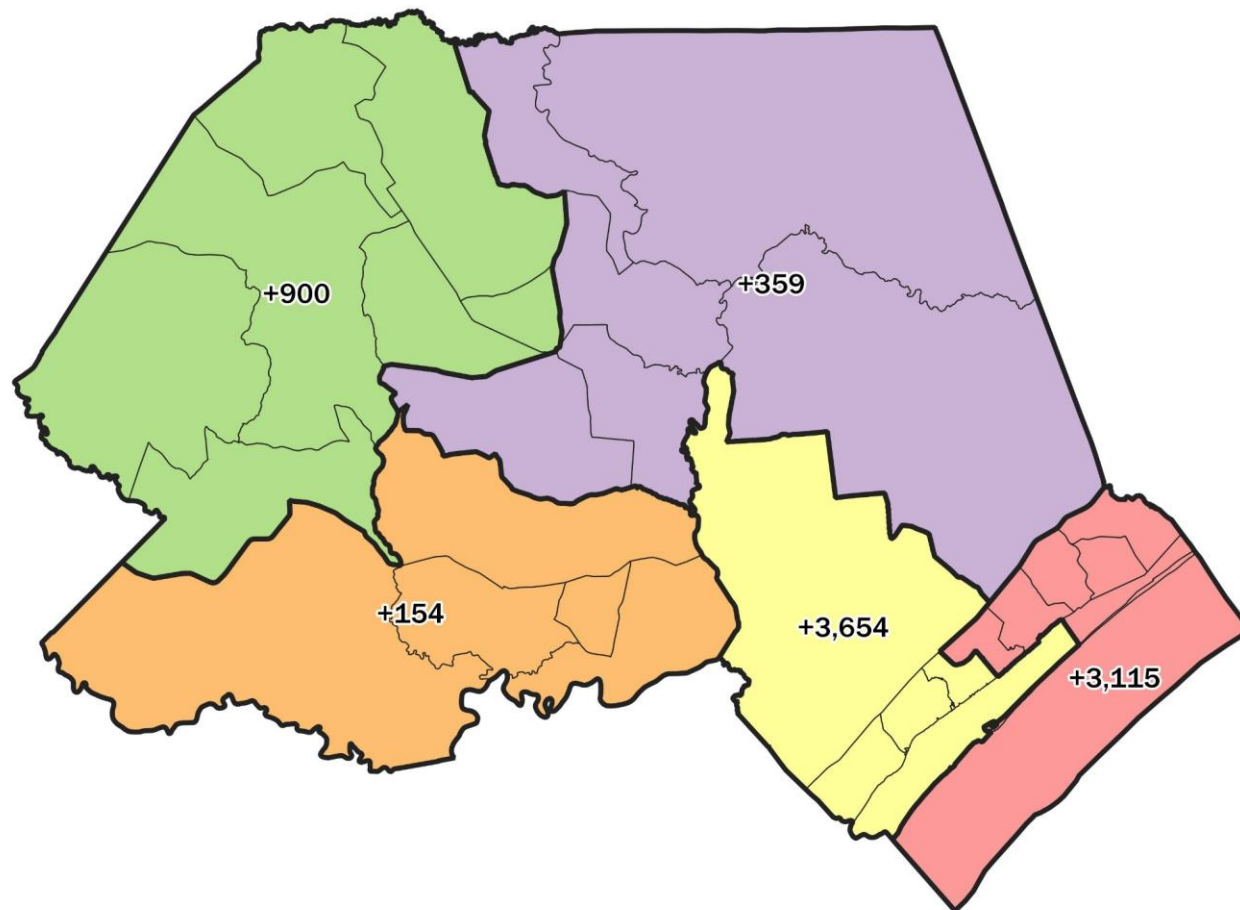


Source: 2010 US Census and ACS 2015-2019 5-Year Estimates

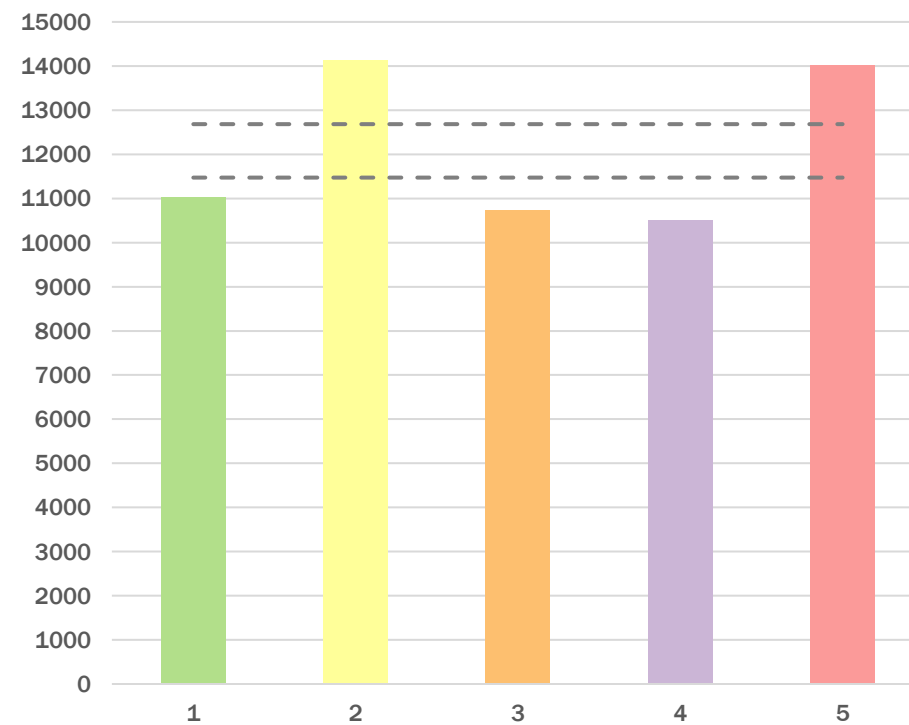




Now, using population estimates from
the end of the decade...



Pender County 2019 District Population Estimates



How long does the process take?

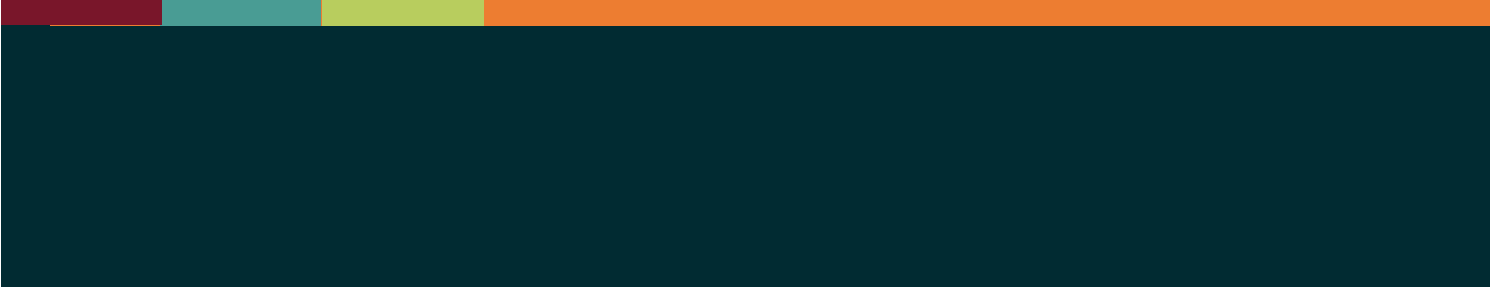
- Plan for a several month process, with 3-4 public meetings
- It depends on several factors, including but not limited to:
 - Your regular meeting schedule
 - Your willingness to call special meetings
 - Whether you staff the process in-house vs. hire a consultant
 - Whether your jurisdiction coordinates with another jurisdiction
 - The number of draft plans you request
 - The type and amount of public input you receive



Redistricting

General Process

1. Decide your guiding criteria
2. Public input on criteria?
3. Consultant/demographer draws plans
4. Legal review
5. Public hearing/input
6. Revise maps
7. Repeat steps 3-6 as needed
8. Formal adoption



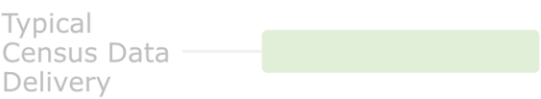
Census 2020 and Timing

Typical Timeline



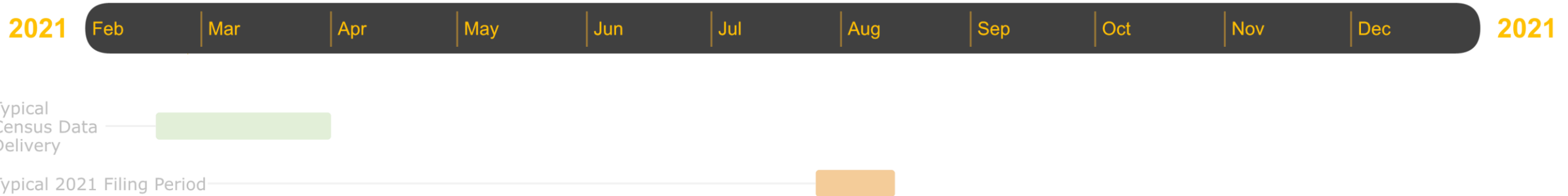
Note: Representations of dates should be taken as approximations.

Typical Timeline



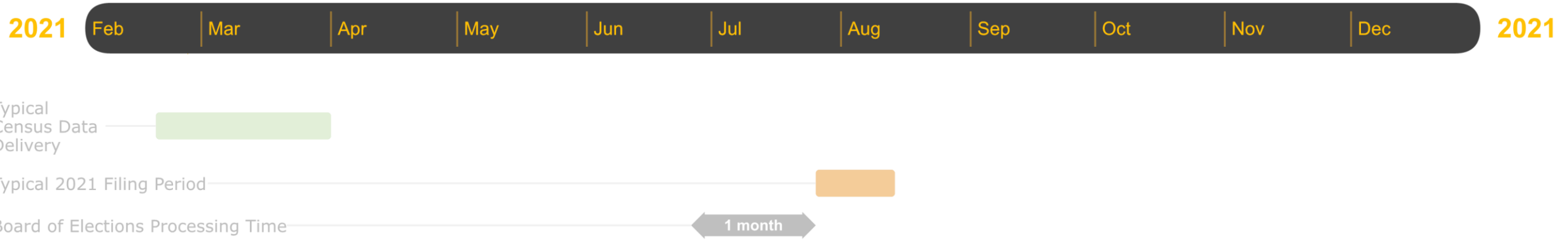
Note: Representations of dates should be taken as approximations.

Typical Timeline



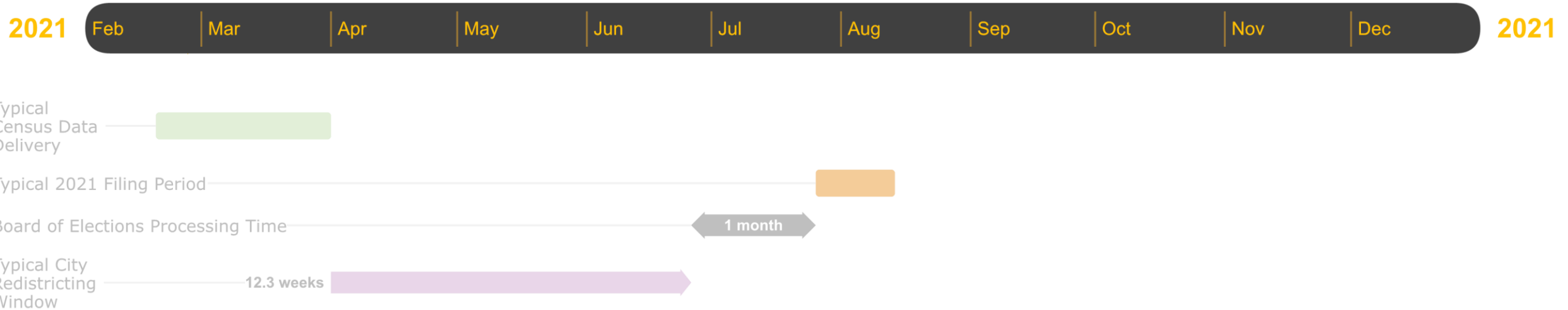
Note: Representations of dates should be taken as approximations.

Typical Timeline



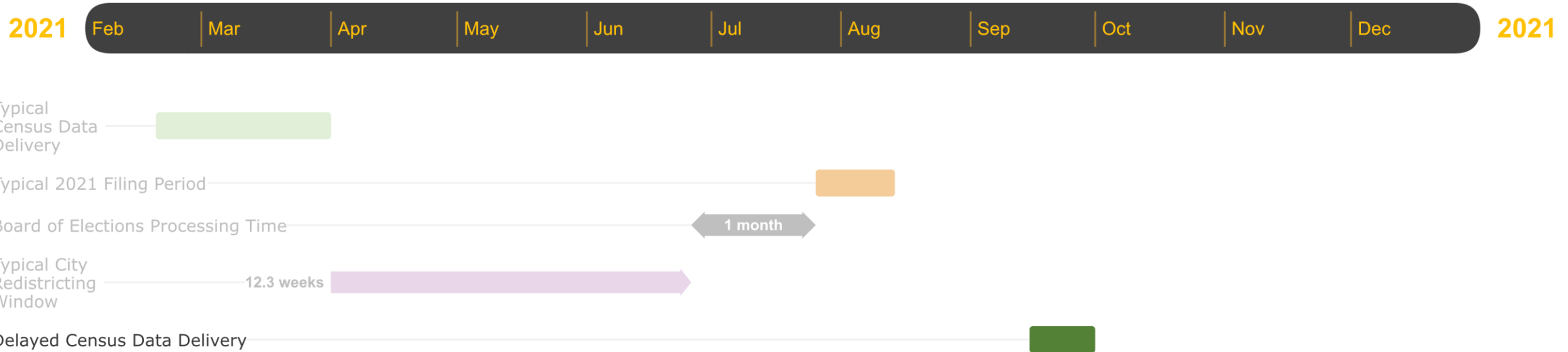
Note: Representations of dates should be taken as approximations.

Typical Timeline



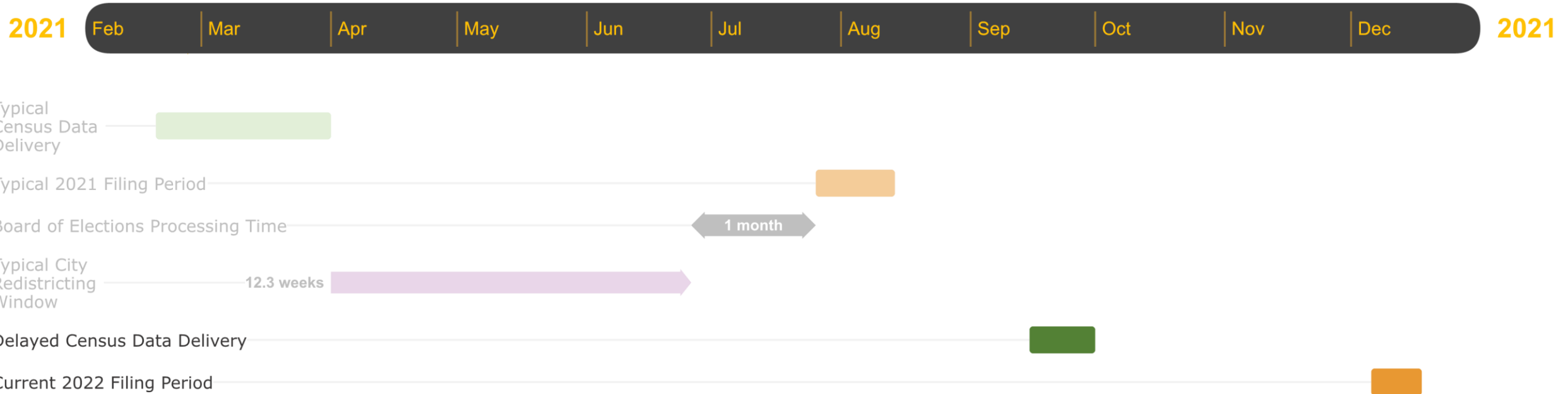
Note: Representations of dates should be taken as approximations.

Contingency A



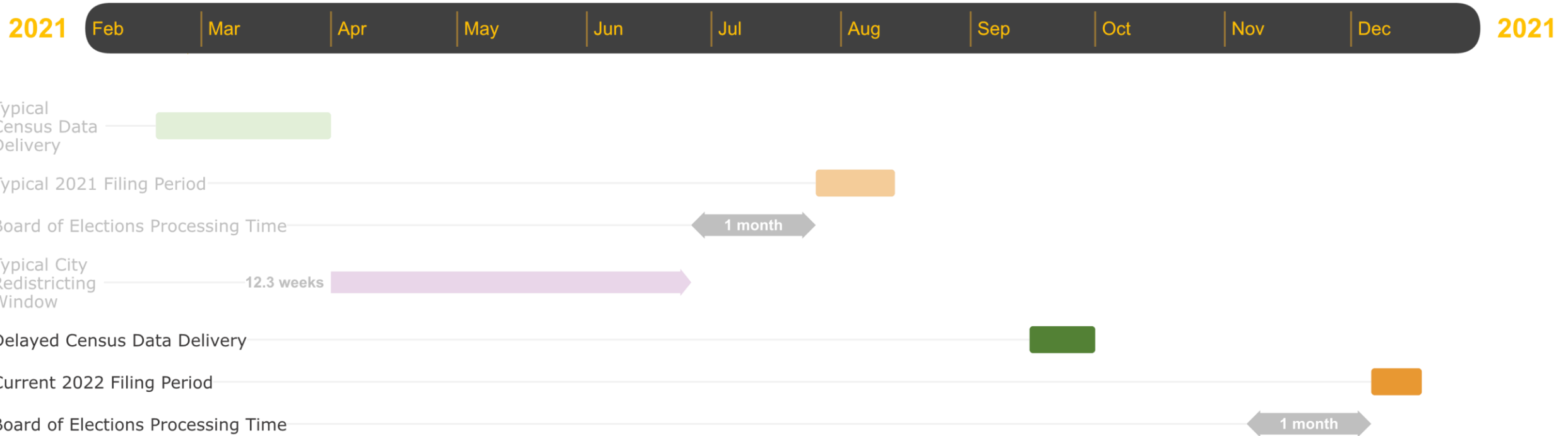
Note: Representations of dates should be taken as approximations.

Contingency A



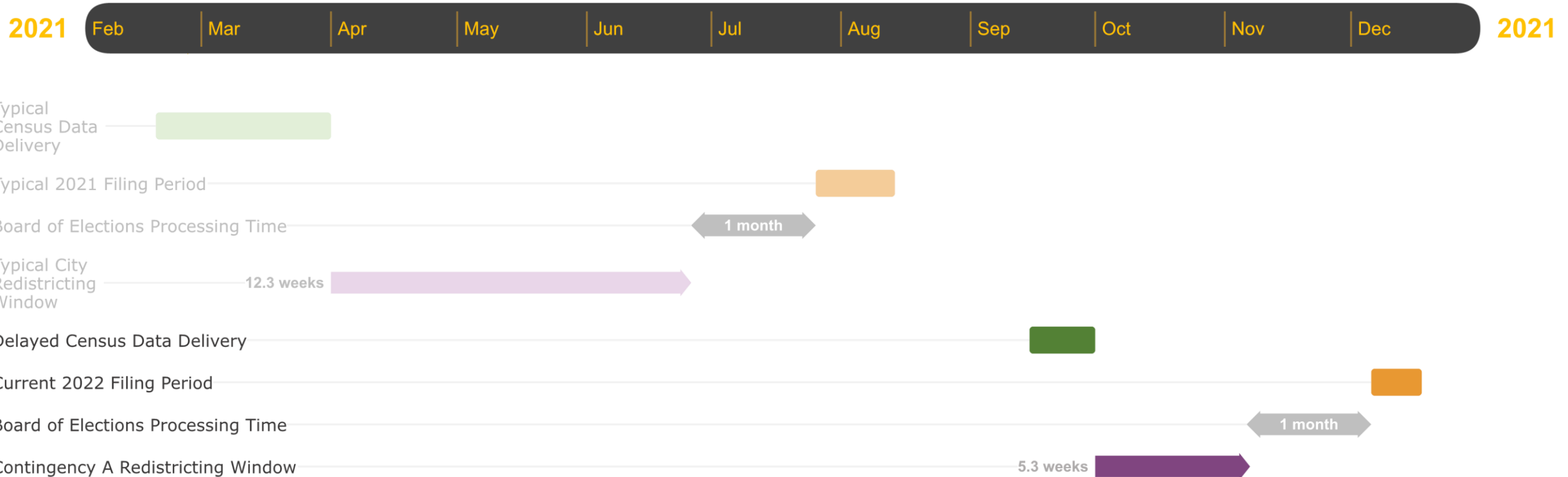
Note: Representations of dates should be taken as approximations.

Contingency A



Note: Representations of dates should be taken as approximations.

Contingency A



Note: Representations of dates should be taken as approximations.

Second contingency scenario

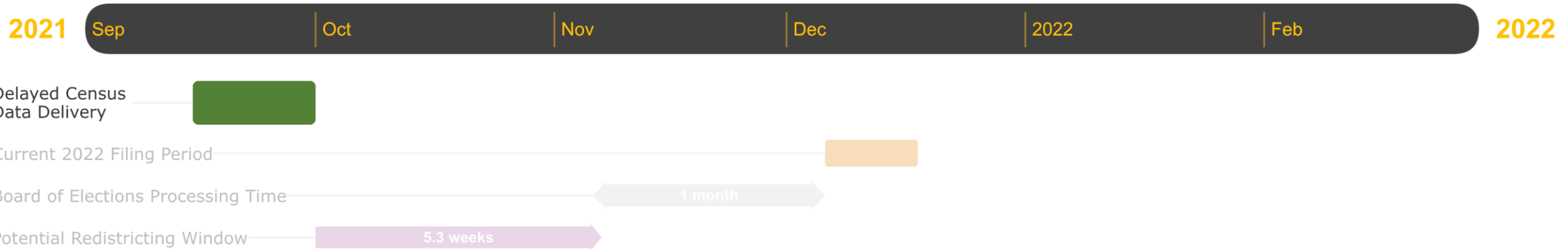
(note change in timeline duration/scale)

Contingency B



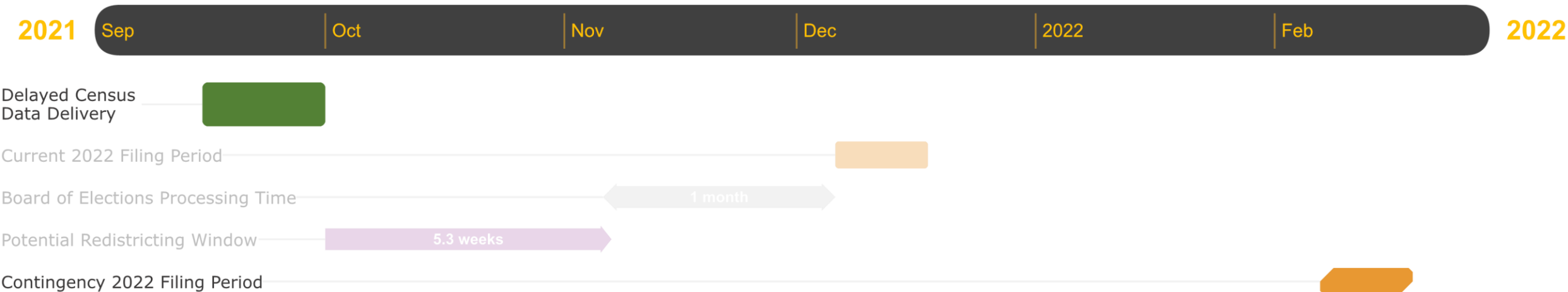
Note: Representations of dates should be taken as approximations.

Contingency B



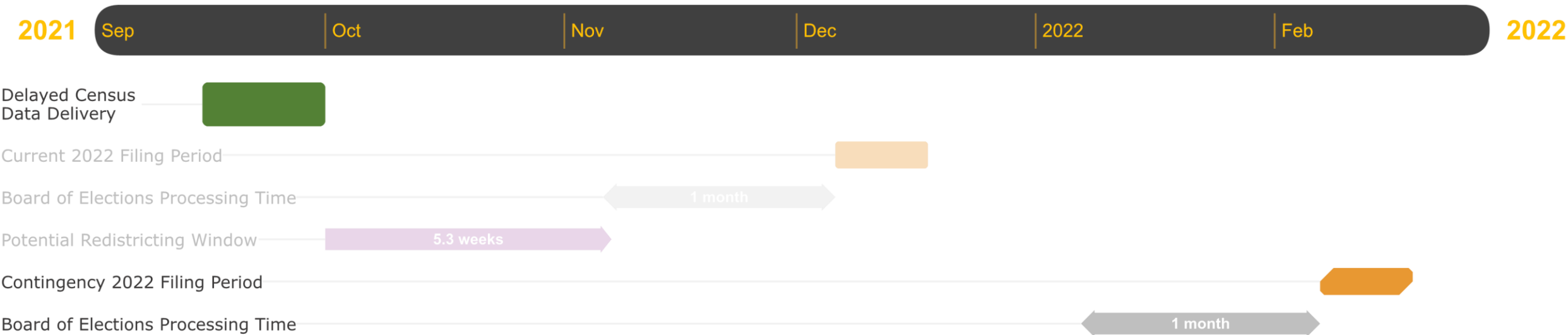
Note: Representations of dates should be taken as approximations.

Contingency B



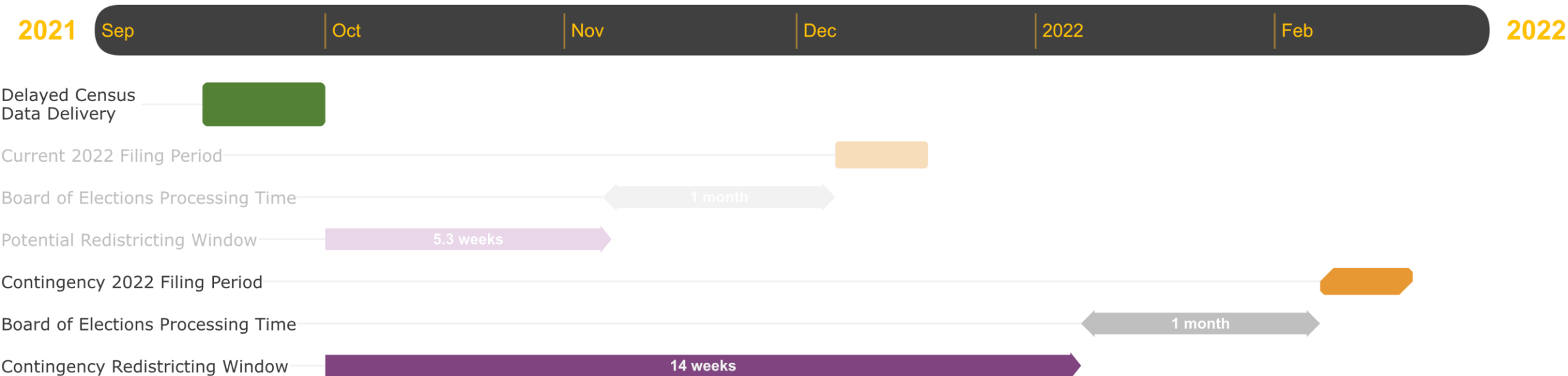
Note: Representations of dates should be taken as approximations.

Contingency B

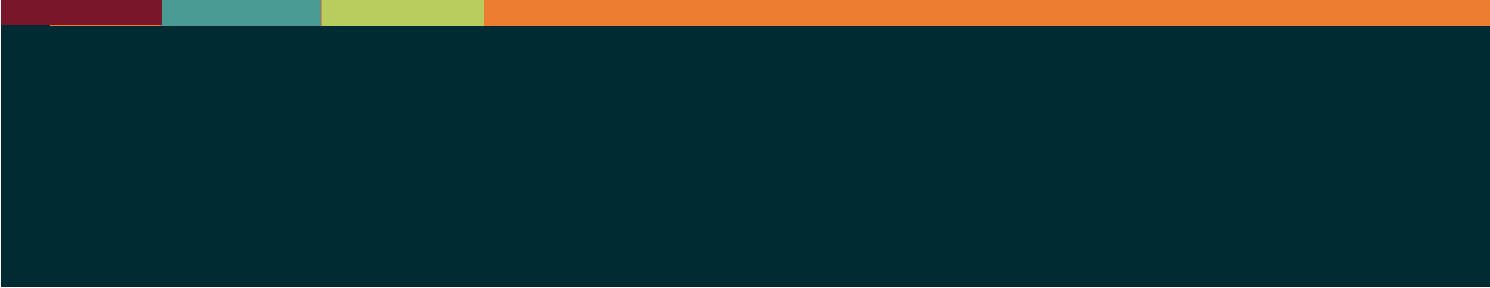


Note: Representations of dates should be taken as approximations.

Contingency B



Note: Representations of dates should be taken as approximations.



Existing Statutory Remedies and Possible Legislative Changes



In a typical year...

§ 160A-23.1. Special rules for redistricting after a federal decennial census.

- (a) As soon as possible after receipt of federal decennial census information**, the council of any city which elects the members of its governing board on a district basis, or where candidates for such office must reside in a district in order to run, shall evaluate the existing district boundaries to determine **whether it would be lawful to hold the next election without revising districts to correct population imbalances.**

If the council determines that it most likely will not be possible to adopt the changes (and obtain federal approval, if necessary) before the third business day before opening of the filing period, and determines further that the population imbalances are so significant that it would not be lawful to hold the next election using the current electoral districts, it may adopt a resolution delaying the election so that it will be held on the timetable provided by subsection (d) of this section. Before adopting such a resolution, the council shall hold a public hearing on it.

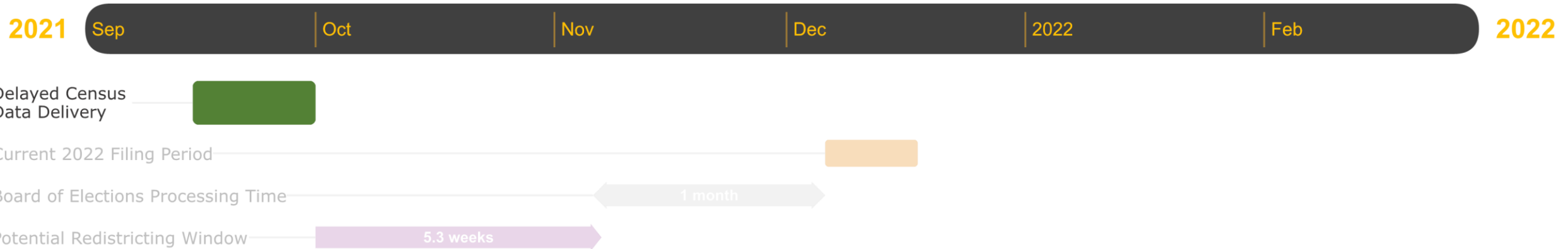


In a typical year...

§ 160A-23.1. Special rules for redistricting after a federal decennial census.

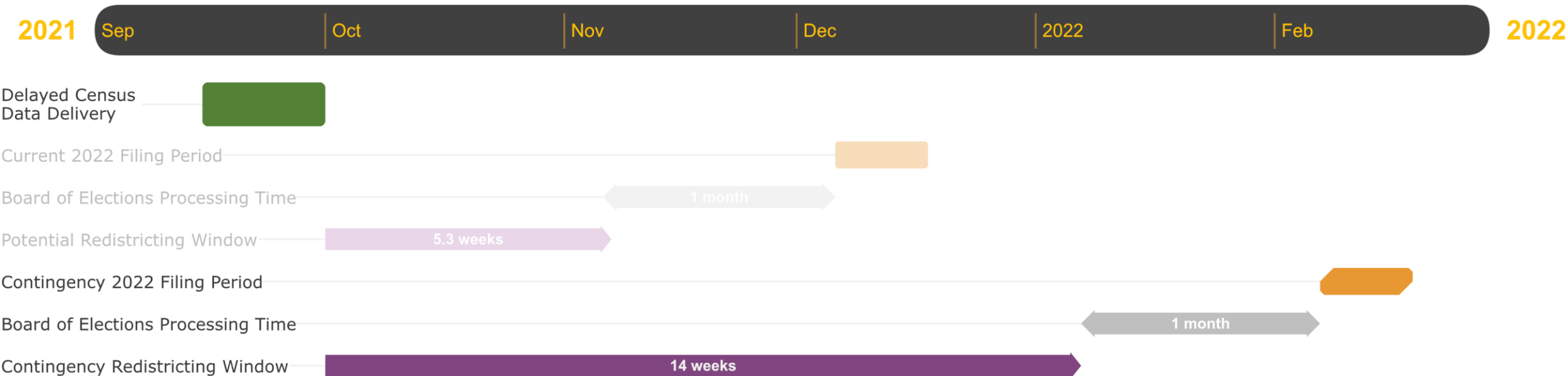
- c) If the resolution provided for in subsection (a) of this section is not adopted and: (1) Proposed changes to the electoral districts are not adopted, or (2) Such changes are adopted, but approval under the Voting Rights Act of 1965, as amended, is required, and notice of such approval is not received, by the end of the third business day before the opening of the filing period, **the election shall be held on the regular schedule using the current electoral districts.**

Contingency A



Note: Representations of dates should be taken as approximations.

Contingency B



Note: Representations of dates should be taken as approximations.

Providing
accurate data



Safeguarding
individual privacy

Data	Quality	Bnae	Kegouqe
Dada	Qualitg	Vrkk	Jzcfdy
Data	Qaality	Dncb	PrhvBln
Dzte	Qvality	Dncb	Prtnavy
Dfha	Quapyti	Tgta	Ppijacy
Tgta	Qucjity	Dfha	Pnjvico
Dncb	Qhulitn	Dzhe	Njivaci
Ntue	Quevdto	Dzte	Privacy
Vrkk	Zuhnvyry	Dada	Privacg
Bnaq	Denorbe	Data	Privacy



Questions?

- Caroline Mackie, cmackie@poynerspruill.com
 - Blake Esselstyn, blake@mapfigure.com
 - Local Redistricting Service, LRS@ncredistrict.com
www.ncredistrict.org/lrs
-