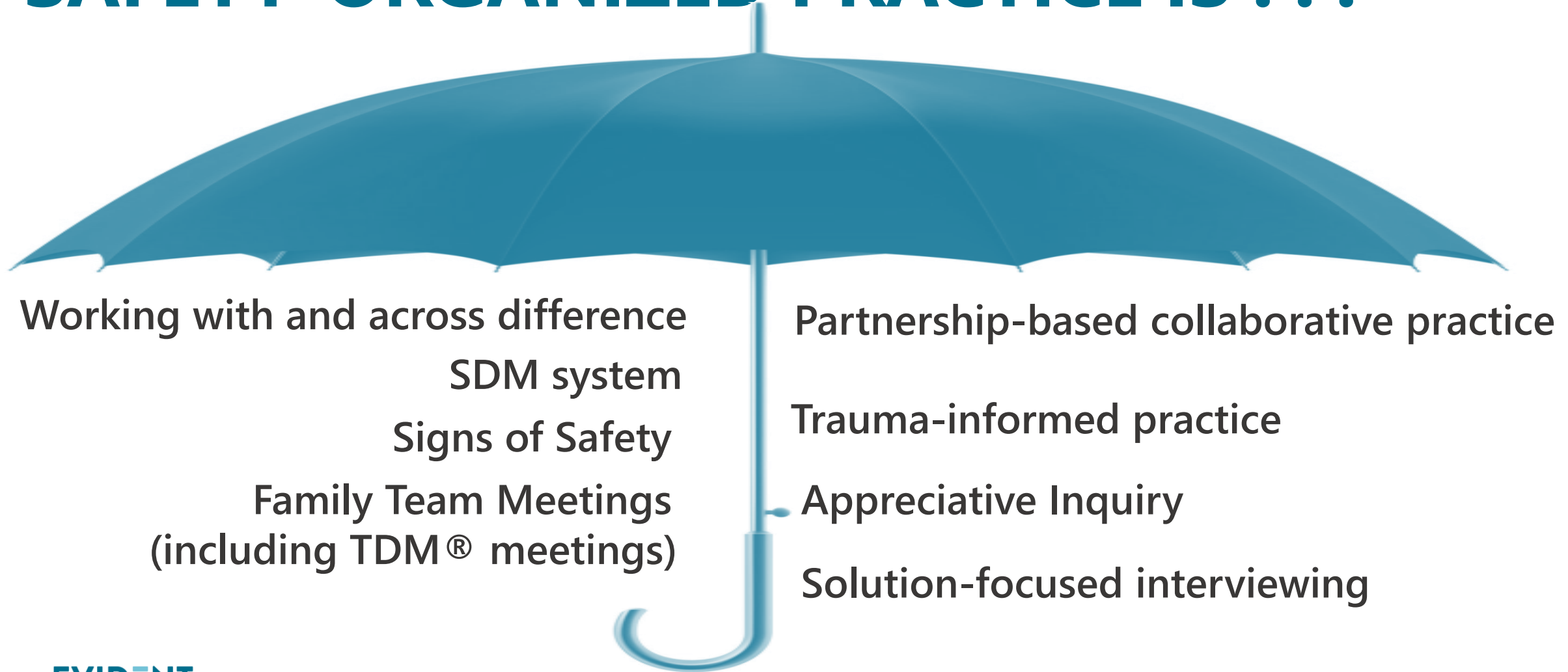




# SAFETY ORGANIZED PRACTICE (SOP)

**BRIEF COURT OVERVIEW**

# SAFETY-ORGANIZED PRACTICE IS . . .



Working with and across difference

SDM system

Signs of Safety

Family Team Meetings  
(including TDM® meetings)

Partnership-based collaborative practice

Trauma-informed practice

Appreciative Inquiry

Solution-focused interviewing

# SAFETY-ORGANIZED PRACTICE OBJECTIVES



Development of good working relationships



Use of critical thinking and decision-support tools



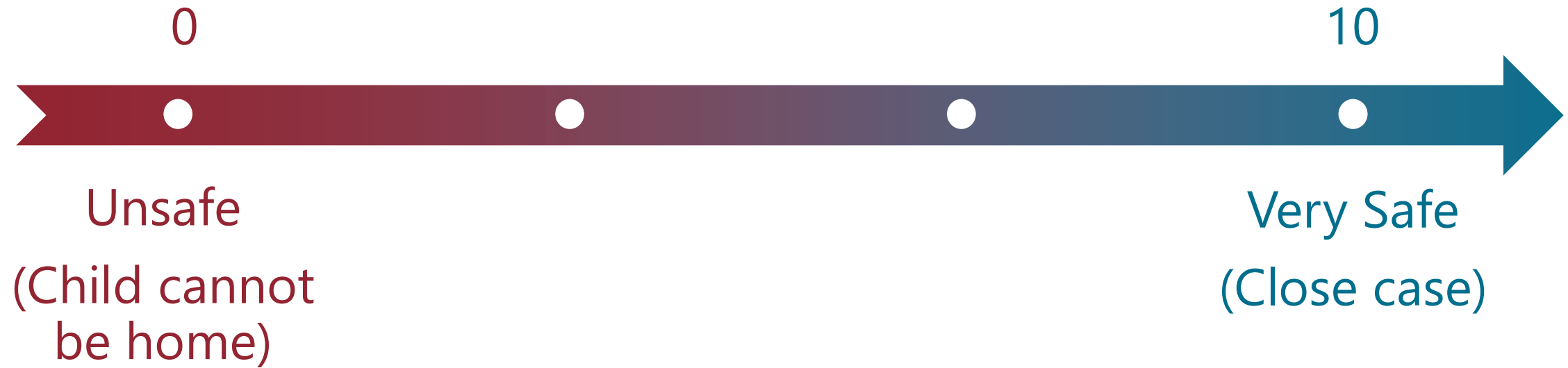
Building collaborative plans to enhance daily child safety

# THE THREE QUESTIONS

- What are we **worried** about?
- What is **working** well?
- What needs to happen?



Three-Column Mapping		
What are we worried about?	What is working well?	What needs to happen next?



# DISCOVERABLE TOOLS FOR ENGAGING CHILDREN

**The Three Houses:**  
Child's voice in  
assessment

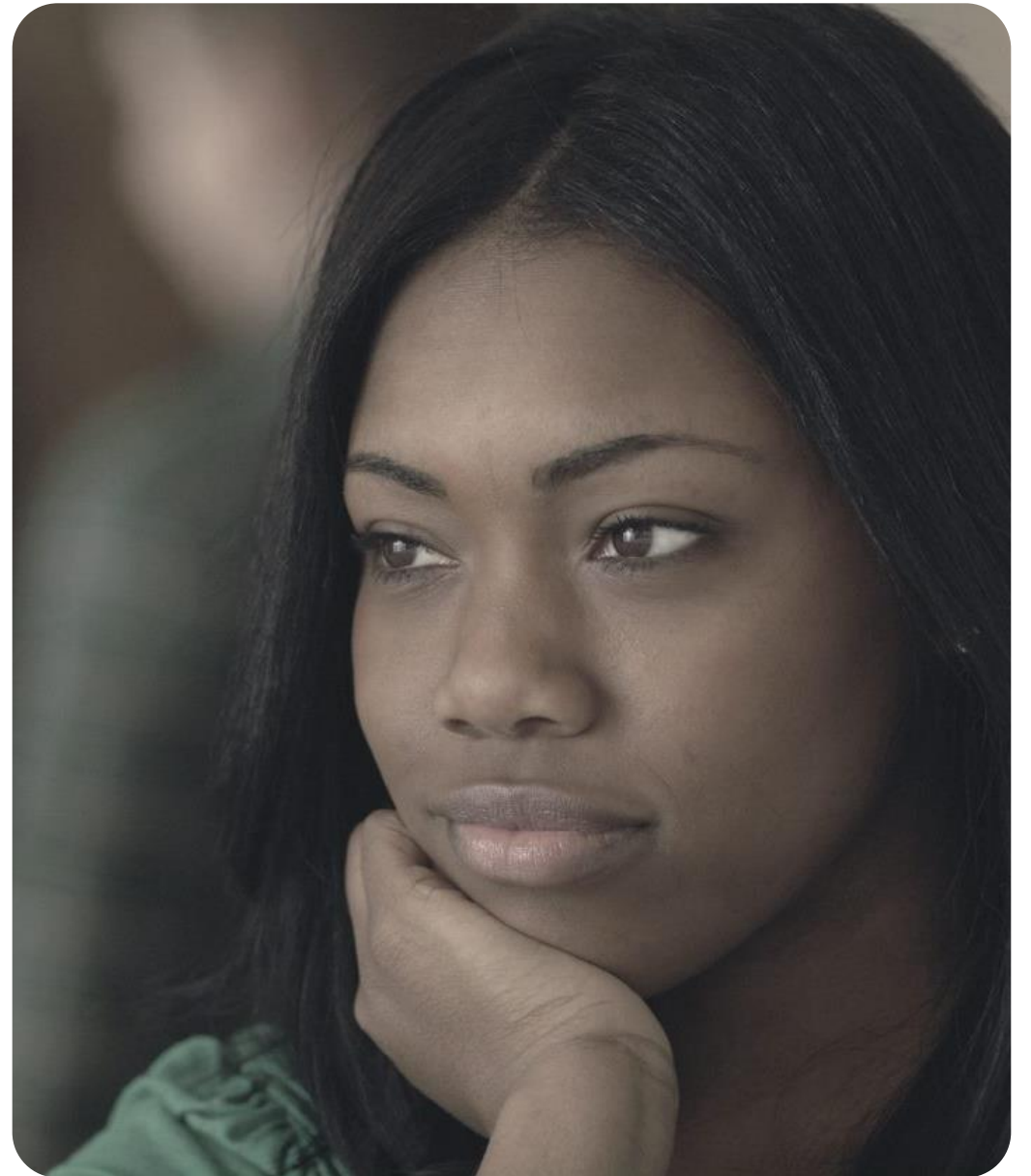
**The Safety House:**  
Child's voice in planning





# CRITICAL THINKING

- Collaborative Assessment and Planning (CAP) framework
- Structured Decision Making® (SDM) assessments
- Harm and Worry statements



# HARM / WORRY / GOAL STATEMENTS

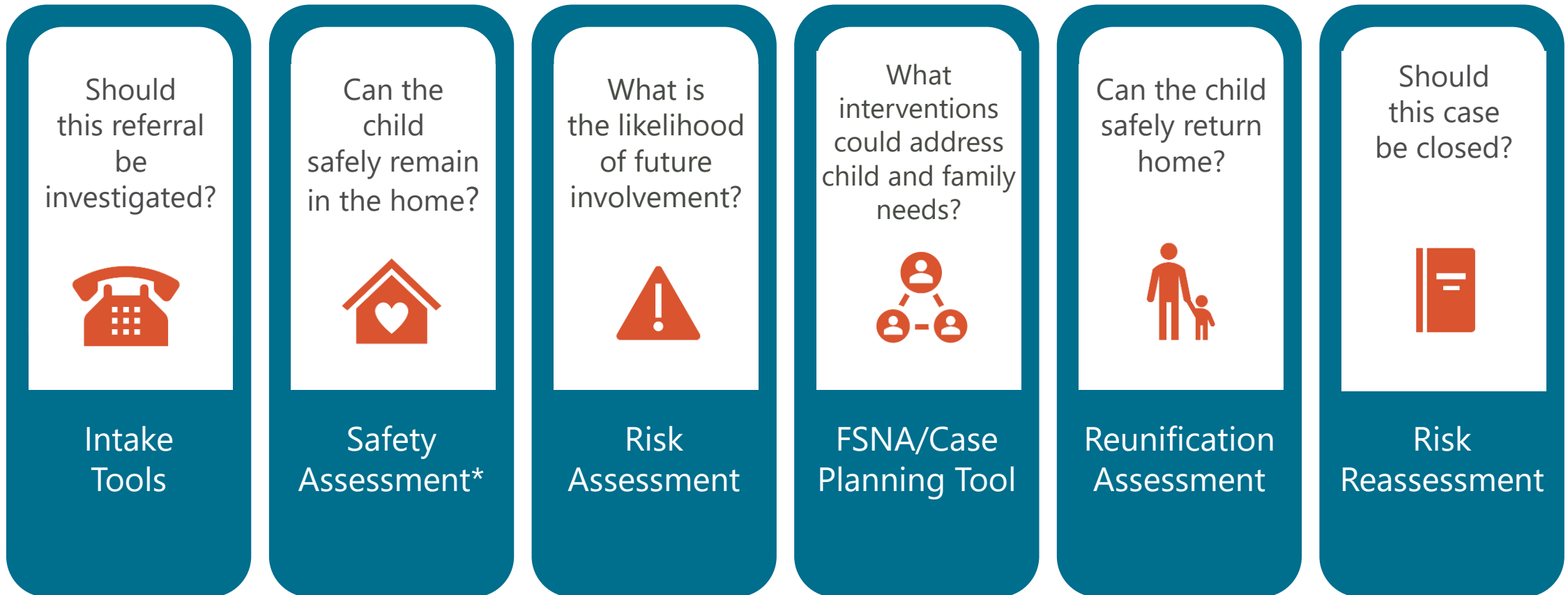
	WHO	WHAT	HOW
<u>Harm</u> :	Caregiver	Caregiver actions/ Inactions	Impact on the child
<u>Worry</u> :	Caregiver	Potential actions/ Inactions	Potential impact on the child
<u>Goal</u> :	Is part of the network	Will the caregiver DO differently	For HOW long



What Are We Worried About?	Purpose of Consultation Hopes for this conversation	What Is Going Well?
<b>Harm and Danger</b> <ul style="list-style-type: none"><li>Caregiver behavior; impact on child</li><li>Youth behavior; impact on youth and others</li><li>Pattern/history</li></ul>	<b>Genogram, Ecomap, Circles of Safety and Support</b> People in the family and network who care about the child/family  <b>Cultural Considerations</b> How family identifies racially, ethnically, culturally  <b>SDM® System Guidance</b> Most recent safety and risk assessment results; current recommended decision	<b>Safety and Permanency/Belonging</b> <ul style="list-style-type: none"><li>Actions of protection, taken by the caregiver and network, that address the danger and are demonstrated over time</li><li>Actions of connection, taken by the caregiver and network and demonstrated over time, that promote enduring relationships to family, community, and culture</li></ul>
<b>Complicating Factors</b> <ul style="list-style-type: none"><li>Conditions or behaviors that create greater barriers to safety, permanency, well-being</li><li>Research-based risk factors</li></ul>	<b>Gray Areas</b> Incomplete or speculative information	<b>Strengths and Resources</b> <ul style="list-style-type: none"><li>Assets, resources, and capacities at the individual, family, and community levels</li><li>Presence of research-based protective factors</li></ul>
What Needs to Happen?		
<b>Worry Statements</b> What do key stakeholders worry will happen if nothing changes? Consider safety, permanency, and well-being.	<b>Goal Statements</b> What needs to be demonstrated, over time, to address the concerns and ensure the child is safe, well, and connected to family, community, and culture? (Bottom lines, not services)	
<b>Action Steps</b> <ul style="list-style-type: none"><li>Look at the next SDM decision point. What information is needed? What conversations with the family and network need to happen?</li><li>What needs to happen next to work toward reaching goals?</li><li>Who has agreed to do what, when?</li><li>What kinds of plans are needed (safety plans, service plans, others)?</li></ul> <p>Refer to any recommended SDM assessment guidance.</p>		

Based on: Consultation and Information Sharing Framework (Lohrbach, 2000); Signs of Safety Assessment and Planning Framework (Turnell & Edwards, 1999; Department of Child Protection, 2011); The Massachusetts Safety Map (Chin, Decter, Madsen, & Vogel, 2010); and The Partnering for Safety Assessment and Planning Framework (Parker & Decter, 2012).

# SDM Assessments: Each Decision Point Relates to a Key Question



\*Safety is reassessed through the case

# SAFETY THREAT

# RISK



# STRONG NETWORK, STRONG PLAN

We cannot plan for safety only with the people we are worried about.

SOP has concrete strategies for identifying and engaging family networks.





# **FUTURE STATE: SAFETY ORGANIZED PRACTICE BENCH BOOK**

A customized SOP bench book includes hearing specific bench cards with guiding questions for court officers to ask.

Judge-to-Judge consults from other jurisdictions can be made available.

**EVIDENT  
CHANGE**



# WHAT MAY BE DIFFERENT FOR COURTS?

- Increased consistency, accuracy and equity in decision making.
- Increased transparency about the process for everyone.
- Increased efficiency and better alignment between agency and court processes when courts and attorneys actively encourage SOP efforts.
- Workers should be able to clearly articulate their assessments and recommendations in court reports and testimony.
- Court officers can make better informed decisions.
- Better outcomes for families!

# QUESTIONS

